

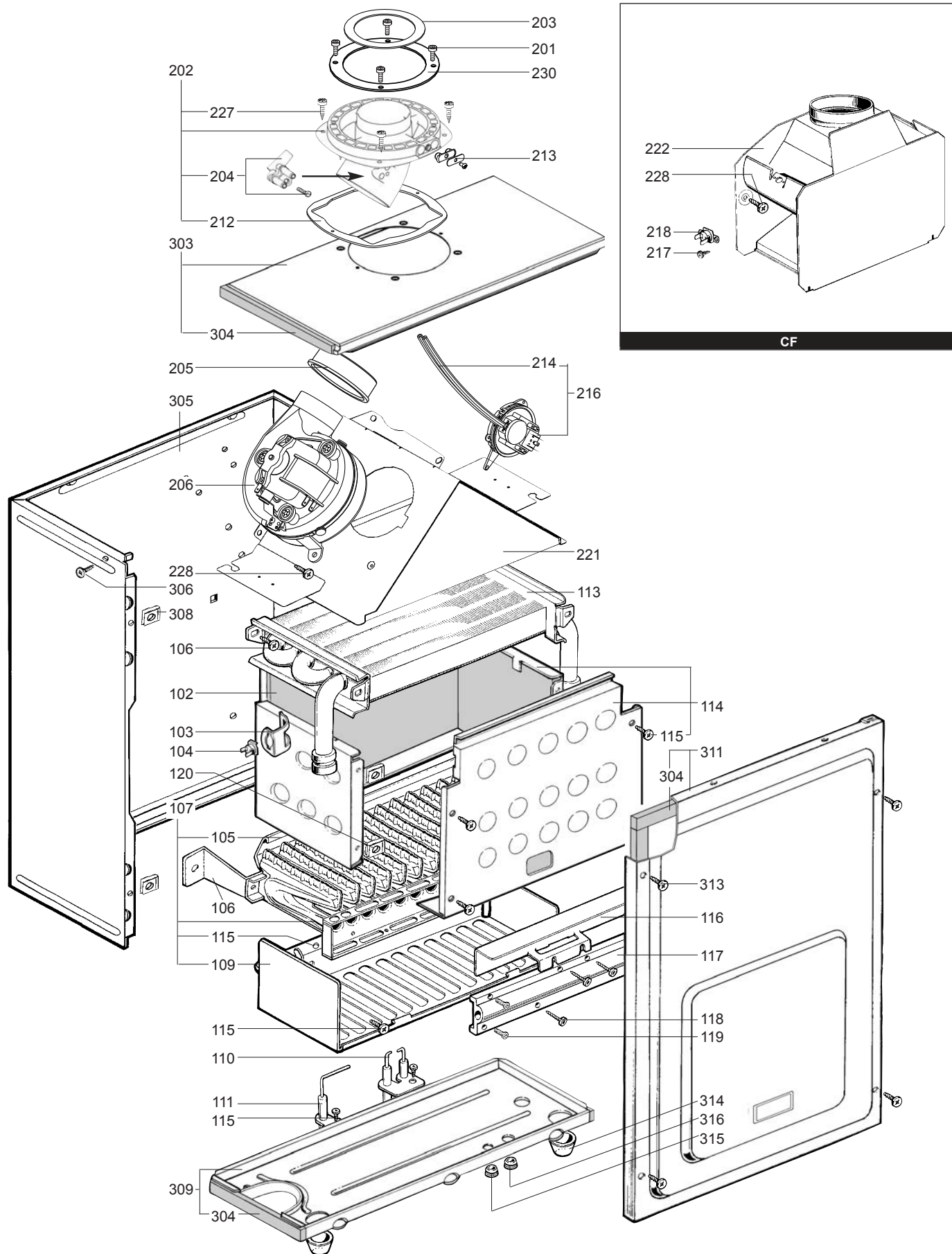
## SPARE PARTS EXPLODED VIEW GAS-WALL BOILER ATM. BURNER

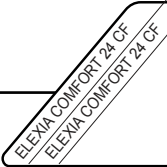

Model

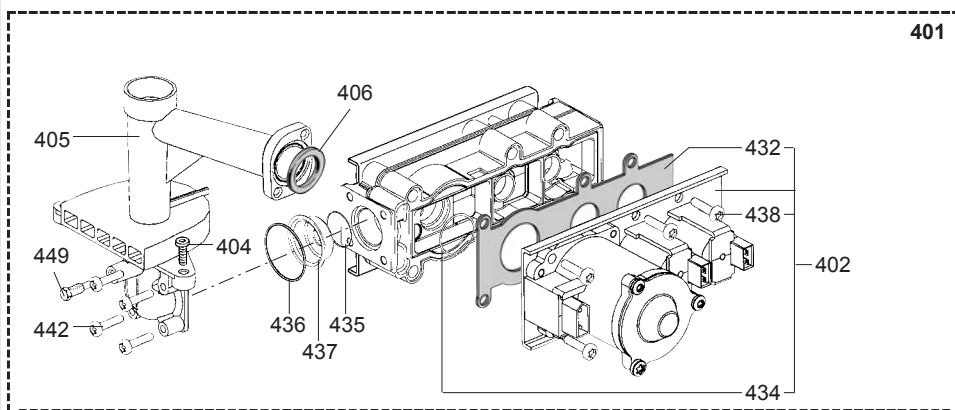
### **ELEXIA COMFORT**

R8202555-06 - 16/01/2014

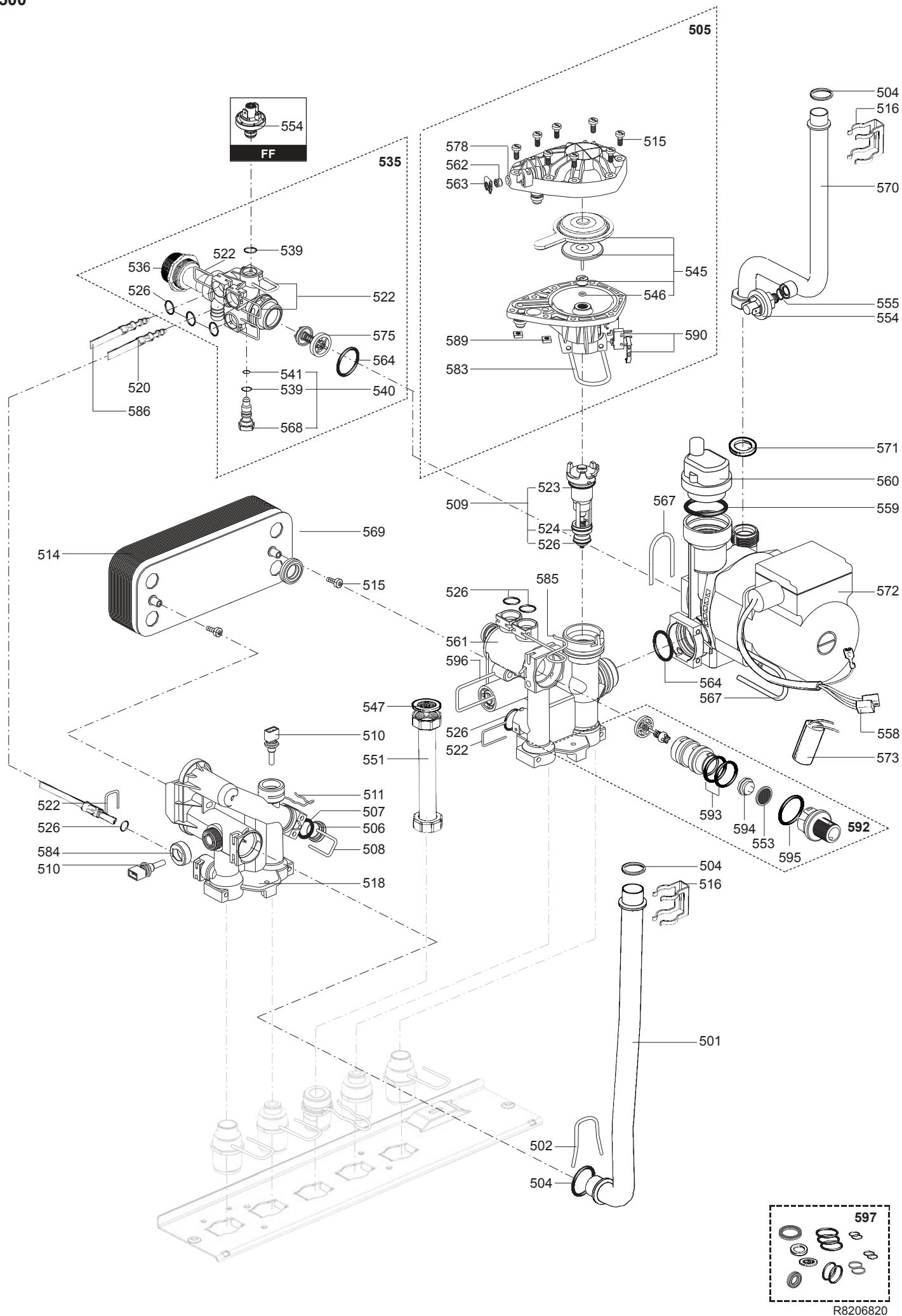
1	205406774031	ELEXIA COMFORT 24 CF N EU	10-2000	12-2007
1	205406774021	ELEXIA COMFORT 24 CF P EU	05-2001	01-2008
2	205406774037	ELEXIA COMFORT 24 FF N EU	10-2000	01-2008
2	205406774027	ELEXIA COMFORT 24 FF P EU	06-2001	12-2007
Col	Reference	Model type	Begin	End



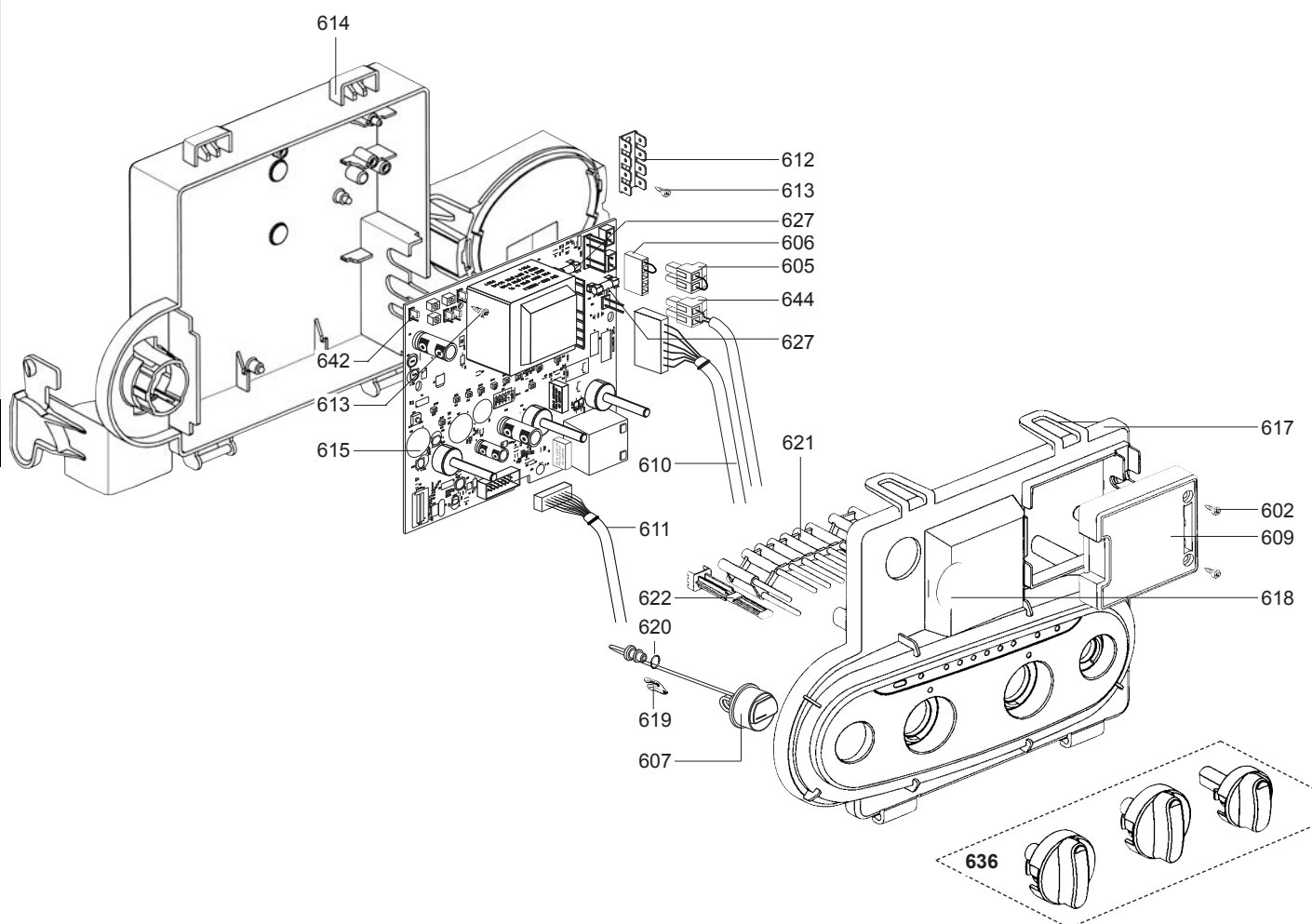
		<div><div>31</div></div>																					
	Description	Manf. Pt. N	Type	1	2	3	4	5	6	7	8	9	10	11	12	13	14	15	16	17	18	From	to
0100	BURNER ASSEMBLY																						
0102	COMBUSTION CHAMBER LINING KIT	60081722		•	•																		
0103	CLIP	61010050		•	•																		
0104	OVERHEAT THERMOSTAT 105C	61303566		•	•																		
0105	CROSS LIGHTING STRIP	61002811			•																		
	CROSS LIGHTING STRIP	61010038		•																			
0106	TAPPING SCREW CBLX D: 6.3-13	61010648		•	•																		
0107	BURNER HEAD	61010415		•																			
	BURNER HEAD	61010753			•																		
0109	DEFLECTOR	61303084		•																			
	GRILLE	61010223			•																		
0110	IGNITION ELECTRODE	61002801		•	•																		
0111	IONIZATION ELECTRODE	61002802		•	•																		
0113	HEAT EXCHANGER	61010017		•	•																		
0114	COMBUSTION CHAMBER ASSY	60081721		•	•																		
0115	TAPPING SCREW CBLX D: 4.2-9.5	61010125		•	•																		
0116	DEFLECTOR	61010392			•																		
0117	MANIFOLD 16 INJ.	61010175	B/P	•	•																		
	MANIFOLD 16 INJ.	61010030	NAT	•																			
	MANIFOLD 16 INJ.	61010341	NAT		•																		
0118	TAPPING SCREW CBLX D: 4.2-25	61010128		•	•																		
0119	SCREW HX M 5-12	61010131		•	•																		
0120	SPIRE CLIP	60057488		•	•																		
0200	FAN ASSEMBLY																						
0201	SCREW CLX M 5-20	61017600			•																		
0202	FLUE CONNECTION	60000735			•																11/04		
	FLUE CONNECTION	61306695			•																	10/04	
0203	RESTRICTOR D:61 KIT	60000736			•																	10/04	
	RESTRICTOR D:65 KIT	60000737			•																11/04		
0204	VENTURI	61310050			•																		
0205	GASKET	61303825			•																		
0206	FAN ASSY	61304720			•																		
0212	GASKET	61300262			•																		
0213	PLUG KIT	61306698			•																		
0214	SILICONE TUBE D: 9x3 L: 1.30M	60081265			•																		
0216	AIR PRESSURE SWITCH 87 Pa	61306697-01			•																		
0217	SHEET SCREW CBLX D: 3.5-6.5	61010126		•																			
0218	THERMOSTAT (SAFETY - 70C)	61012479		•																			
0221	HOOD	61304712			•																		
0222	DRAUGHT DIVERTER	61010117		•																			
0227	TAPPING SCREW CBLX D:4.2-12.5	61010847			•																		
0228	TAPPING SCREW CBLX D: 6.3-13	61010648		•	•																		
0230	GASKET (/ Flue bend turret)	61300258			•																		
0300	SEALED CASE																						
0303	TOP PANEL BOX	61305438			•																		
0304	FOAM SEAL 12.5x5 L: 2.5M	60081273			•																		
0305	CASE	61010106			•																		
0306	TAPPING SCREW CBLZ D: 4.2-13	60079486			•																		
0308	SPIRE CLIP	60057488			•																		
0309	BASE - BOX	61010588			•																		
0311	CASE COVER	60081851			•																		
0313	TAPPING SCREW CBLZ D: 4.2-19	61003114			•																		
0314	GROMMET	61010109			•																		
0315	GROMMET	60039017			•																		
0316	GROMMET - DOUBLE	60042707			•																		
																			</				





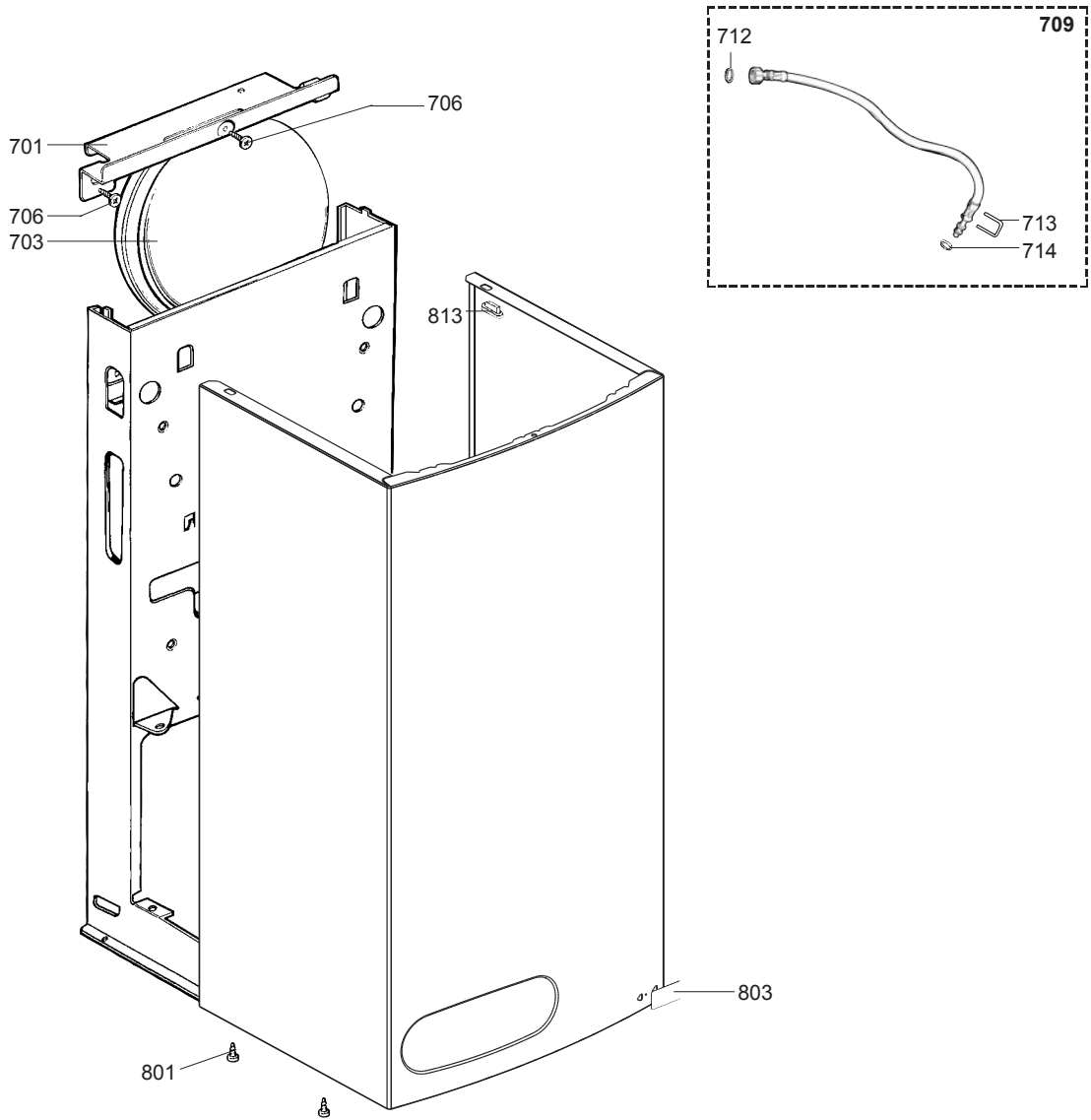


				ELEXIA COMFORT 24 CF ELEXIA COMFORT 24 CF																		31	
	Description	Manf. Pt. N	Type	1	2	3	4	5	6	7	8	9	10	11	12	13	14	15	16	17	18	From	to
0500	HYDRAULIC BLOCK																						
0501	HEAT EXCHANGER TUBE	61302004		●	●																		
0502	CLIP	61010012-02		●	●																		
0504	O-RING D: 17-4	60024164-51		●	●																		
0505	MOTOR - 3-WAY VALVE	61302410		●	●																		
0506	PLUG	61002490		●	●																		
0507	O-RING D: 13.6-2.7	60024164-18		●	●																		
0508	PIN	61016207		●	●																		
0509	VALVE	61302411		●	●																		
0510	THERMISTOR TEMP. SENSOR	61000733		●	●																		
0511	TEMPERATURE SENSOR CLIP	61002083		●	●																		
0514	WATER / WATER HEAT EXCHANGER 16	61302409-01		●	●																		
0515	SCREW CLX M 5-20	61017600		●	●																		
0516	CLIP	61010609		●	●																		
0518	LEFT HAND HYDRAULIC BLOCK	61301956		●	●																		
0520	FLEXIBLE PIPE	61301998		●	●																		
0522	CLIP	61010005		●	●																		
0523	O-RING D: 18.4-2.7	60024164-22		●	●																		
0524	O-RING D: 15.6-1.78	61009834-49		●	●																		
0526	O-RING 8.9X2.7	61009834-14		●	●																		
0535	PRESSURE RELIEF VALVE KIT	60081978			●																		01/04
	PRESSURE RELIEF VALVE KIT	60081978		●																			
	PRESSURE RELIEF VALVE KIT	61400159			●																02/04		
0536	PRESSURE RELIEF VALVE	61301927		●	●																		
0539	O-RING D: 8.9-1.9	60024164-13		●	●																		
0540	SPINDLE	61302539		●	●																		
0541	O-RING D: 3.6-2.4	61009834-53		●	●																		
0545	DIAPHRAGM	60081977		●	●																		
0546	O-RING D: 2.9-1.78	60024164-54		●	●																		
0547	GAS FILTER	60037309		●	●																		
0551	GAS TUBE	61302005		●	●																		
0553	WATER FILTER	61301924		●	●																		
0554	PRESSURE SENSOR 0.8 B	61003495			●																		01/04
	PRESSURE SENSOR 0.8b	61310364			●																02/04		
0555	SHEET GASKET D: 8.5-4.1-1.5	60061852-12			●																		
0558	PUMP LEAD (2 SPEEDS)	61306995		●	●																		
0559	GASKET KIT	61304618		●	●																		
0560	AIR SEPARATOR HEAD ASSEMBLY	61304608		●	●																		
0561	RIGHT HAND HYDRAULIC BLOCK	61301936		●	●																		
0562	PLUG	61016752		●	●																		
0563	CLIP	61002406		●	●																		
0564	O-RING D: 24.6-3.6	61009834-30		●	●																		
0567	CLIP	60030898-03		●	●																		
0568	TAP KNOB	60066107		●	●																		
0569	EXCHANGER GASKET	65104334		●	●																		
0570	TUBE : PUMP TO HEAT EXCHANGER	61302003		●																			
	TUBE : PUMP TO HEAT EXCHANGER	61302003			●																02/04		
	TUBE : PUMP TO HEAT EXCHANGER	61305707			●																	01/04	
0571	O-RING D: 16-1.9	61009833-37		●	●																		
0572	PUMP + AIR SEPARATOR 15/50	61301964		●	●																		
	PUMP + AIR SEPARATOR 15/60	61303461		●	●																		
0573	CAPACITOR	61000652-10		●	●																		
0575	BY-PASS	61301960		●	●																		
0578	O-RING D: 5.7-1.9	60024164-10		●	●																		
0583	CLIP	61301900		●	●																		
0584	NUT	61012886		●	●																		
0585	CLIP	61303463		●	●																		
0586	FLEXIBLE PIPE L:230	61310404			●																02/04		
	FLEXIBLE PIPE L:350	61301999			●																	01/04	
	FLEXIBLE PIPE L:350	61301999		●																			
0589	NUT M 5	61016604		●	●																		
0590	MICRO SWITCH	61301904		●	●																		
0592	WATER CONTROL 8L/MN	61301952		●	●																		
0593	O-RING D: 20.1-1.6	60024164-58		●	●																		
0594	FLOW REGULATORE 8L/MN (RED)	61017288-08		●	●																		
0595	O-RING D: 25-2.4	60024164-32		●	●																		
0596	PIN	61308332		●	●																		
0597	GASKETS SET - HYDRAULIC BLOC	60081985		●	●																		

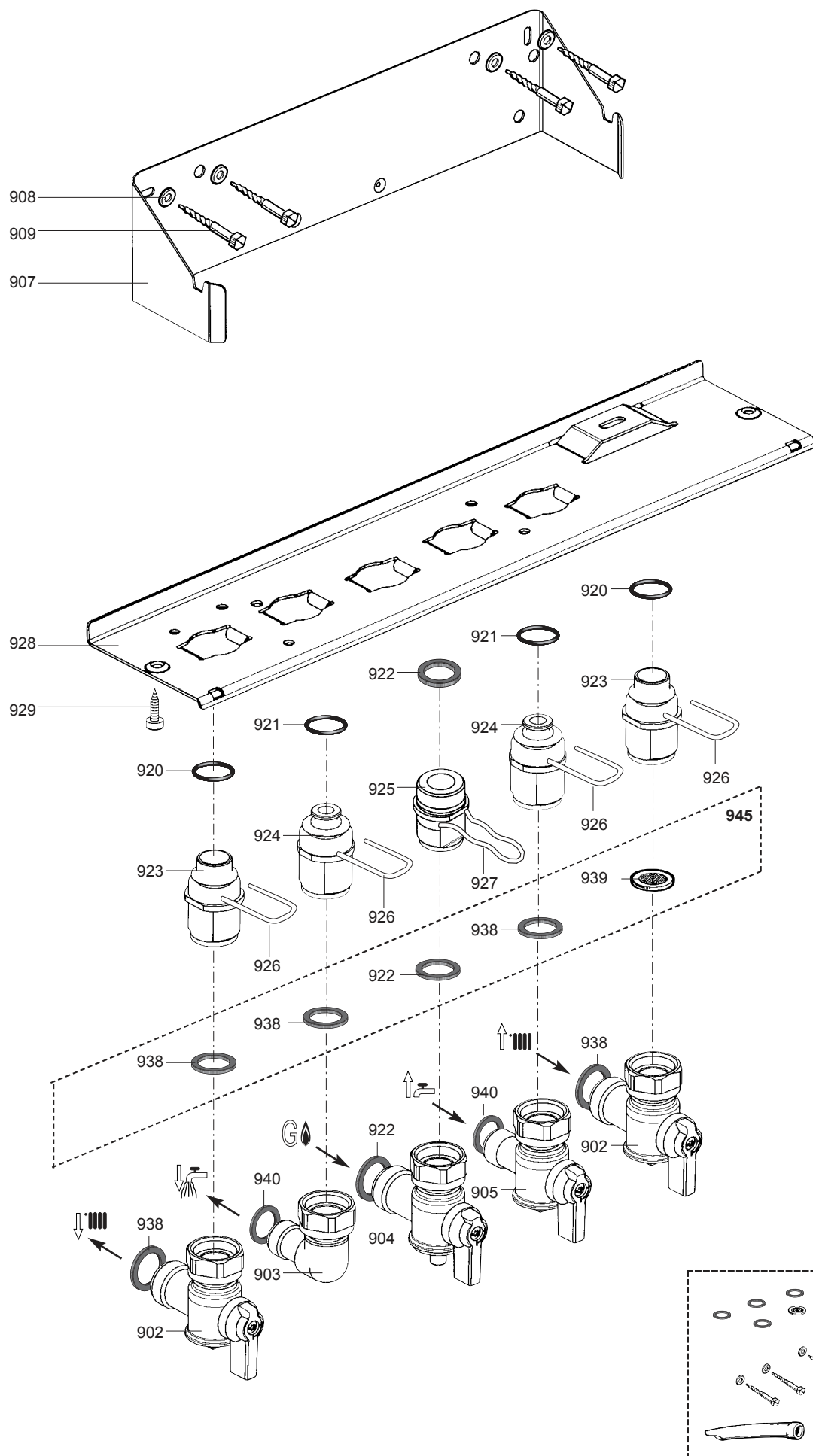




Gas-wall boiler atm. burner



Gas-wall boiler atm. burner

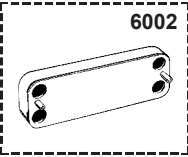
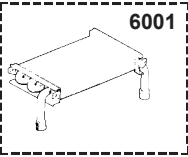




5000



6000



Gas-wall boiler atm. burner

## LIST OF THE ABBREVIATIONS

HW .....	: Hot water.
CW .....	: Cold water.
C .....	: Ceramic resistance (normal heating).
Ca .....	: Ceramic resistance (accelerated heating)
TP .....	: Immersion heater.
1F .....	: With fittings.
2F .....	: Without fittings.
3F .....	: With fittings and another outlet connection.
AMI .....	: With mixing valve.
SMI .....	: Without mixing valve.
PUISS .....	: Power of th appliance.
PN .....	: Appliance with normal pression.
LP .....	: Appliance with low pression.
PV .....	: Appliance with variable power.
PF .....	: Appliance with fixed power.

## IDENTIFICATION PLATE

### SERIAL NUMBER

<b>10 Characters :</b>	04 05 125 011	
		Sequential number
		Manufacturing day
		Year of manufacture
<b>11 Characters :</b>	1 95 065004 - 31	
Month of manufacture : from 1 to 9 → Jan. to Sep., O → Oct., N → Nov., D → Dec.		Technical number of the appliance
		Sequential number
		Year of manufacture
<b>19 Characters :</b>	08 05 0013199 900640031	
Year of manufacture		Product reference
Month of manufacture		Sequential number
<b>20 Characters :</b>	3675007 XX 2 07 070 00315	
Product reference		Sequential number
Millenium of manufacture		Manufacturing day
		Year of manufacture
<b>21 Characters :</b>	3675007 XX 07 070 0000315	
Product reference		Sequential number
Year of manufacture		Manufacturing day