



ARISTON

SPARE PARTS EXPLODED VIEW GAS-WALL CONDENSING BOILERS

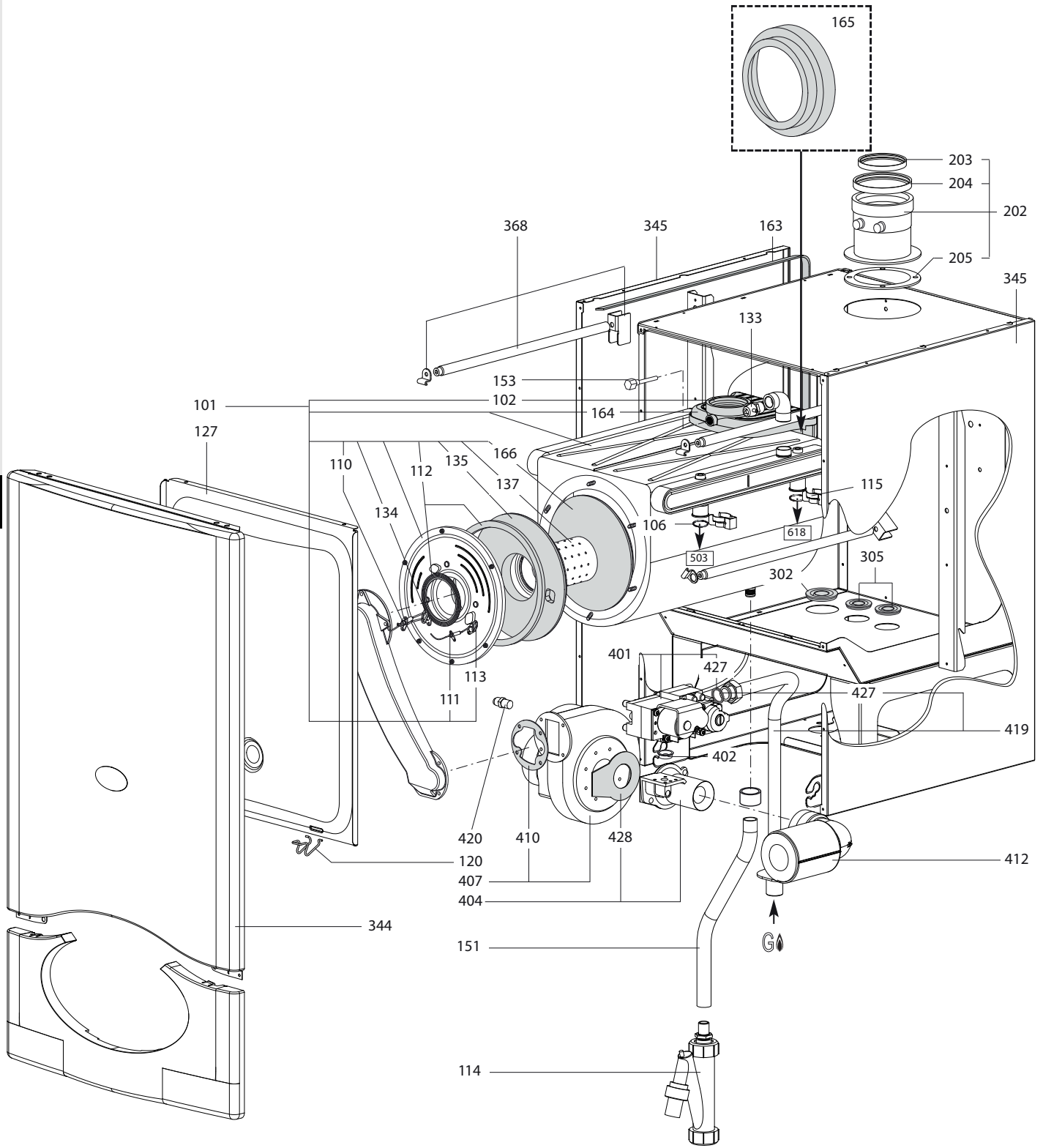
Model

GENUS PREMIUM EVO HP

R8203399-04 - 16/11/2020

1	3581415	GENUS PREMIUM EVO HP 45KW	07-2013	-
1	3581576	GENUS PREMIUM EVO HP 45KW CN	06-2015	-
2	3581416	GENUS PREMIUM EVO HP 65KW	07-2013	-
2	3581577	GENUS PREMIUM EVO HP 65KW CN	06-2015	-
3	3581417	GENUS PREMIUM EVO HP 85KW	07-2013	10-2015
3	3581578	GENUS PREMIUM EVO HP 85KW CN	06-2015	-
4	3581418	GENUS PREMIUM EVO HP 100KW	07-2013	10-2015
5	3581419	GENUS PREMIUM EVO HP 115KW	07-2013	10-2015
6	3581420	GENUS PREMIUM EVO HP 150KW	07-2013	10-2015
7	3581564	GENUS PREMIUM EVO HP 45KW EU	11-2015	-
8	3581565	GENUS PREMIUM EVO HP 65KW EU	11-2015	-
9	3581566	GENUS PREMIUM EVO HP 85KW EU	11-2015	-
10	3581567	GENUS PREMIUM EVO HP 100KW EU	11-2015	-
11	3581568	GENUS PREMIUM EVO HP 115KW EU	11-2015	-
12	3581569	GENUS PREMIUM EVO HP 150KW EU	11-2015	-

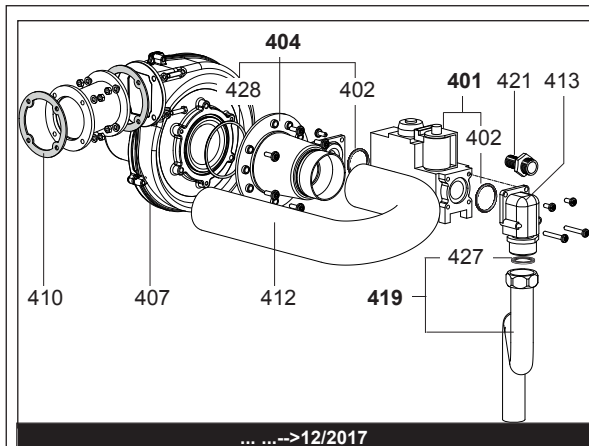
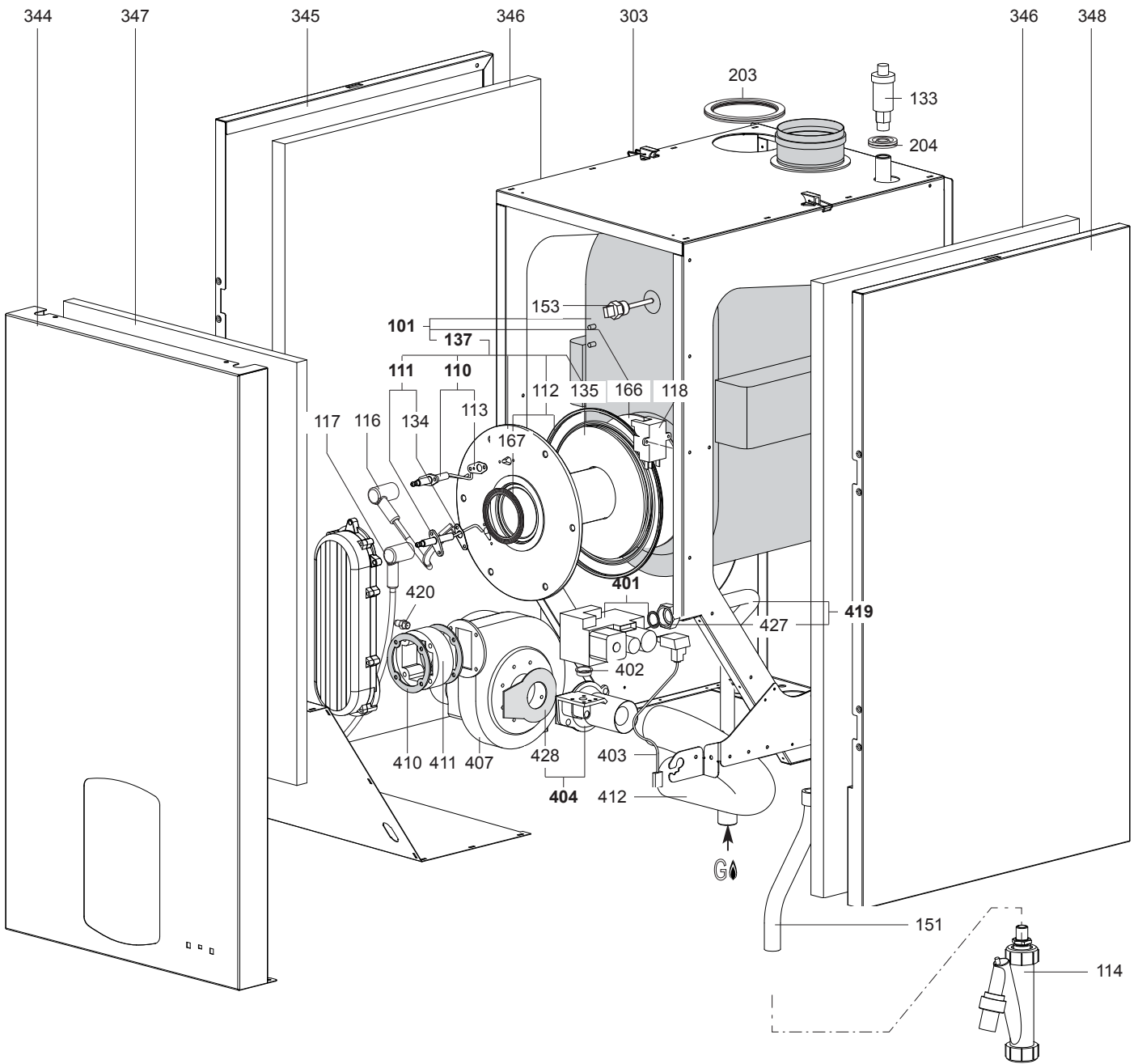
Col	Reference	Model type	Begin	End
-----	-----------	------------	-------	-----



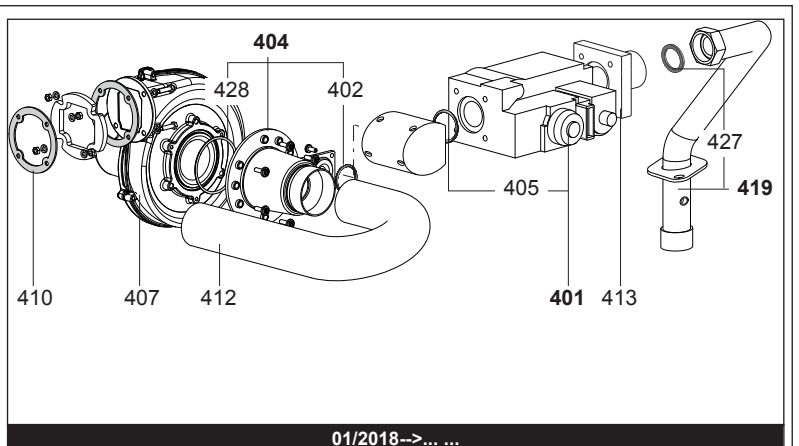
100
200
300
400

GENUS PREMIUM EVO HP/EU

Gas-wall condensing boilers

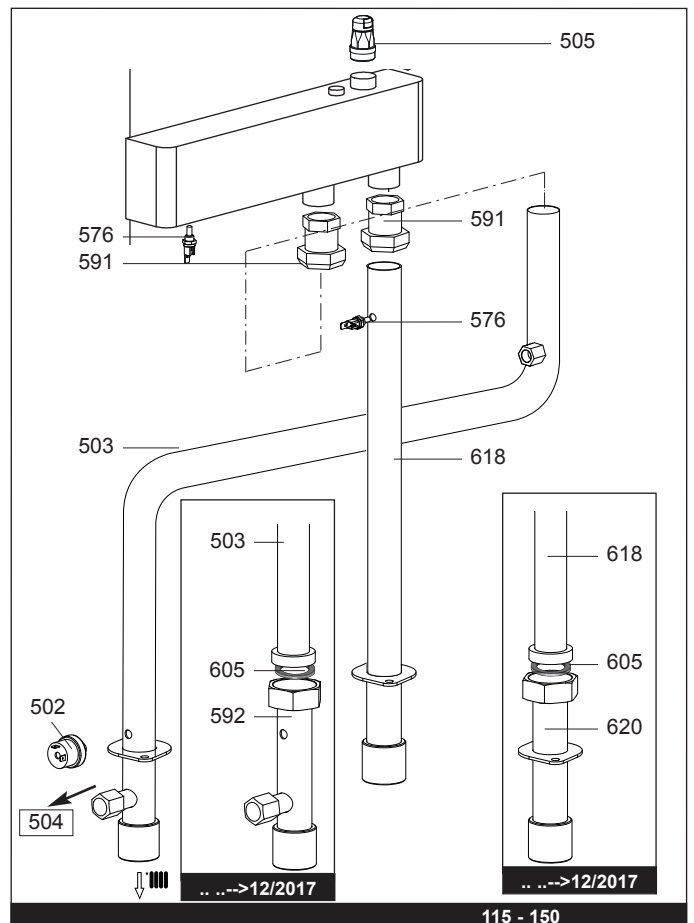
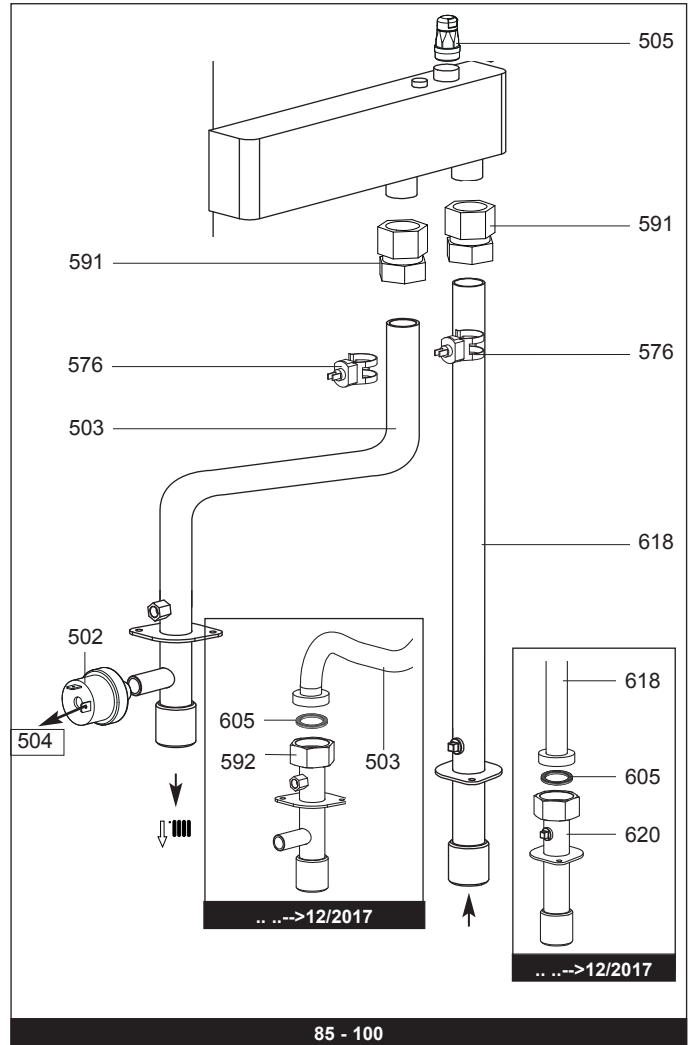
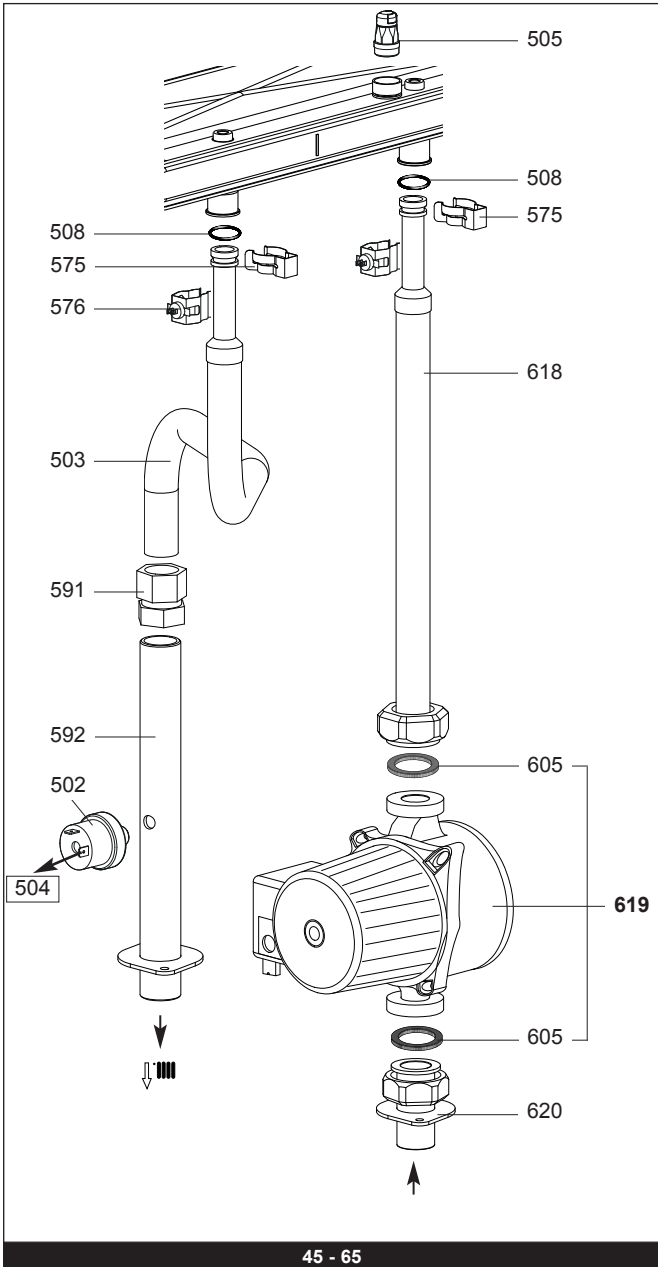


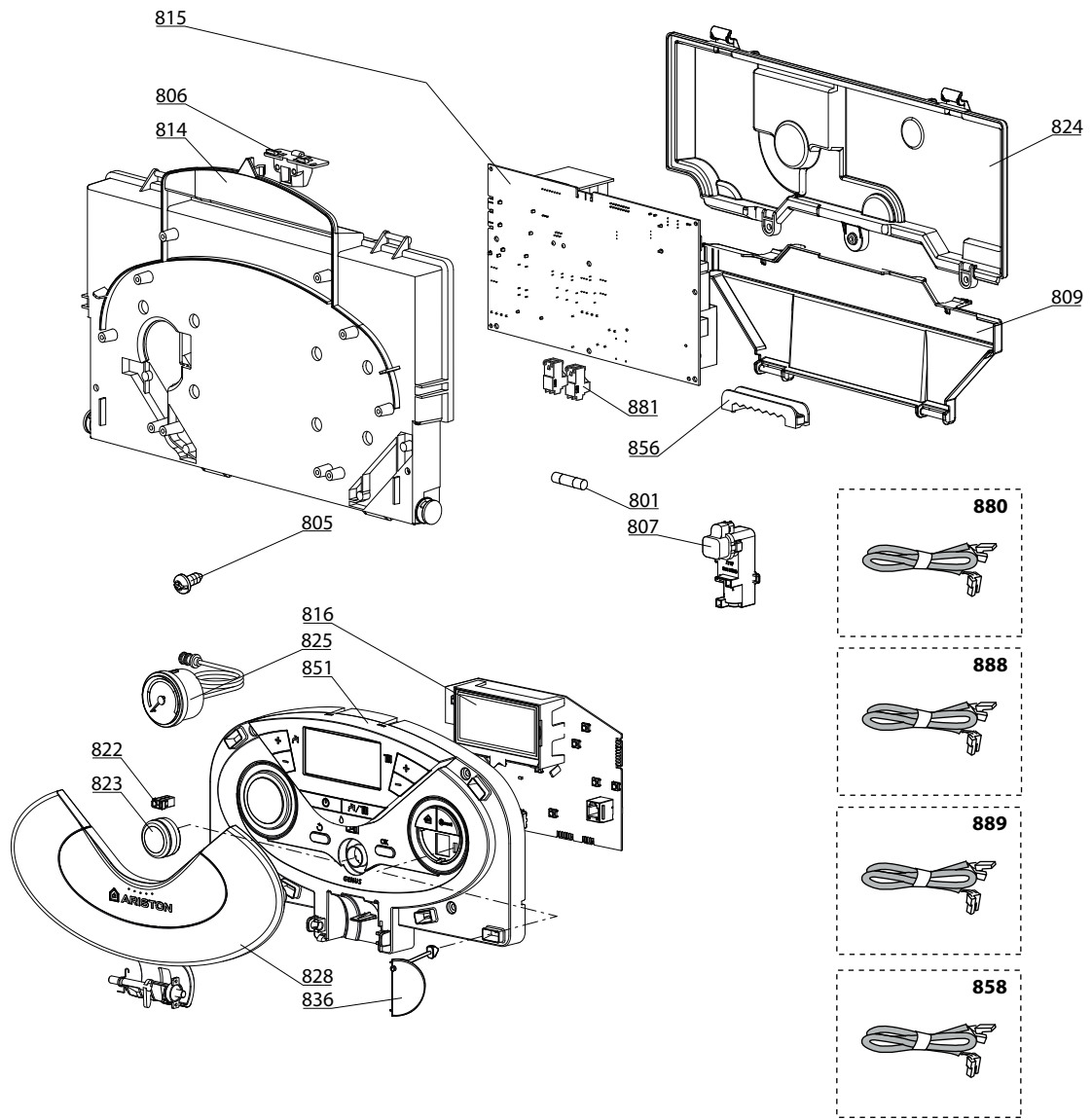
... ..->12/2017



01/2018->... ..

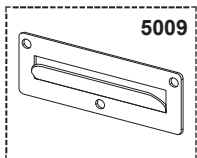
115-150





5000

- 5001**
 Transf. gaz > GPL
 Conv. gas > GPL
 Trasn. gas > GPL
 Transf. gas > GPL



GENUS EVO HP 45
 GENUS EVO HP 65
 GENUS EVO HP 85
 GENUS EVO HP 100
 GENUS EVO HP 115
 GENUS EVO HP 150
 GENUS EVO HP 45 EU
 GENUS EVO HP 65 EU
 GENUS EVO HP 85 EU
 GENUS EVO HP 100 EU
 GENUS EVO HP 115 EU
 GENUS EVO HP 150 EU

31

Description	Manf. Pt. N	Type	GENUS EVO HP/150 EU																		From	to
			1	2	3	4	5	6	7	8	9	10	11	12	13	14	15	16	17	18		
0801 FUSE 250V 2A	61003456		•	•	•	•	•	•	•	•	•	•	•	•								
0805 TAPPING SCREW TCBL D:4 L:10	61020509		•	•	•	•	•	•	•	•	•	•	•	•								
0806 PUSH	65104228		•	•	•	•	•	•	•	•	•	•	•	•								
0807 TRANSFORMER ZAG2 10Va	64201912		•	•	•	•	•	•	•	•	•	•	•	•								
0809 INSPECTION COVER	60001618		•	•	•	•	•	•	•	•	•	•	•	•								
0814 CONTROL PANEL COVER (FRONT)	60001616-01		•	•	•	•	•	•	•	•	•	•	•	•								
0815 P.C.B. (MAIN)	65113369		•	•	•	•	•	•	•	•	•	•	•	•								
0816 P.C.B. (DISPLAY)	65111882-02		•	•	•	•	•	•	•	•	•	•	•	•								
0822 PUSH (CASE DOOR)	65100676		•	•	•	•	•	•	•	•	•	•	•	•								
0823 KNOB	65111927		•	•	•	•	•	•	•	•	•	•	•	•								
0824 CONTROL PANEL COVER (REAR)	60001617		•	•	•	•	•	•	•	•	•	•	•	•								
0825 PRESSURE GAUGE 4Bars L:1000	60002222		•	•					•	•												
0828 FRONT COVER	65104306		•	•	•	•	•	•	•	•	•	•	•	•								
0836 SHIELD	65111886		•	•	•	•	•	•	•	•	•	•	•	•								
0851 FRONT CONTROL PANEL COMPLETE	60002224		•	•	•	•	•	•	•	•	•	•	•	•								
0856 CABLE CLAMP	65103377		•	•	•	•	•	•	•	•	•	•	•	•								
0858 CABLE PWM PUMP	65115552	PARA	•	•					•	•												
0880 CABLE (GAS VALVE)	64202190						•	•					•	•								
CABLE (GAS VALVE)	65107360		•	•	•	•			•	•		•	•	•								
CABLE (IGNITION ELECTRODE)	64201658					•	•	•			•	•	•	•								
CABLE (IONIZATION ELECTRODE)	64201657					•	•	•			•	•	•	•								
CABLE (PUMP)	65115551	PARA	•	•					•	•												
DISPLAY WIRING - 5 WIRES BLUES	60000746		•	•	•	•	•	•	•	•	•	•	•	•								
EARTH CABLE (SPARK GENERATOR)	65107361		•	•					•	•			•	•								
INTERCONNECTION CABLE - 3 WIRES	60001884		•	•	•	•	•	•	•	•	•	•	•	•								
PUMP CABLE	60002214	PARA	•	•																		
PUMP CABLE	60002214	RGS	•	•																		
0881 CONNECTOR 2P	65111933		•	•	•	•	•	•	•	•	•	•	•	•								
CONNECTOR 3P (x5)	65111934-01		•	•	•	•	•	•	•	•	•	•	•	•								
0888 NTC - OVERHEAT - PRESSURE SENSOR CABLE	60002213		•	•					•	•												
NTC - OVERHEAT - PRESSURE SENSOR CABLE	60002220					•	•				•	•										
NTC - OVERHEAT - PRESSURE SENSOR CABLE	60002221							•	•			•	•									
0889 FAN-GAS VALVE CABLE (230V)	60002212		•						•													
FAN-GAS VALVE CABLE (230V)	60002217			•						•												
FAN-GAS VALVE CABLE (230V)	60002218				•	•					•	•										
FAN-GAS VALVE CABLE (230V)	60002219						•	•					•	•								
5001 CONVERSION KIT > LPG	64201566		•	•					•	•												
CONVERSION KIT > LPG 100 KW	64202966						•					•										
CONVERSION KIT > LPG 115-150 KW	64202967							•	•					•	•							
CONVERSION KIT > LPG 85 KW	64202965						•				•											
5009 WALL MOUNT BRACKET GENUS HP 85-150	64202950				•	•	•	•			•	•	•	•								
WALL MOUNT BRACKET GENUS HP 45-65	64202949		•	•					•	•												

LIST OF THE ABBREVIATIONS

HW	: Hot water.
CW	: Cold water.
C	: Ceramic resistance (normal heating).
Ca	: Ceramic resistance (accelerated heating)
TP	: Immersion heater.
1F	: With fittings.
2F	: Without fittings.
3F	: With fittings and another outlet connection.
AMI	: With mixing valve.
SMI	: Without mixing valve.
PUISS	: Power of th appliance.
PN	: Appliance with normal pression.
LP	: Appliance with low pression.
PV	: Appliance with variable power.
PF	: Appliance with fixed power.

IDENTIFICATION PLATE

SERIAL NUMBER

10 Characters :	04 05 125 011	
		Sequential number
		Manufacturing day
		Year of manufacture
11 Characters :	1 95 065004 - 31	
Month of manufacture :		Technical number of the appliance
from 1 to 9 → Jan. to Sep.,		Sequential number
O → Oct., N → Nov.,		Year of manufacture
D → Dec.		
19 Characters :	08 05 0013199 900640031	
Year of manufacture		Product reference
Month of manufacture		Sequential number
20 Characters :	3675007 XX 2 07 070 00315	
Product reference		Sequential number
Millenium of manufacture		Manufacturing day
		Year of manufacture
21 Characters :	3675007 XX 07 070 0000315	
Product reference		Sequential number
Year of manufacture		Manufacturing day