



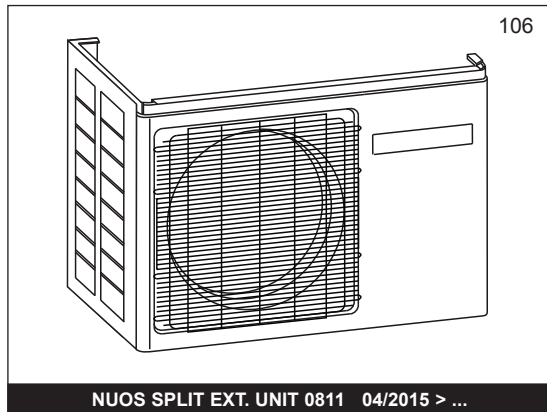
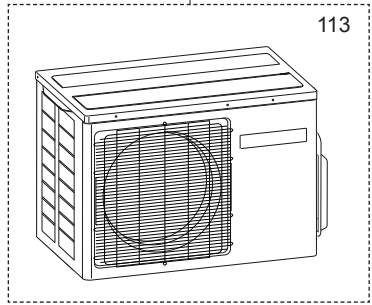
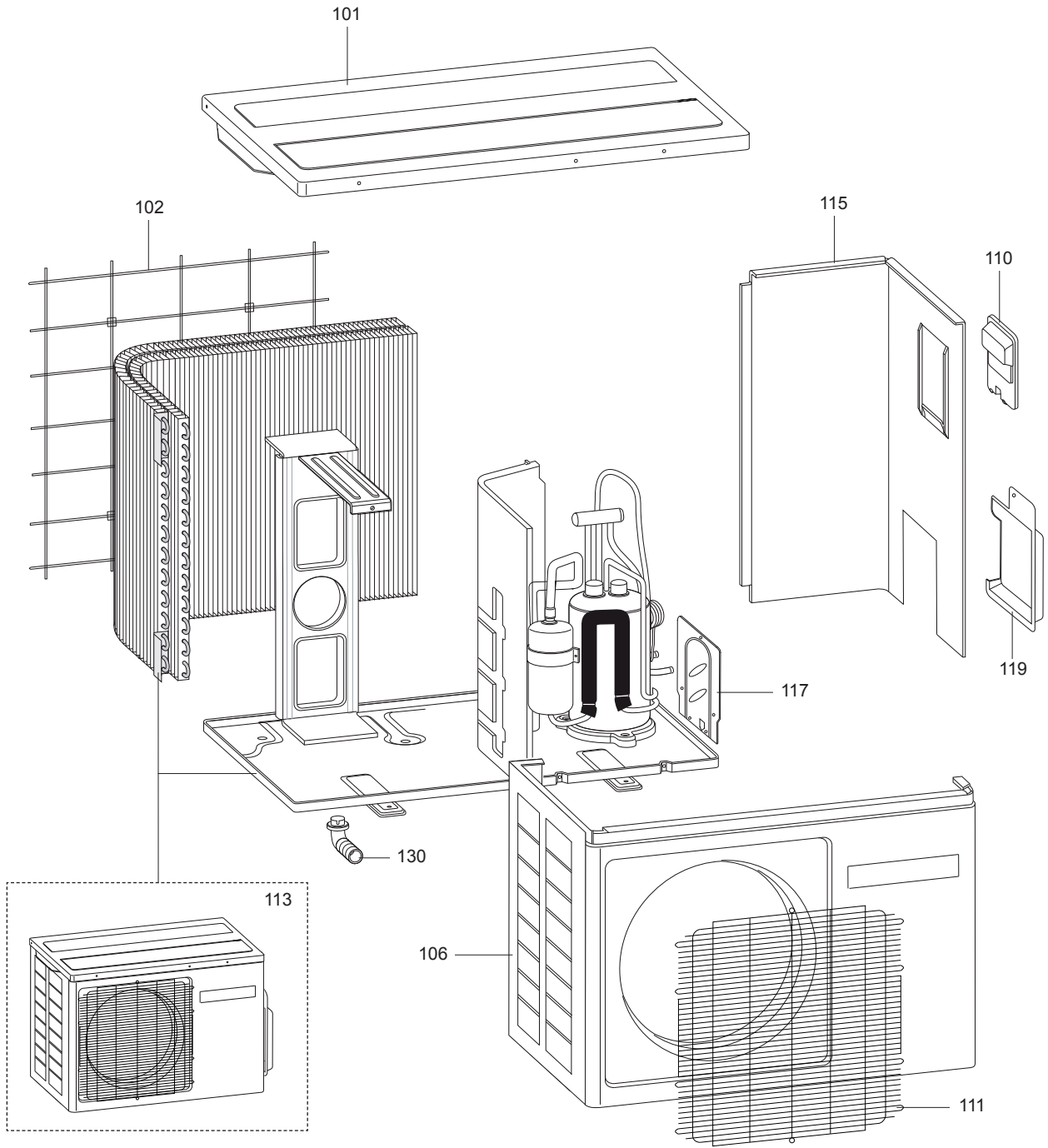
SPARE PARTS EXPLODED VIEW
HEAT PUMPS

Model

NUOS SPLIT (JANUS IV)

R8216736-09 - 26/09/2017

1	3603528	NUOS SPLIT EXT UNIT 0811	06-2011	01-2015
2	3629024	NUOS SPLIT EXT UNIT 0811	04-2015	-
Col	Reference	Model type	Begin	End

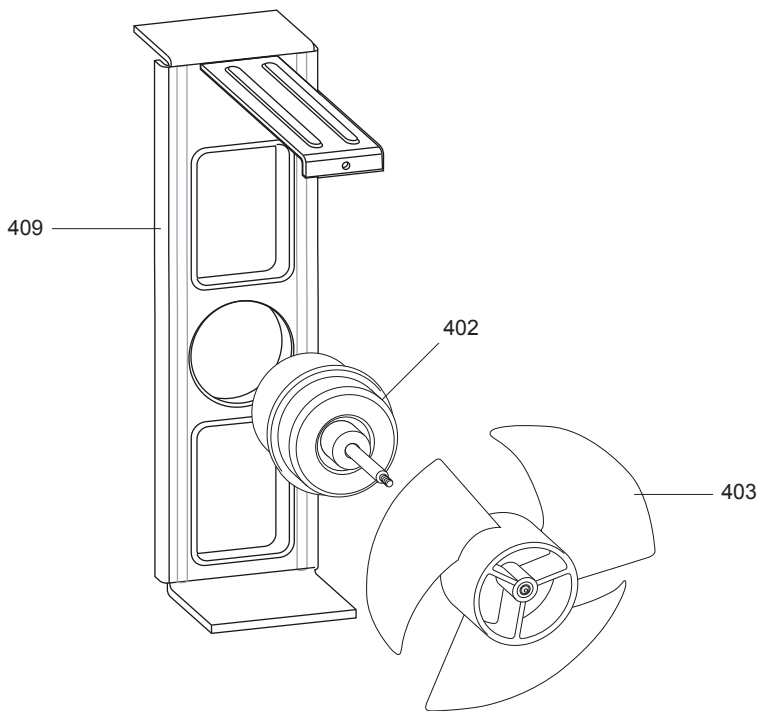
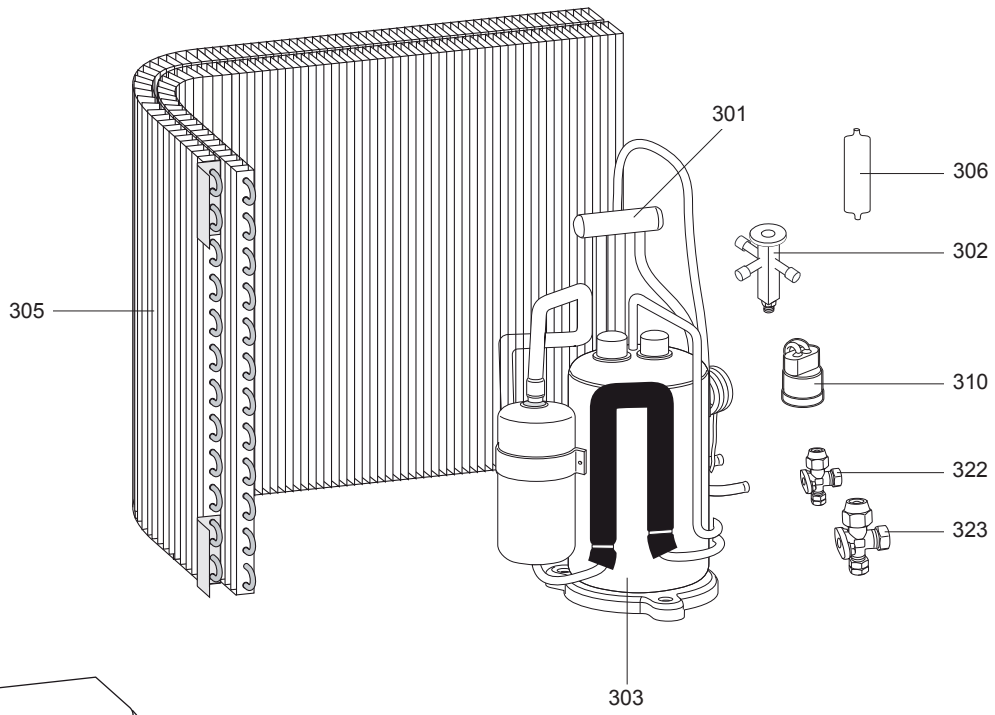
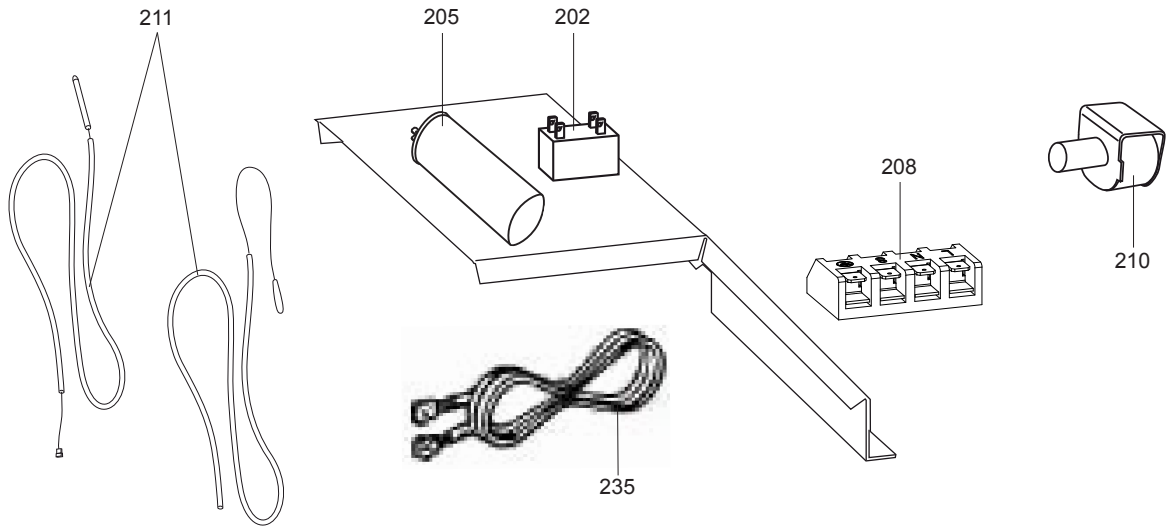


NUOS SPLIT EXT. UNIT 0811 04/2015 > ...

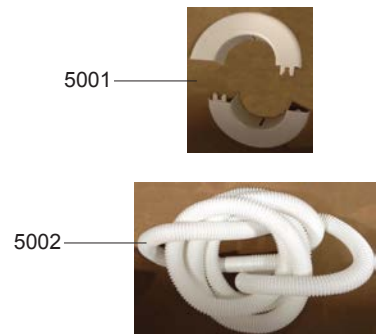
NUOS S, 08/11 < 01/15
 NUOS S, 08/11 > 04/15

31

☉⇒	Description	Manf. Pt. N	Type	1 2 3 4 5 6 7 8 9 10 11 12 13 14 15 16 17 18 From to																	
				1	2	3	4	5	6	7	8	9	10	11	12	13	14	15	16	17	18
0100	CHASSIS-FRONT CASE																				
0101	TOP COVER	65152943			●																
	TOP COVER	65151508		●																	
0102	BACK NET	65152944			●																
	BACK NET	65151513		●																	
0106	FRONT PANEL	65152945			●																
	FRONT PANEL	65151510		●																	
0110	HANDLE	65152946			●																
	HANDLE	65151514		●																	
0111	FRONT NET	65153306		●																	
0113	EXTERNAL COMPLETE UNIT	60001844		●																	
	EXTERNAL COMPLETE UNIT	65115446			●																
0115	RIGHT PANEL	65152947			●																
	RIGHT PANEL	65151511		●																	
0117	VALVE PLATE	65152948			●																
	VALVE SUPPORT	65151516		●																	
0119	VALVE COVER	65152949			●																
	VALVE COVER	65151515		●																	
0130	CONNECTOR FOR WATERING	65153243			●																



5000



NUOS S, 08/11 < 01/15
 NUOS S, 08/11 > 04/15

31

Description	Manf. Pt. N	Type																			From	to
			1	2	3	4	5	6	7	8	9	10	11	12	13	14	15	16	17	18		
0200 ELECTRICAL BOX																						
0202 CAPACITOR 2,5uF	65152950			●																		
CAPACITOR 2,5uF	573945			●																		
0205 COMPRESSOR CAPACITOR	65152951				●																	
COMPRESSOR CAPACITOR 35uF	65102278				●																	
0208 TERMINAL BLOCK, 5P	65151499				●																	
TERMINAL BLOCK, 5P	65151606				●																	
0210 4-WAY VALVE COIL	65101547				●																	
4-WAY VALVE COIL	65152935				●																	
0211 TUBE AND OUTDOOR TEMP. SENSOR (KIT)	65152030				●																	
TUBE AND OUTDOOR TEMP. SENSOR (KIT)	65151507				●																	
0235 SIGNAL WIRE INDOOR TO OUTDOOR	65151767				●	●																
0300 REFRIGERATION UNIT																						
0301 4-WAY VALVE	65152936				●																	
4-WAY VALVE	65101545				●																	
0302 THERMOSTATIC EXPANSION VALVE	60001848					●																
THERMOSTATIC EXPANSION VALVE	65151500				●																	
0303 COMPRESSOR	65110096				●	●																
0305 CONDENSER	65151501				●																	
CONDENSER	65152952				●																	
0306 DRY-FILTER	65151554				●	●																
0310 PRESSURE SWITCH	65151519				●																	
PRESSURE SWITCH	65153603				●																	
0322 LIQUID VALVE 5/8"	65152977				●																	
LIQUID VALVE 5/8"	65151505				●																	
0323 GAS VALVE 7/16"	65151506				●																	
GAS VALVE 7/16"	65152939					●																
0400 FAN GROUP																						
0402 FAN MOTOR	65151503				●																	
FAN MOTOR	65152953				●																	
0403 FAN	65151504				●																	
FAN	65152954				●																	
0409 FAN MOTOR SUPPORT	65151502				●																	
FAN MOTOR SUPPORT	65152955				●																	
5000 ACCESSORIES																						
5001 LOCKING RING	65153242				●																	
5002 DISCHARGE PIPE (CONDENSATE)	65153244				●																	

LIST OF THE ABBREVIATIONS

HW	: Hot water.
CW	: Cold water.
C	: Ceramic resistance (normal heating).
Ca	: Ceramic resistance (accelerated heating)
TP	: Immersion heater.
1F	: With fittings.
2F	: Without fittings.
3F	: With fittings and another outlet connection.
AMI	: With mixing valve.
SMI	: Without mixing valve.
PUISS	: Power of th appliance.
PN	: Appliance with normal pression.
LP	: Appliance with low pression.
PV	: Appliance with variable power.
PF	: Appliance with fixed power.

The indications mentioned on the prices, commercial or technical literature and the scheme are written for your guidance and are available at a given time. The CONSTRUCTOR retains the power to modify the presentation, the form, the size, or the conception or the material of the products.
