

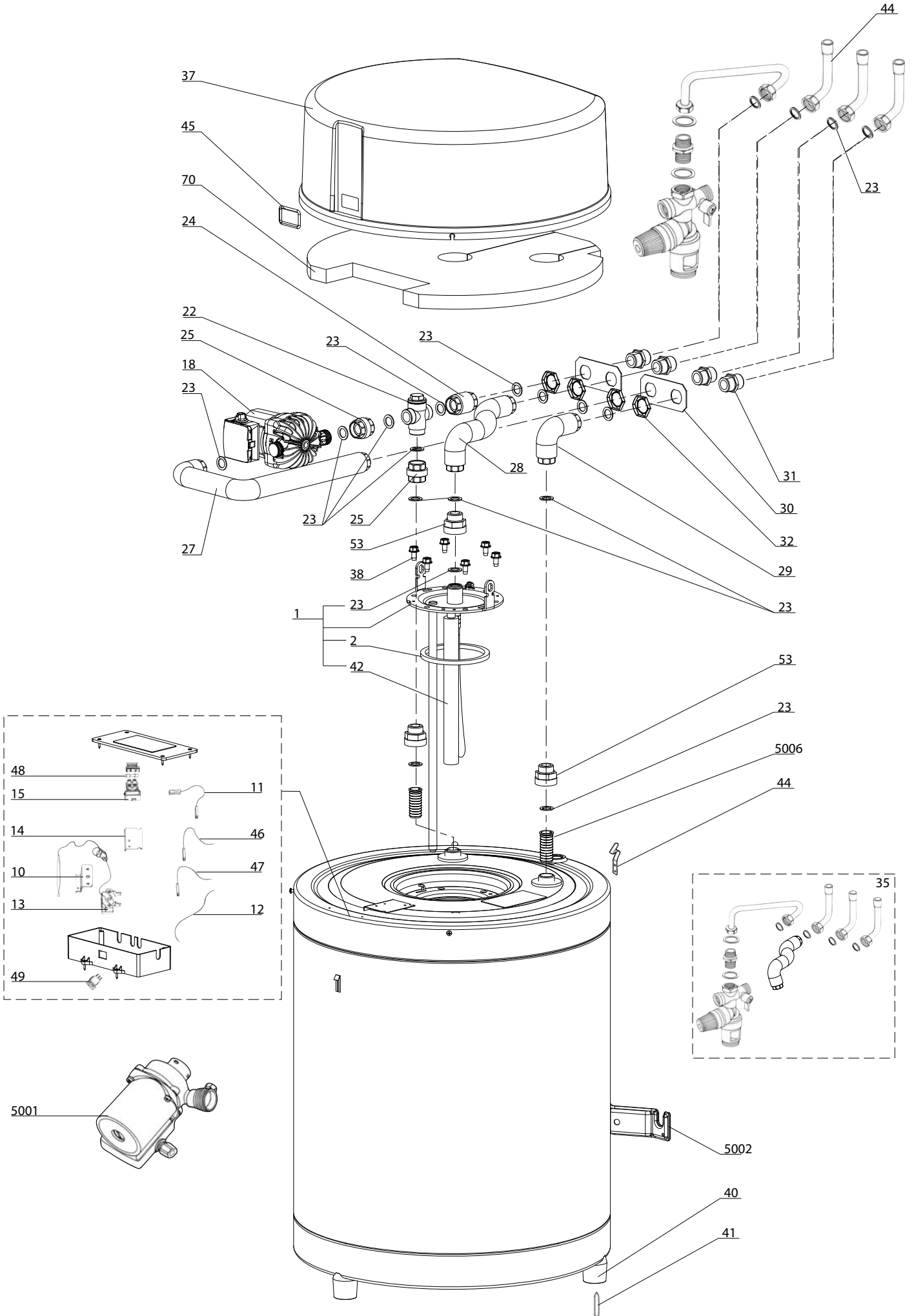
SPARE PARTS EXPLODED VIEW BOILERS


Model

CELECTIC - 2

R8208220-03 - 01/12/2017

1	000003060594	CELECTIC 80 NEU EU 2	07-2017	-
1	3070575	CELECTIC 80 CDZ CHX - EU 2	09-2017	-
1	3070574	CELECTIC 80 CDZ ARI - EU 2	09-2017	-
2	000003060595	CELECTIC 100 NEU EU 2	07-2017	-
2	3070577	CELECTIC 100 CDZ CHX - EU 2	09-2017	-
2	3070576	CELECTIC 100 CDZ ARI - EU 2	09-2017	-
3	000003060592	CELECTIC 150 NEUTRAL 2	07-2017	-
3	3070572	CELECTIC 150 CDZ ARI - EU 2	09-2017	-
3	3070573	CELECTIC 150 CDZ CHX - EU 2	09-2017	-
Col	Reference	Model type	Begin	End



	Description	Manf. Pt. N	Type																			From	to			
				1	2	3	4	5	6	7	8	9	10	11	12	13	14	15	16	17	18					
0001	FLANGE WITH ANODE	60002864		•	•	•																				
0002	FLANGE GASKET D:121.3-105-7.1	60071829		•	•	•																				
0010	SUPPORT BRACKET	61312190		•	•	•																				
0011	THERMOSTAT CABLE	61005239		•	•	•																				
0012	EARTH WIRE	61013391		•	•	•																				
0013	THERMOSTAT 57C	61316629		•	•	•																				
0014	CONNECTING TERMINAL SUPPORT	61005333		•	•	•																				
0015	CONNECTING TERMINAL	61005243		•	•	•																				
0018	PUMP WILO ZRS12/5-1 KU FSR 12	60002859		•	•	•																				
0022	WATER GOVERNOR ASSY	60002860		•	•	•																				
0023	SHEET GASKET D: 24-16-1.5	61019058		•	•	•																				
0024	CONNECTING PIPE	61004432		•	•	•																				
0025	CONNECTING PIPE	60002862		•	•	•																				
0027	HEATING RETURN TUBE	60002861		•	•	•																				
0028	TUBE	60001180		•	•	•																				
0029	HOT WATER TUBE	61310133		•	•	•																				
0030	CONNECTION PLATE	61312193		•	•	•																				
0031	CONNECTION M/M 3/4	61004422		•	•	•																				
0032	LOCK NUT	60030661		•	•	•																				
0034	TUBE	61005330		•	•	•																				
0035	ACCESSORY BOX	61005510		•	•	•																				
0036	SAFETY DEVICE 15/21 OR 20/27	60077063		•	•	•																				
0037	PROTECTIVE CAP	61310042		•	•	•																				
0038	SCREW M8X14 (6 PCES)	60000681		•	•	•																				
0039	CLIP	61004877		•	•	•																				
0040	FOOT	61005265		•	•	•																				
0041	PIN	61005323		•	•	•																				
0042	ANODE D:25,5 L:230 M5-M8	993014-01		•	•	•																				
0043	ANODE GASKET	61306237		•	•	•																				
0044	CONNECTING PIPE	61005332		•	•	•																				
0045	PLASTIC COVER	61005352		•	•	•																				
0046	SWITCH CABLE	61005237		•	•	•																				
0047	SIGNAL CABLE	61005238		•	•	•																				
0048	FUSE 250V 2A	60054442		•	•	•																				
0049	SWITCH	61005242		•	•	•																				
0053	DIELECTRIC JOINT 3/4»	926195		•	•	•																				
0070	INSULATION SUPERIOR	60002863		•	•	•																				
5000	ACCESSORIES																									
5001	PUMP UP 15/60 220V	61010613		•	•	•																				
5002	WALL FIXING BRACKET D:470-505-560-570	912006		•	•	•																				
5006	INSERT 3/4 G	60002869				•	•																			
	INSERT 3/4 G	61013839		•																						

CELECTIC - 2
Boilers

LIST OF THE ABBREVIATIONS

HW	: Hot water.
CW	: Cold water.
C	: Ceramic resistance (normal heating).
Ca	: Ceramic resistance (accelerated heating)
TP	: Immersion heater.
1F	: With fittings.
2F	: Without fittings.
3F	: With fittings and another outlet connection.
AMI	: With mixing valve.
SMI	: Without mixing valve.
PUISS	: Power of th appliance.
PN	: Appliance with normal pression.
LP	: Appliance with low pression.
PV	: Appliance with variable power.
PF	: Appliance with fixed power.

IDENTIFICATION PLATE

SERIAL NUMBER

9 Characters : 07 91 00301 (from 01/77 to 12/92)

Month of manufacture 07 91 00301 Sequential number
Year of manufacture 07 91 00301

10 Characters : 95 01 065004 (from 01/93 to 06/95)

Year of manufacture 95 01 065004 Sequential number
Month of manufacture 95 01 065004

OU

10 Characters : 01 95 065004 (from 07/95)

Month of manufacture 01 95 065004 Sequential number
Year of manufacture 01 95 065004

12 Characters : 924 2 3 134 0115

Product reference 924 2 3 134 0115 Sequential number
Year of manufacture 924 2 3 134 0115 Manufacturing day

15 ou 16 Characters : (0)03 070 0001 893077 (from 01/97 to 01/05)

Year of manufacture (0)03 070 0001 893077 Product reference
Day of manufacture (0)03 070 0001 893077 Sequential number

OU

16 Characters : 05 070 0001 0000000 (from 02/05)

Year of manufacture 05 070 0001 0000000 Product reference
Day of manufacture 05 070 0001 0000000 Sequential number

17 Characters : 07 070 00315 3070107

Year of manufacture 07 070 00315 3070107 Product reference
Sequential number
Manufacturing day (70)

21 Characters : 3000115 XX 08115 0000001

Product reference 3000115 XX 08115 0000001 Sequential number
Year (08) / Manufacturing day (115)

22 Characters : 3000115 XX 070416 0000001

Product reference 3000115 XX 070416 0000001 Sequential number
Year (07) / Month (04) / Manufacturing day (16)