



ARISTON

SPARE PARTS EXPLODED VIEW GAS-WALL CONDENSING BOILERS

Model

CLAS PREMIUM EVO

R8203444-03 - 10/01/2017

CLAS PREMIUM EVO

Gas-wall condensing boilers

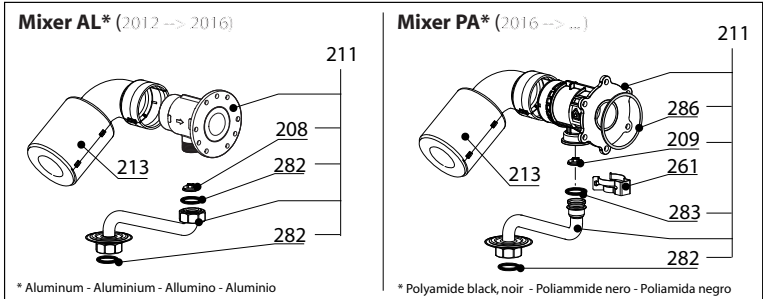
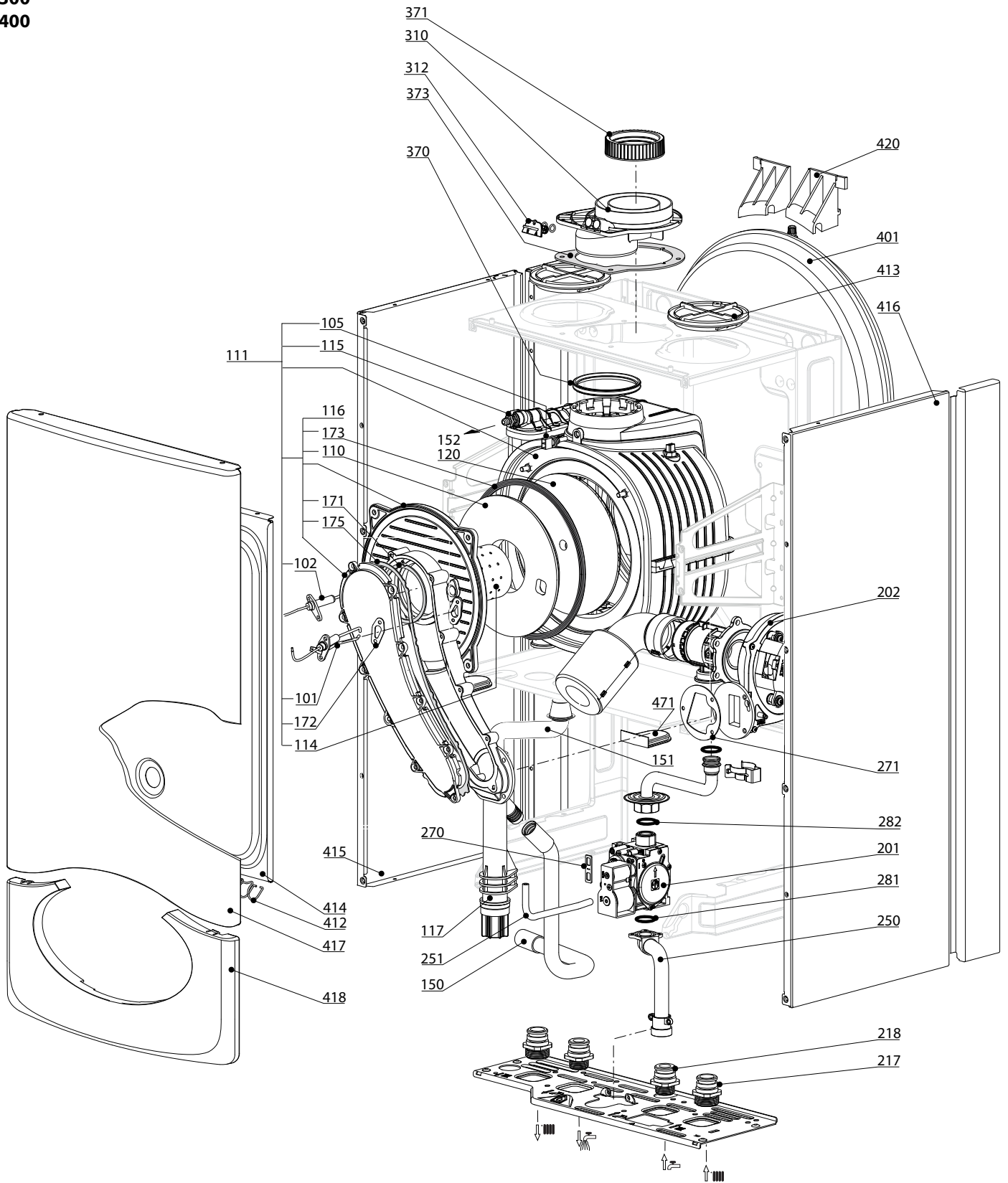
1	3300457	CLAS PREMIUM EVO 24	05-2012	-
2	3300458	CLAS PREMIUM EVO 30	05-2012	-
3	3300614	CLAS PREMIUM EVO L 30KW	04-2014	08-2015
4	3300504	CLAS PREMIUM EVO 35KW	05-2012	-
5	3300462	CLAS PREMIUM EVO SYSTEM 18	05-2012	08-2015
6	3300463	CLAS PREMIUM EVO SYSTEM 24	05-2012	-
7	3300546	CLAS PREMIUM EVO SYSTEM 35	05-2012	-
8	3300697	CLAS PREMIUM EVO 24 EU		
8	3300936	CLAS PREMIUM NET 24 EU (HB)		
9	3300698	CLAS PREMIUM EVO 30 EU		
9	3300937	CLAS PREMIUM NET 30 EU (HB)		
10	3300700	CLAS PREMIUM EVO L 30KW EU	01-2015	-
11	3300699	CLAS PREMIUM EVO 35KW EU		
12	3300701	CLAS PREMIUM EVO SYSTEM 18 EU		
13	3300702	CLAS PREMIUM EVO SYSTEM 24 EU		
14	3300703	CLAS PREMIUM EVO SYSTEM 35 EU		

Col	Reference	Model type	Begin	End
-----	-----------	------------	-------	-----

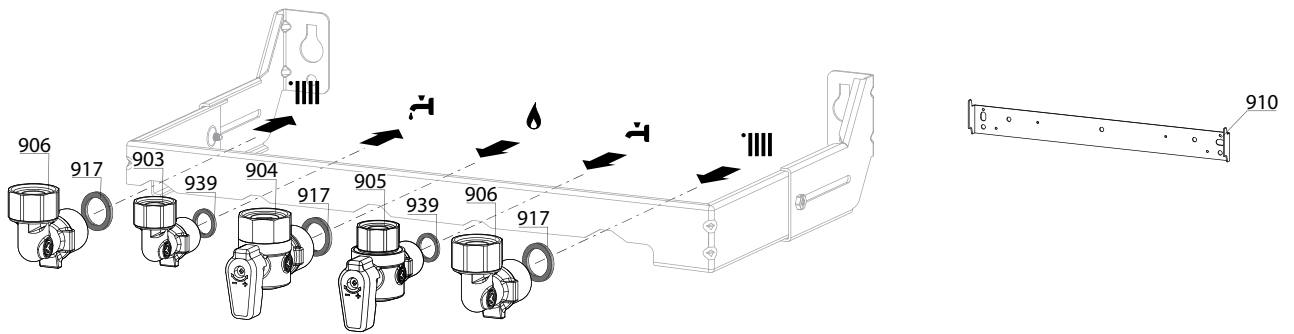
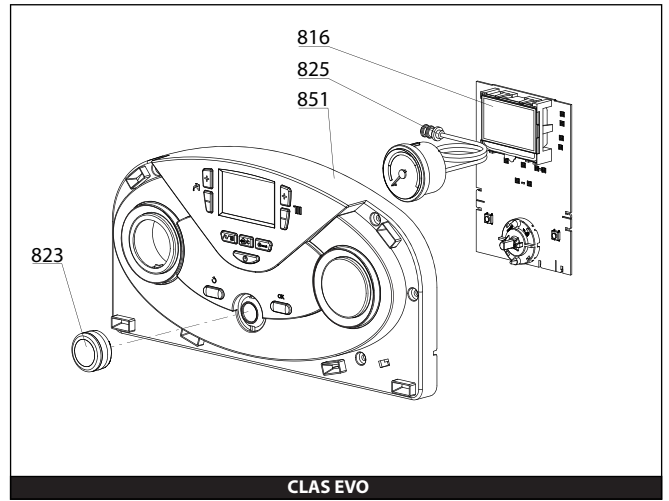
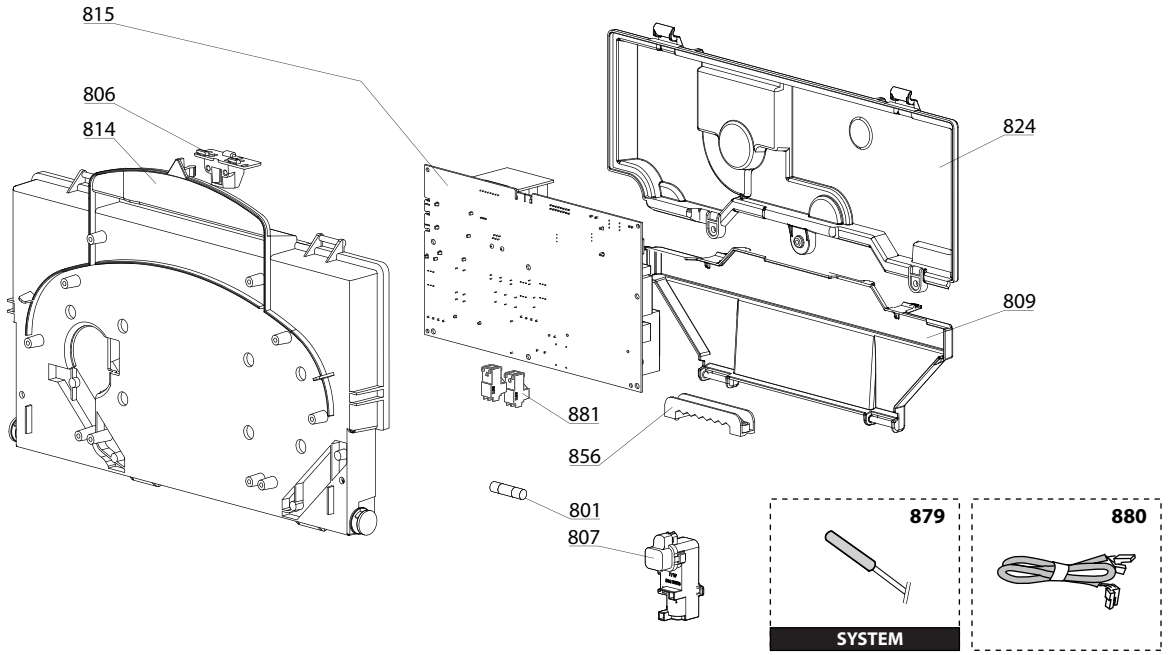
100
200
300
400

CLAS PREMIUM EVO

Gas-wall condensing boilers



☉➔	Description	Manf. Pt N	Type	<div style="display: flex; justify-content: space-between; font-size: small;"> CLAS PREM. EVO 24 CLAS PREM. EVO 30 CLAS PREM. EVO L 30 CLAS PREM. EVO 35 CLAS PREM. EVO SYS. 18 CLAS PREM. EVO SYS. 24 CLAS PREM. EVO SYS. 35 CLAS PREM. EVO 24 EU CLAS PREM. EVO 30 EU CLAS PREM. EVO 35 EU CLAS PREM. EVO SYS. 18 EU CLAS PREM. EVO SYS. 24 EU CLAS PREM. EVO SYS. 35 EU </div>																		From	to
				1	2	3	4	5	6	7	8	9	10	11	12	13	14	15	16	17	18		
0500	FLOW GROUP																						
0501	FLOW GROUP	60001953		●	●	●	●				●	●	●	●									
	FLOW GROUP	65105091-01						●	●	●				●	●	●							
0502	TEMPERATURE PROBE + CLIP	990686-01		●	●	●	●				●	●	●	●									
0503	PRESSURE RELIEF VALVE (3 BAR)	61312668		●	●	●	●				●	●	●	●									
0507	SANITARY HEAT EXCHANGER (16 P.)	65104333		●	●	●					●	●	●										
	SANITARY HEAT EXCHANGER (20 P.)	60001344				●						●											
0512	PLUG	65104445		●	●	●	●				●	●	●	●									
0514	BY-PASS	65104336		●	●	●	●				●	●	●	●									
	BY-PASS 0.45b	60002374				●						●											
0519	INTERFACE 'System +' Open	60001365	SYST+.					●	●	●				●	●	●							
0520	UNION (3/4»-1/2»)	60001367						●	●	●				●	●	●							
0521	HYDRAULIC GROUP SUPPORT	65104311		●	●	●	●				●	●	●	●									
0550	PIPE (SAFETY VALVE)	65104447		●	●	●	●				●	●	●	●									
0551	PIPE (C.H. FLOW)	60000534		●	●	●					●	●	●	●									
	PIPE (C.H. FLOW)	60000590					●					●											
0552	BY-PASS PIPE	65104340		●	●	●	●				●	●	●	●									
0557	PIPE	60001366						●	●	●				●	●	●							
0560	CLIP Ø 10	65104260		●	●	●	●				●	●	●	●									
0562	CLIP D:18	65104259		●	●	●	●				●	●	●	●									
0581	O-RING 17.96X2.62	65104337		●	●	●	●				●	●	●	●									
0583	O-RING 15.54X2.62	65104325		●	●	●	●				●	●	●	●									
0585	O-RING 17.04X3.53	65104262		●	●	●	●				●	●	●	●									
0588	EXCHANGER GASKET	65104334		●	●	●	●				●	●	●	●									
0589	SHEET GASKET D: 24-14-1.5	60061855-17						●	●	●				●	●	●							
0600	RETURN GROUP																						
0601	RETURN GROUP	65104335		●	●	●	●				●	●	●	●									
0602	LOW PRESSURE SWITCH	65105090		●	●	●	●				●	●	●	●									
	PRESSURE SWITCH (PROPORTIONAL)	65104321				●						●											
0603	TEMPERATURE PROBE + CLIP	990686-01		●	●	●	●				●	●	●	●									
0604	PUMP 5M PWM ENER+	60001947	ENER +								●	●	●	●									
	PUMP 6M 2V WILO	60000591	WILO	●	●	●	●																
	PUMP YONOS	60002375	WILO			●						●											
0605	MOTOR (3-WAY VALVE)	61302483-01		●	●	●	●				●	●	●	●									
0606	SENSOR (REED)	65104323		●	●	●	●				●	●	●	●									
0607	FLOW METER	65104317		●	●	●	●				●	●	●	●									
0610	MOTOR + SPRING 3 WAY VALVE KIT	60001583-01		●	●	●	●				●	●	●	●									
0612	PLUG	65104377		●	●	●	●				●	●	●	●									
0613	RIDUCTORS (KIT)	65104318		●	●	●	●				●	●	●	●									
0614	AUTO AIR VENT ENER+	65112086	ENER +								●	●	●	●									
	AUTO AIR VENT WITH O-RING WILO	65104703	WILO	●	●	●	●					●											
0615	KIT DRAIN SCREW	60001385		●	●	●	●				●	●	●	●									
0616	WATER FILTER	60001372		●	●	●	●				●	●	●	●									
0617	GROMMET	61010109		●	●	●	●				●	●	●	●									
0619	CHECK VALVE CARTRIDGE	65105323		●	●	●	●				●	●	●	●									
0620	FILLING TAP KIT	65114261		●	●	●	●				●	●	●	●									
0650	PIPE (10 LTS EXPANSION VESSEL-AR)	65114174				●						●											
	PIPE (EXPANSION VESSEL)	65104253		●	●	●	●				●	●	●	●									
0651	PIPE (C.H. RETURN)	65111903		●	●	●	●				●	●	●	●									
0660	CLIP Ø 10	65104260		●	●	●	●				●	●	●	●									
0661	CLIP	65104332		●	●	●	●				●	●	●	●									
0663	U-CLIP	65104704		●	●	●	●				●	●	●	●									
0664	CLIP	65104322		●	●	●	●				●	●	●	●									
0665	CLIP	65104331		●	●	●	●				●	●	●	●									
0666	CLIP	60000309		●	●	●	●				●	●	●	●									
0667	CLIP	65100680		●	●	●	●				●	●	●	●									
0668	CLIP	65104316		●	●	●	●				●	●	●	●									
0669	CLIP	65104339		●	●	●	●				●	●	●	●									
0680	GASKET 3/8»	573521		●	●	●	●				●	●	●	●									
0681	O-RING 9.19X2.62	65104313		●	●	●	●				●	●	●	●									
0682	O-RING 17.04X3.53	65104262		●	●	●	●				●	●	●	●									
0683	O-RING 23.47X2.62	65104315		●	●	●	●				●	●	●	●									
0684	O-RING 3X35 EPDM 75 SH	65104705		●	●	●	●				●	●	●	●									
0685	O-RING 7.65X1.78	65104329		●	●	●	●				●	●	●	●									
0686	O-RING 15.54X2.62	65104325		●	●	●	●				●	●	●	●									
0687	O-RING 5.7X1.9	61009834-10		●	●	●	●				●	●	●	●									
0688	O-RING 21.89X2.62	65104320		●	●	●	●				●	●	●	●									
0689	O-RING 17.17X1.78	65104303		●	●	●	●				●	●	●	●									
0690	O-RING 8.9X2.7	61009834-14		●	●	●	●				●	●	●	●									
0691	O-RING 17.86X2.62	61308091		●	●	●	●				●	●	●	●									



5001
 Transf. gaz
 Conv. gas
 Trasn. gas
 Transf. gas
> G31
 (LPG - GPL)

5002
 Transf. gaz
 Conv. gas
 Trasn. gas
 Transf. gas
> G20
 (NAT - MET)

5020
 Options
 Accessories
 Opzioni
 Accessorio

5023

5024

WIFI

☉⇒	Description	Manf. Pt. N	Type	<div style="display: flex; justify-content: space-between; font-size: 8px; text-align: center;"> CLAS PREM. EVO 24 CLAS PREM. EVO 30 CLAS PREM. EVO L 30 CLAS PREM. EVO L 35 CLAS PREM. EVO SYS. 18 CLAS PREM. EVO SYS. 24 CLAS PREM. EVO SYS. 35 CLAS PREM. EVO 24 EU CLAS PREM. EVO 30 EU CLAS PREM. EVO L 30 EU CLAS PREM. EVO L 35 EU CLAS PREM. EVO SYS. 18 EU CLAS PREM. EVO SYS. 24 EU CLAS PREM. EVO SYS. 35 EU </div>																		From	to
				1	2	3	4	5	6	7	8	9	10	11	12	13	14	15	16	17	18		
0800	ELECTRICAL BOX																						
0801	FUSE 250V 2A	61003456		●	●	●	●	●	●	●	●	●	●	●	●								
0806	PUSH	65104228		●	●	●	●	●	●	●	●	●	●	●	●								
0807	IGNITER	60001871		●	●	●	●	●	●	●	●	●	●	●	●								
0809	INSPECTION COVER	60001618		●	●	●	●	●	●	●	●	●	●	●	●								
0814	CONTROL PANEL	60001616-01		●	●	●	●	●	●	●	●	●	●	●	●								
0815	P.C.B. (MAIN)	60001898-04			●																		
	P.C.B. (MAIN)	60001899-02		●	●	●	●	●	●	●	●	●	●	●	●								
0816	P.C.B. (DISPLAY)	65111883-02		●	●	●	●	●	●	●	●	●	●	●	●								
0823	KNOB	65111928		●	●	●	●	●	●	●	●	●	●	●	●								
0824	CONTROL PANEL COVER (REAR)	60001617		●	●	●	●	●	●	●	●	●	●	●	●								
0825	PRESSURE GAUGE	65104234		●	●	●	●	●	●	●	●	●	●	●	●								
0851	FRONT CONTROL PANEL COMPLETE	65111892		●	●	●	●	●	●	●	●	●	●	●	●								
	FRONT CONTROL PANEL COMPLETE	65111893						●	●	●				●	●	●							
0856	CABLE CLAMP	65103377		●	●	●	●	●	●	●	●	●	●	●	●								
0879	BOILER THERMISTOR TEMP. SENSOR	60000454						●	●	●				●	●	●							
0880	3-WAY VALVE CABLE	60001621		●	●	●	●	●	●	●	●	●	●	●	●								
	CABLE (IGNITION ELECTRODE)	60000527		●	●	●	●	●	●	●	●	●	●	●	●								
	CABLE (IONIZATION ELECTRODE)	60001883		●	●	●	●	●	●	●	●	●	●	●	●								
	DISPLAY WIRING - 5 WIRES BLUES	60000746		●	●	●	●	●	●	●	●	●	●	●	●								
	EARTH WIRE	65104286		●	●	●	●	●	●	●	●	●	●	●	●								
	FAN CABLE	60001624		●	●	●	●	●	●	●	●	●	●	●	●								
	FEEDER 240V	60001619		●	●	●	●	●	●	●	●	●	●	●	●								
	FLOW METER - PRESSURE SENSOR CABLE	60001620		●	●	●	●	●	●	●	●	●	●	●	●								
	GAS VALVE CABLE	60001622		●	●	●	●	●	●	●	●	●	●	●	●								
	IGNITOR CABLE	60001894		●	●	●	●	●	●	●	●	●	●	●	●								
	NTC PROBE - NTC EXCHANGER	60001901		●	●	●	●	●	●	●	●	●	●	●	●								
	PUMP 2V CABLE 6M WILO	65109585	WILO	●	●	●	●	●	●	●													
	PUMP CABLE 1V ENER+	60001887	ENER +							●	●	●	●	●	●								
	PUMP CABLE YONOS	60002376	WILO			●					●												
0881	CONNECTOR 2P	65111933		●	●	●	●	●	●	●	●	●	●	●	●								
	CONNECTOR 3P (x5)	65111934-01		●	●	●	●	●	●	●	●	●	●	●	●								
0900	JIG PLATE & PIPE FITTING																						
0903	HOT WATER CONNECTION	60000891		●	●	●	●	●	●	●	●	●	●	●	●								
0904	GAS SERVICE TAP UNION	60000898		●	●	●	●	●	●	●	●	●	●	●	●								
	UNION	65105631		●	●	●	●	●	●	●	●	●	●	●	●								
0905	COLD WATER TAP	60000895		●	●	●	●	●	●	●	●	●	●	●	●								
0906	WATER FLOW & RETURN SERVI. TAP	60000885		●	●	●	●	●	●	●	●	●	●	●	●								
0910	WALL HOOK	60000625		●	●	●	●	●	●	●	●	●	●	●	●								
0917	SHEET GASKET D: 24-17-1.5	60061855-19		●	●	●	●	●	●	●	●	●	●	●	●								
0939	SHEET GASKET D: 16.5-11-1.5	60061854-14		●	●	●	●	●	●	●	●	●	●	●	●								
5000	ACCESSORIES																						
5001	BURNER JET FULL KIT G31 12-38 KW	60001946-01		●	●	●	●	●	●	●	●	●	●	●	●								
5002	BURNER JET FULL KIT G20 12-38 KW	60002785		●	●	●	●	●	●	●	●	●	●	●	●								
5020	SUBSTITUTION KIT GRAPHITE+SPRING	60001298		●	●	●	●	●	●	●	●	●	●	●	●								
5023	P.C.B. CONNECTOR	65112042									●	●											
	SYSTEM INTERFACE	65112083-04									●	●											
	WALL PLATE	65112824									●	●											
5024	CONNECTIVITY WIFI	65116231									●	●											
	COVER (AR)	65116083									●	●											
	WALL PLATE	65116082									●	●											

LIST OF THE ABBREVIATIONS

HW	: Hot water.
CW	: Cold water.
C	: Ceramic resistance (normal heating).
Ca	: Ceramic resistance (accelerated heating)
TP	: Immersion heater.
1F	: With fittings.
2F	: Without fittings.
3F	: With fittings and another outlet connection.
AMI	: With mixing valve.
SMI	: Without mixing valve.
PUISS	: Power of th appliance.
PN	: Appliance with normal pression.
LP	: Appliance with low pression.
PV	: Appliance with variable power.
PF	: Appliance with fixed power.

IDENTIFICATION PLATE

SERIAL NUMBER

10 Characters :

04 05 125 011
 Year of manufacture Manufacturing day Sequential number

11 Characters :

1 95 065004 - 31
 Month of manufacture : Technical number of the appliance
 from 1 to 9 → Jan. to Sep.,
 O → Oct., N → Nov.,
 D → Dec. Sequential number
 Year of manufacture

19 Characters :

08 05 0013199 900640031
 Year of manufacture Product reference
 Month of manufacture Sequential number

20 Characters :

3675007 XX 2 07 070 00315
 Product reference Sequential number
 Millenium of manufacture Manufacturing day
 Year of manufacture

21 Characters :

3675007 XX 07 070 0000315
 Product reference Sequential number
 Year of manufacture Manufacturing day