



SPARE PARTS EXPLODED VIEW
GAS-WALL CONDENSING BOILERS
Model
CLAS PREMIUM EVO

R8203424-01 - 10/05/2016

CLAS PREMIUM EVO

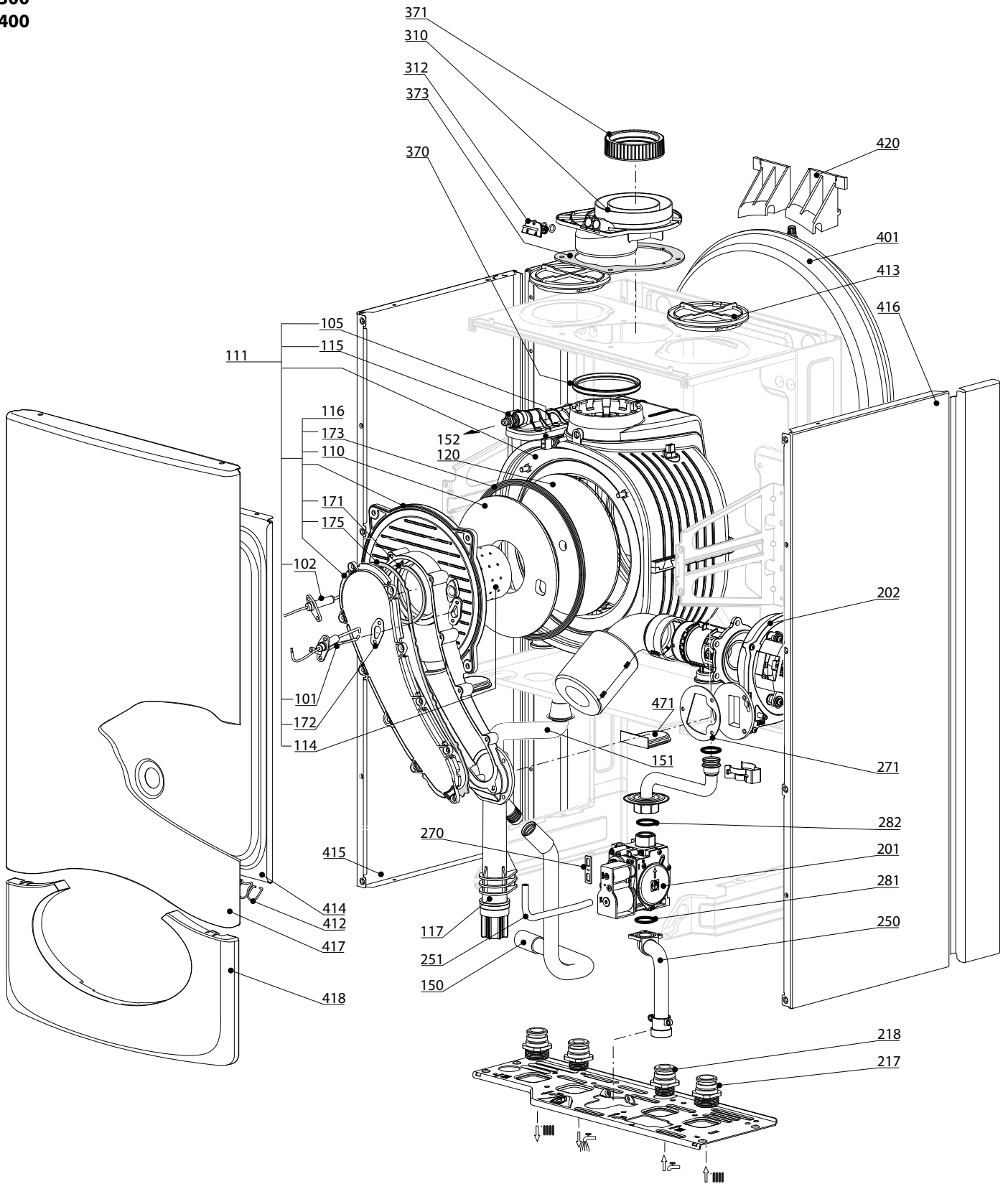
Gas-wall condensing boilers

1	3300685	CLAS PREMIUM EVO 30 FR	10-2014	10-2015
Col	Reference	Model type	Begin	End

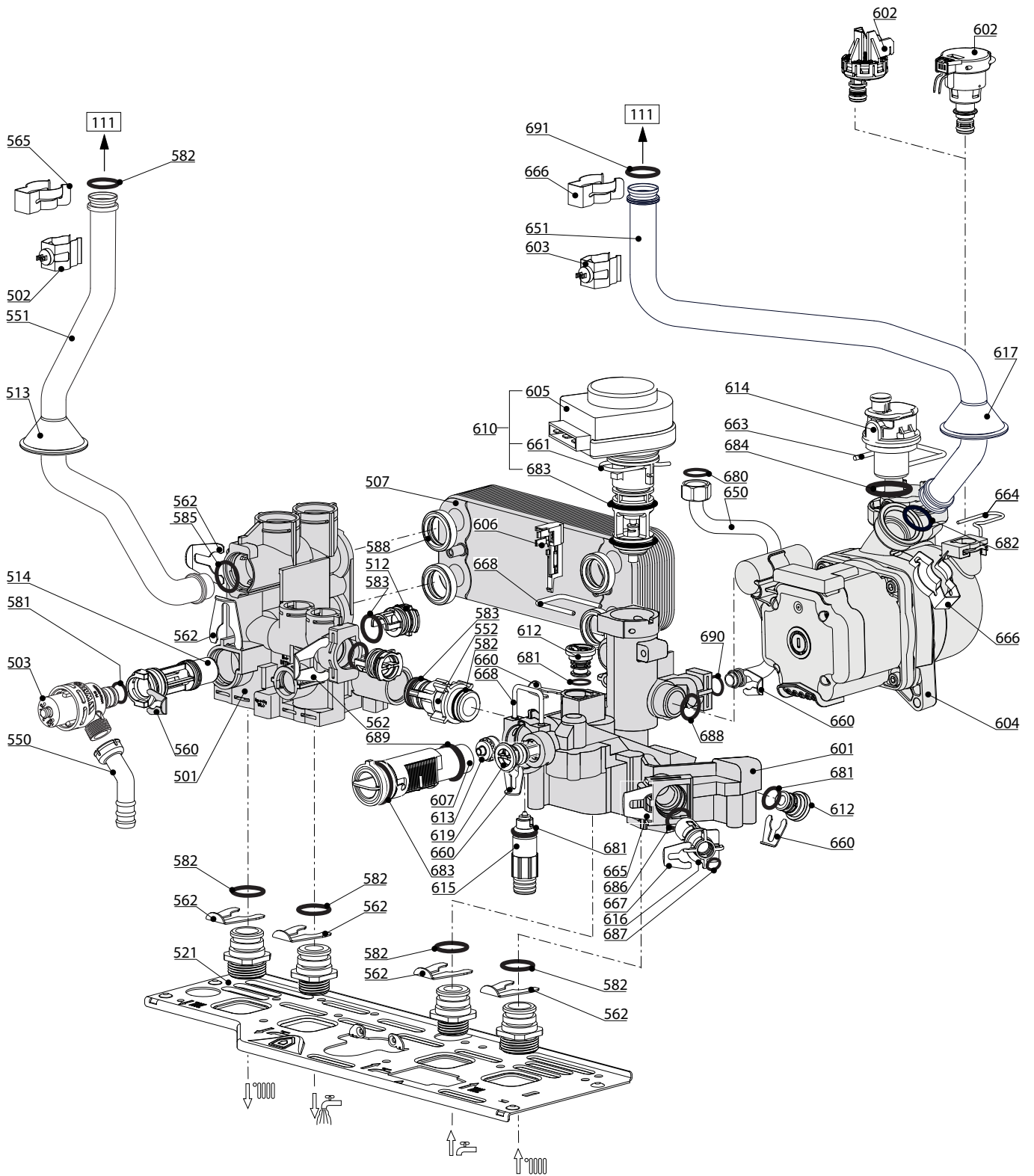
100
200
300
400

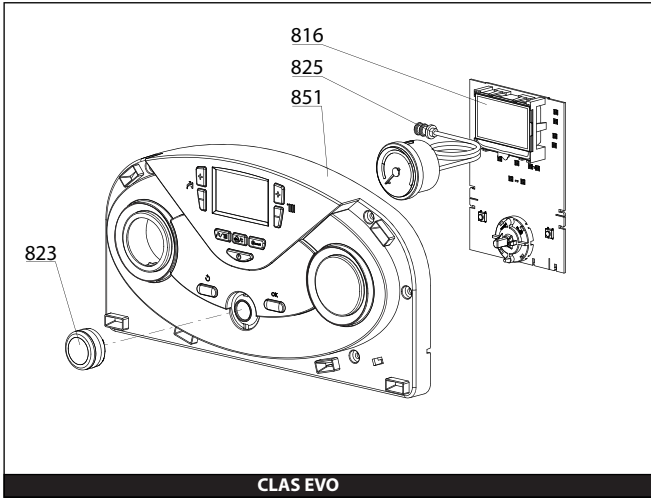
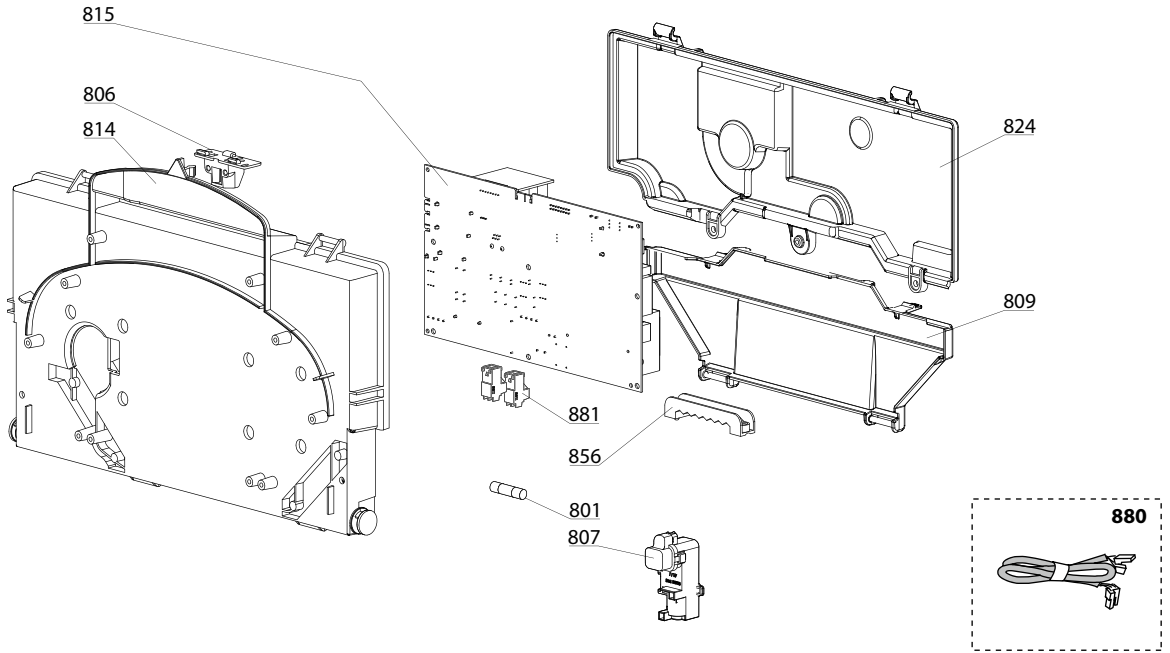
CLAS PREMIUM EVO

Gas-wall condensing boilers

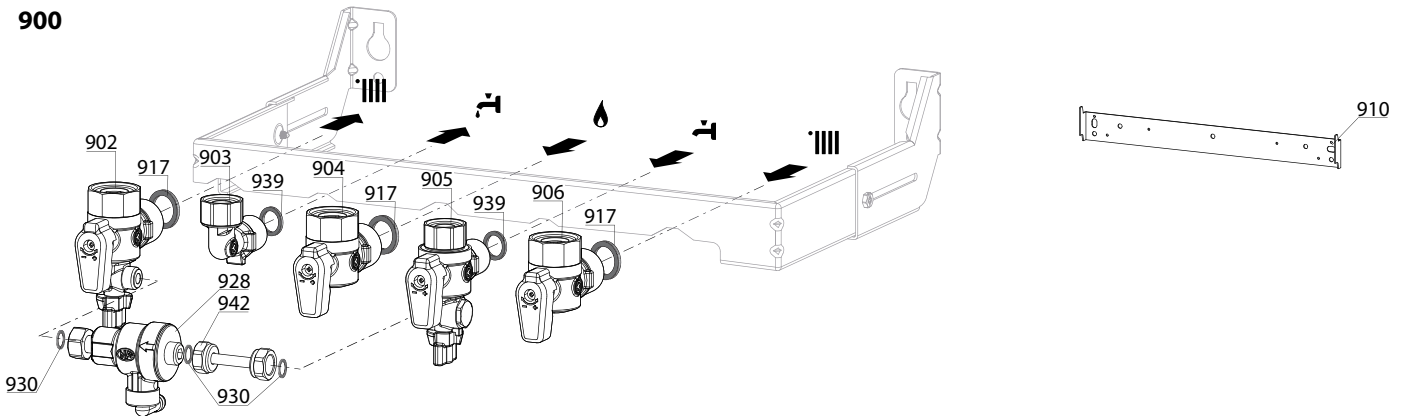


Mixer AL* (2012 -> 2016)	Mixer PA* (2016 -> ...)
<p>211 208 282 213 282</p>	<p>211 286 209 261 283 282</p>
* Aluminum - Aluminium - Alluminio - Aluminio	* Polyamide black, noir - Poliammide nero - Poliamida negro





900



5000

5001
 Transf. gaz
 Conv. gas
 Trsf. gas
 Transf. gas
 > **G31**
 (LPG - GPL)

5002
 Transf. gaz
 Conv. gas
 Trsf. gas
 Transf. gas
 > **G20**
 (NAT - MET)

5020
 Options
 Accessories
 Opzioni
 Accessorio

CLAS PREMIUM EVO 30

☉⇒	Description	Manf. Pt. N	Type	CLAS PREMIUM EVO 30																	
				1	2	3	4	5	6	7	8	9	10	11	12	13	14	15	16	17	18
0800	ELECTRICAL BOX																				
0801	FUSE 250V 2A	61003456		•																	
0806	PUSH	65104228		•																	
0807	IGNITER	60001871		•																	
0809	INSPECTION COVER	60001618		•																	
0814	CONTROL PANEL	60001616-01		•																	
0815	P.C.B. (MAIN)	60001899-02		•																	
0816	P.C.B. (DISPLAY)	65111883-02		•																	
0823	KNOB	65111928		•																	
0824	CONTROL PANEL COVER (REAR)	60001617		•																	
0825	PRESSURE GAUGE	65104234		•																	
0851	FRONT CONTROL PANEL COMPLETE	65111892		•																	
0856	CABLE CLAMP	65103377		•																	
0880	3-WAY VALVE CABLE	60001621		•																	
	CABLE (IGNITION ELECTRODE)	60000527		•																	
	CABLE (IONIZATION ELECTRODE)	60001883		•																	
	DISPLAY WIRING - 5 WIRES BLUES	60000746		•																	
	EARTH WIRE	65104286		•																	
	FAN CABLE	60001624		•																	
	FEEDER 240V	60001619		•																	
	FLOW METER - PRESSURE SENSOR CABLE	60001620		•																	
	GAS VALVE CABLE	60001622		•																	
	IGNITOR CABLE	60001894		•																	
	NTC PROBE - NTC EXCHANGER	60001901		•																	
	PUMP 2V CABLE 6M WILO	65109585	WILO	•																	
0881	CONNECTOR 2P	65111933		•																	
	CONNECTOR 3P (x5)	65111934-01		•																	
0900	JIG PLATE & PIPE FITTING																				
0902	WATER FLOW SERVICE TAP	60000886		•																	
0903	HOT WATER CONNECTION	60000891		•																	
0904	GAS SERVICE TAP	60000898		•																	
0905	COLD WATER TAP	60000894		•																	
0906	WATER FLOW & RETURN SERVI. TAP	60000885		•																	
0910	WALL HOOK	60000625		•																	
0917	SHEET GASKET D: 24-17-1.5	60061855-19		•																	
0928	DISCONNECTOR	60000881		•																	
0930	SHEET GASKET D: 11-5-1.5	60061853-07		•																	
0939	SHEET GASKET D: 16.5-11-1.5	60061854-14		•																	
0942	FILLER NECK	60001078		•																	
5000	ACCESSORIES																				
5001	BURNER JET FULL KIT G31 12-38 KW	60001946-01		•																	
5002	BURNER JET FULL KIT G20 12-38 KW	60002785		•																	
5020	SUBSTITUTION KIT GRAPHITE+SPRING	60001298		•																	

CLAS PREMIUM EVO

Gas-wall condensing boilers

LIST OF THE ABBREVIATIONS

HW	: Hot water.
CW	: Cold water.
C	: Ceramic resistance (normal heating).
Ca	: Ceramic resistance (accelerated heating)
TP	: Immersion heater.
1F	: With fittings.
2F	: Without fittings.
3F	: With fittings and another outlet connection.
AMI	: With mixing valve.
SMI	: Without mixing valve.
PUISS	: Power of th appliance.
PN	: Appliance with normal pression.
LP	: Appliance with low pression.
PV	: Appliance with variable power.
PF	: Appliance with fixed power.

IDENTIFICATION PLATE

SERIAL NUMBER

10 Characters :	04 05 125 011		
		Sequential number	
		Manufacturing day	
		Year of manufacture	
11 Characters :	1 95 065004 - 31		
Month of manufacture :		Technical number of the appliance	
from 1 to 9 → Jan. to Sep.,		Sequential number	
O → Oct., N → Nov.,		Year of manufacture	
D → Dec.			
19 Characters :	08 05 0013199 900640031		
Year of manufacture		Product reference	
Month of manufacture		Sequential number	
20 Characters :	3675007 XX 2 07 070 00315		
Product reference		Sequential number	
Millenium of manufacture		Manufacturing day	
		Year of manufacture	
21 Characters :	3675007 XX 07 070 0000315		
Product reference		Sequential number	
Year of manufacture		Manufacturing day	