

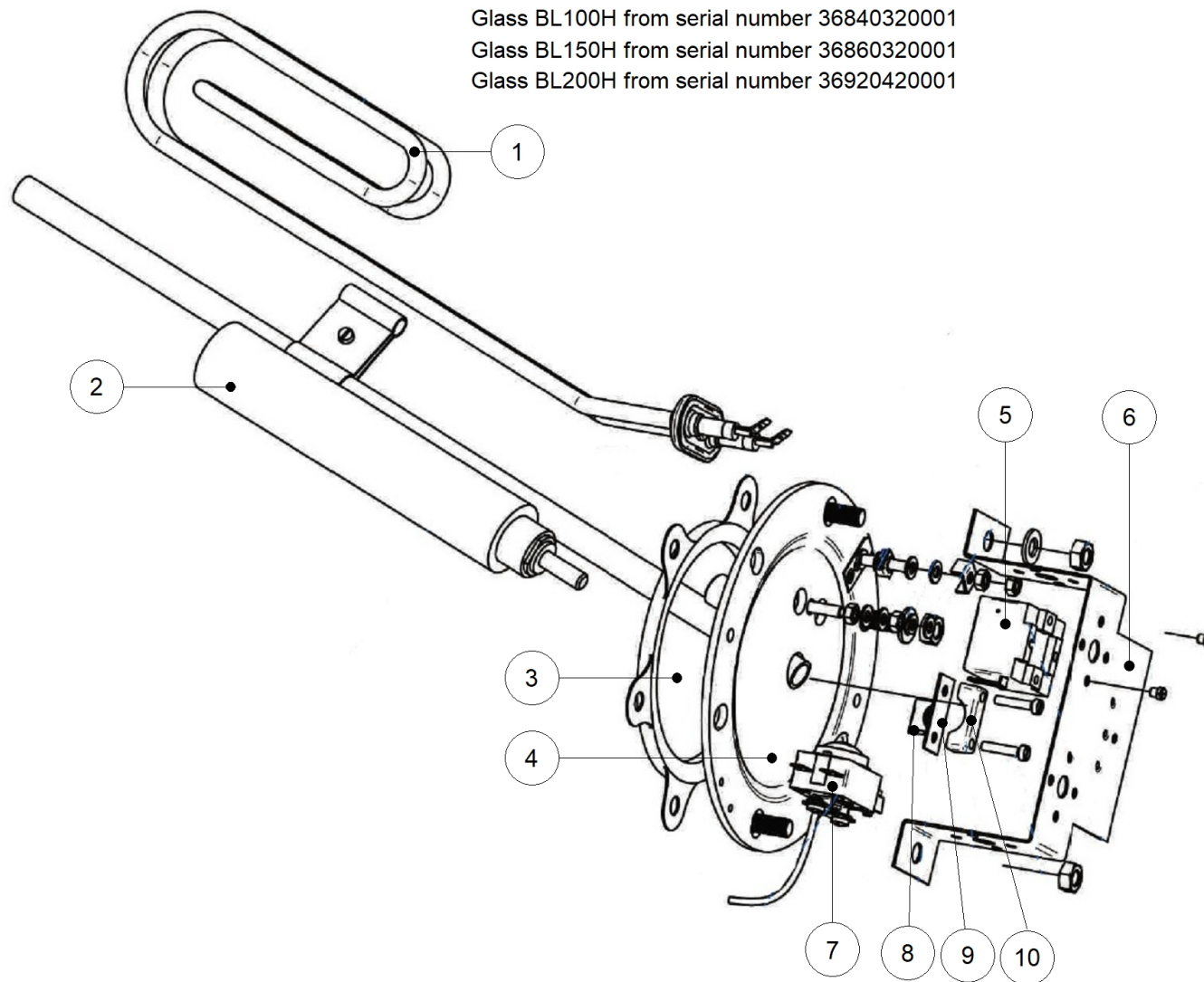
Glass BL (wall H since 2021)

These spare parts are meant for Glass BL...H starting from these serial numbers

Glass BL100H from serial number 36840320001








Glass BL150H from serial number 36860320001

Glass BL200H from serial number 36920420001





Glass BL (wall H since 2021)

	Code	Code GA	Quant.	Photo	Description	De --- A ---
1	90032037	785362	1		Resist.chauff.BL-H 1200W Glass	01-01-21-
1	90033007	785364	1		Resist.chauff.BL-H 1800W Glass	01-01-21-
1	90033010	785365	1		Resist.chauff.BL-H 2400W Glass	01-01-21-
2	052871	052871	1		Anode (D33x207mm) + joint en Glass	01-01-21-
2	90021033	785358	1		Anode (32x270)+joint Glass150-200-300	01-01-21-
2	90042787	785373	1		Anode (32x160)+joint Glass 50-75-100	01-01-21-
3	90027044	785360	1		Joint de bride emboutie Glass	01-01-21-
4	052879	052879	1		Glass BL. Bride H	01-01-21-
5	052866	052866	1		Glass BL. H Thermostat WY65F	01-01-21-
6	052865	052865	1		Glass BL. Thermostat H et plaque de maintien de découpe thermique	01-01-21-
7	052870	052870	1		Glass BL. H Découpe thermique 93°C	01-01-21-
8	052869	052869	1		Glass BL. H Plaque d'acier de maintien	01-01-21-
9	052868	052868	1		Glass BL. H Plaque isolante électrique	01-01-21-
10	052867	052867	1		Glass BL. Pince de câble H	01-01-21-