

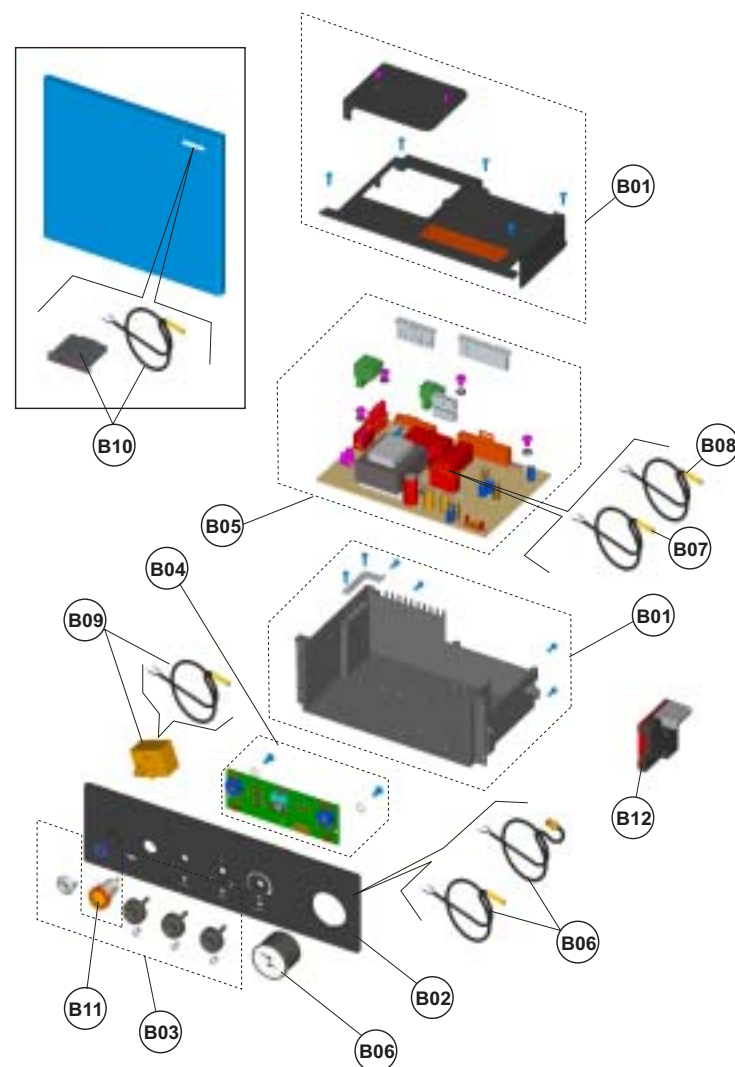
**ERA F 32 BS 90** Cod. **00906350**

CABLAGGIO

**TAV. 1277**

2Luglio 2005

Pag.2



Pos.	Codice	Denominazione
B01	F398D0930	KIT SCATOLA EL. "Lej" (35009980)
B02	F398D2830	KIT FRONTALE "Lam" (35011110)
B03	F398D0960	KIT MANOPOLE "Lej" (35010550)
B04	F398D0990	KIT SCHEDA POT. "Lej" (36507650)
B05	F398D1000	KIT SCHEDA EL. "Lej" (36507661)
B06	F398D0970	KIT T/IDR.4bar "Lej" (36400570)
B07	F398D1340	KIT Sonda TEMP. "Lej" (36200660)
B08	F398D1080	KIT Sonda RISC. "Lej" (36200670)
B09	F398D0980	KIT TST.LS1 RM "Lej" (36401240)
B10	F398D2940	KIT TERM.RETT. "Lej" (36400880)
B11	F398D0950	KIT PULS.SPIA "Lej" (36100420)
B12	F398D1230	KIT CENTRALINA "Lej" (36507820)

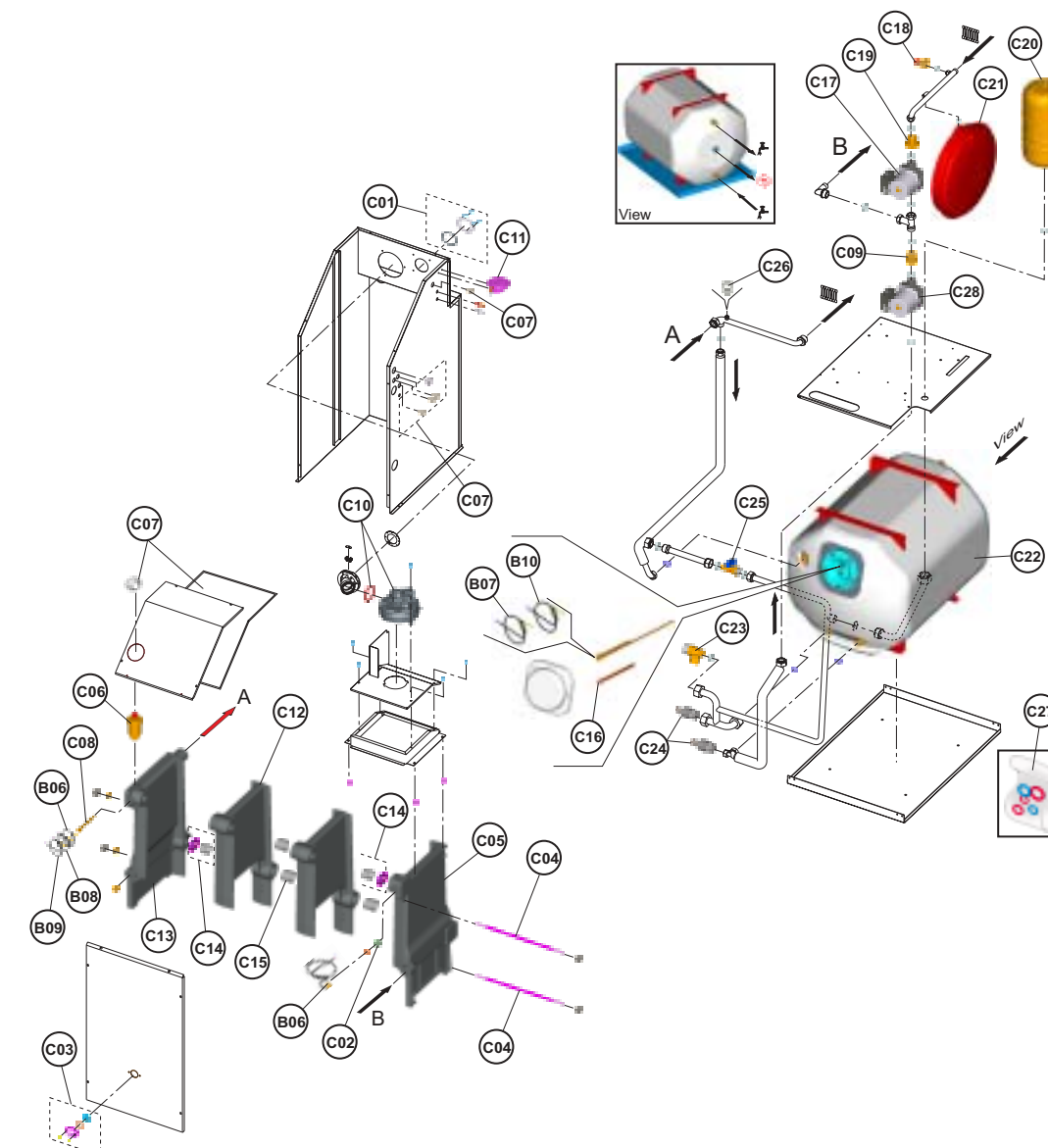
**ERA F 32 BS 90** Cod. **00906350**

G/ACQUA

**TAV. 1277**

Luglio 2005

Pag.3



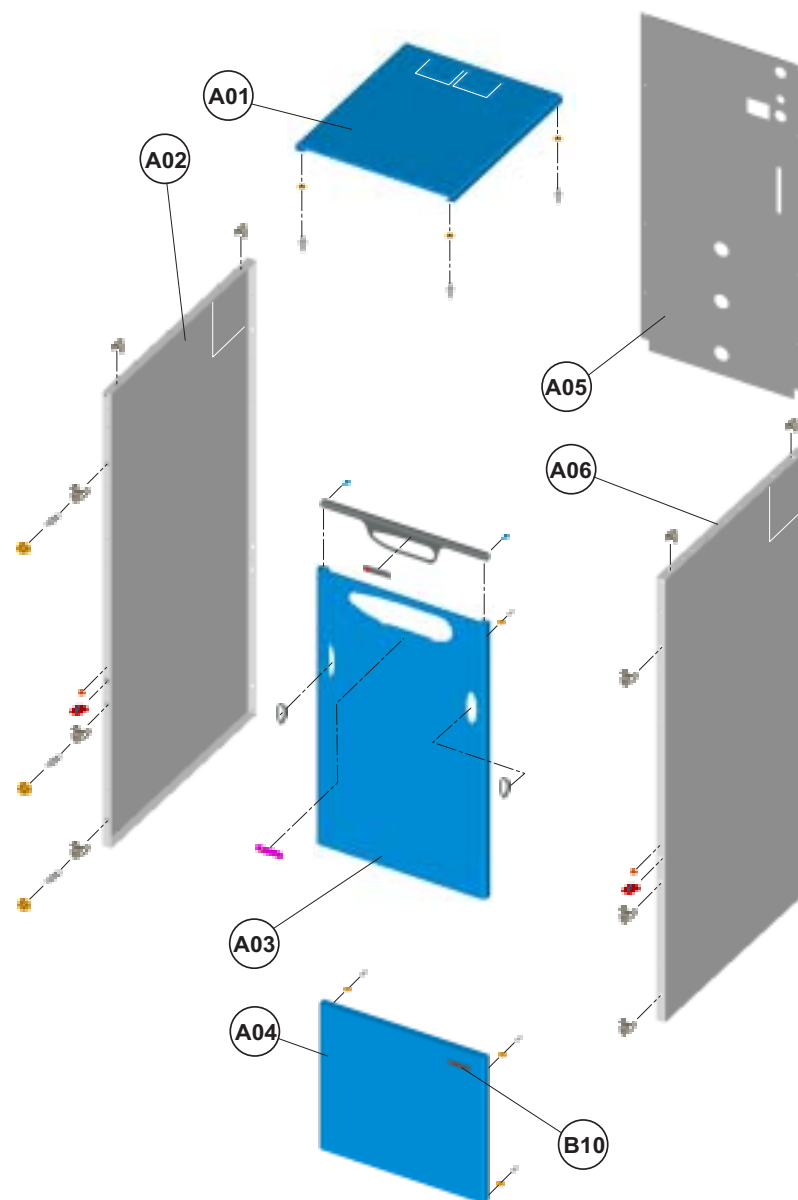
Pos.	Codice	Denominazione
B06	F398D0970	KIT T/IDR.4bar "Lej" (36400570)
B07	F398D1340	KIT Sonda TEMP. "Lej" (36200660)
B08	F398D1080	KIT Sonda RISC. "Lej" (36200670)
B09	F398D0980	KIT TST.LS1 RM "Lej" (36401240)
B10	F398D2940	KIT TERM.RETT. "Lej" (36400880)
C01	F398D1250	KIT DIAFR.ARIA "Lej" (32916090)
C02	F398D1010	KIT V/RITEGNO "Lej" (36901140)
C03	F398D1240	KIT VETRO SPIA "Lej" (35315240)
C04	F398D1070	KIT TIR.M10X330 "Lej" (34401240)
C05	F398D1020	KIT ELEM.DEX. "Lej" (39403150)
C06	F398D1130	KIT V/ARIA 1/2 "Lej" (36900240)
C07	F398D1100	KIT PASSACAVI "Lej" (36505380)
C08	F398D1090	KIT GUAINA 1/2 "Lej" (33400070)
C09	F398D1330	KIT VALV. N/R "Lej" (36901970)
C10	F398D1140	KIT VENTIL. "Lej" (36601780)
C11	F398D1150	KIT PRESS.ARIA "Lej" (36401620)
C12	F398D1030	KIT ELEM.INT. "Lej" (39403190)

Pos.	Codice	Denominazione
C13	F398D1040	KIT ELEM.SIN. "Lej" (39403160)
C14	F398D1060	KIT BIC. + DIAFR. "Lej" (37902790)
C15	F398D1050	KIT BICONO "Lej" (34218521)
C16	F398D2680	KIT ANODO MAGN. "Lej" (32301810)
C17	F398D2920	KIT POMPA "Lej" (36601461)
C18	F398D0220	KIT V/SIC.1/2" "Lej" (36900660)
C19	F398D2150	KIT VALV.N/R "Lej" (36900390)
C20	F398D2930	KIT VASO 3Lt. "Lej" (36802970)
C21	F398D0180	KIT VASO 10Lt. "Lej" (36802740)
C22	F398D2670	KIT BOILER 90L. "Lej" (37704760)
C23	F398D1380	KIT V/SIC.7bar "Lej" (36900110)
C24	F398D2590	KIT RUBIN. 1/2 "Lej" (36902010)
C25	F398D0160	KIT RUBIN.3/8" "Lej" (36901470)
C26	F398D1480	KIT V/ARIA 1/4 "Lej" (36900210)
C27	F398D0850	KIT GUARNIZ.H2O "Lej" (3/8">1")
C28	F398D2860	KIT POMPA "Lej" (36601471)

**ERA F 32 BS 90** Cod. **00906350**

MANTELLATURA

TAV. 1277

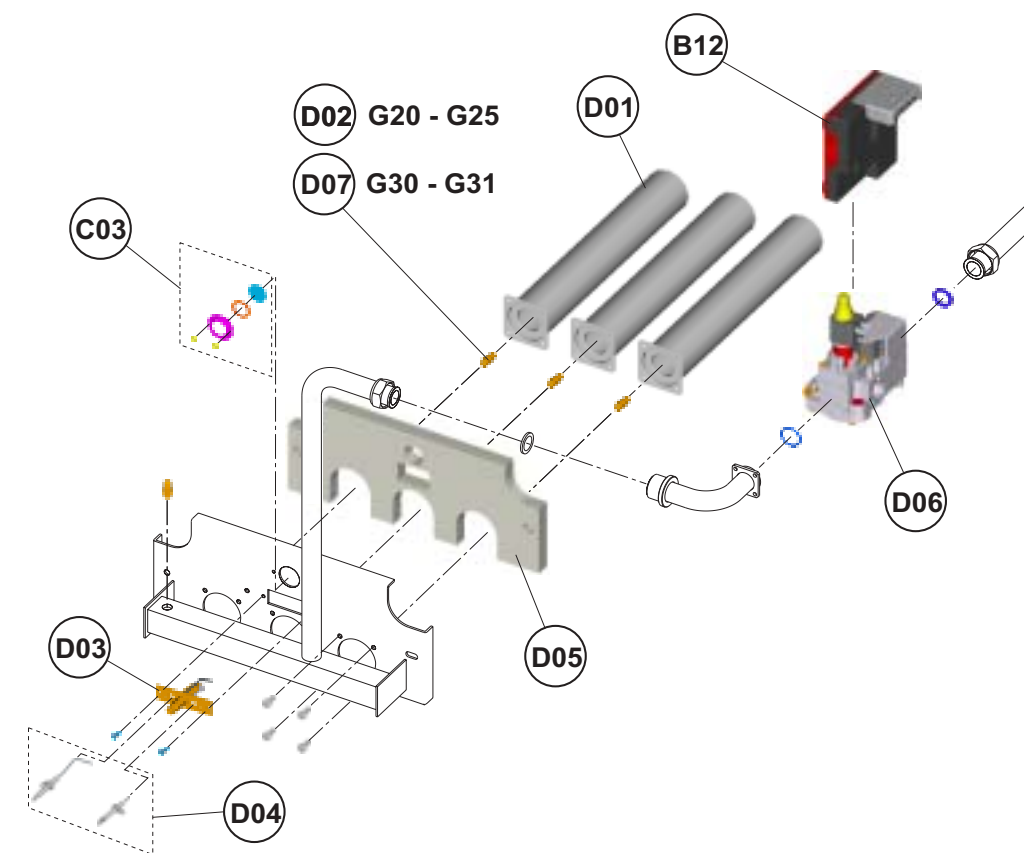
 Luglio 2005  
 Pag.1


Pos.	Codice	Denominazione
A01	F398D2900	KIT COPERCHIO "Lam" (31118070)
A02	F398D2890	KIT FIANCO SIN. "Lam" (31118030)
A03	F398D2810	KIT PANN.A.SUP. "Lam" (31114030)
A04	F398D2820	KIT PANN.A.INF. "Lam" (31114040)
A05	F398D2910	KIT PARETE POST. "Lej" (31118050)
A06	F398D2880	KIT FIANCO DEX. "Lam" (31118010)
B10	F398D2940	KIT TERM.RETT. "Lej" (36400880)

**ERA F 32 BS 90** Cod. **00906350**

G/GAS

TAV. 1277

 Luglio 2005  
 Pag.4


Pos.	Codice	Denominazione
D01	F398D1200	KIT BRUC.PRINC. "Lej" (37608300)
D02	F398D1210	KIT UG.GAS 2,80 "Lej" (34009090)
D03	F398D1190	KIT B/P LAV. "Lej" (36702661)
D04	F398D1180	KIT EL"Lej" (36702260-36702270)
D05	F398D1160	KIT ISOL.PORTA "Lej" (35301920)
D06	F398D1360	KIT VALV.GAS "Lej" (36800000)
D07	F398D1220	KIT UG.GAS 1,75 "Lej" (34013040)