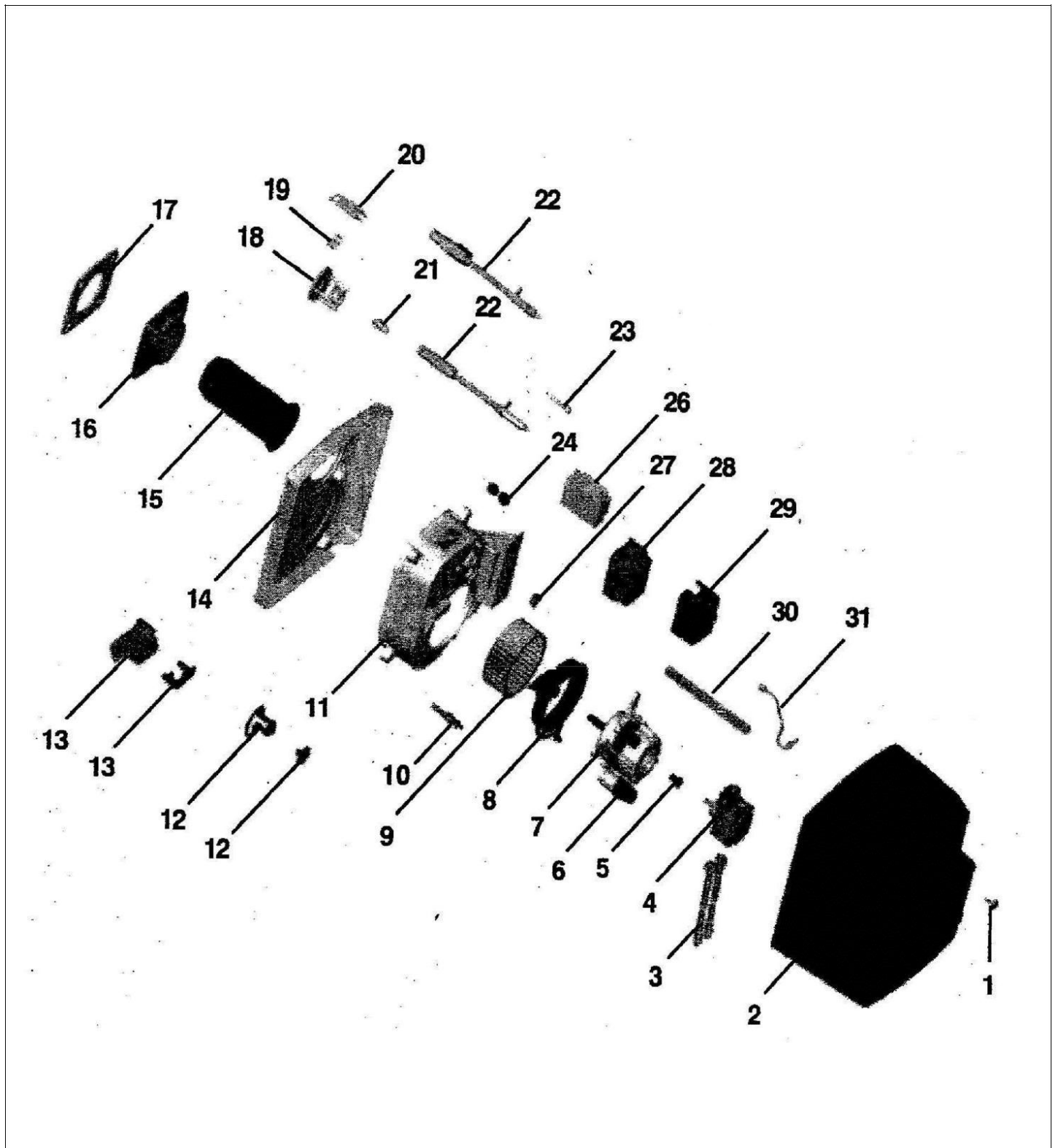


Pièces détachées

Vue Principale





BRULEURS FIOUL

HELIS MI700

| Réf. | Référence | Description | Qté | | |
|------|-----------|---------------------------------------|-------|---|--|
| 1 | S58808258 | VIS FIXATION CAPOT | 1 | | |
| 2 | S58083794 | CAPOT CF700/CF900 CHAPPEE | 1 | | |
| 3 | S58366626 | FLEXIBLE ST6 MG 1/4 90°-FC 3/8 | 1 | | |
| 4 | S58329157 | POMPE BFP21 L3 (071N0295) | 1 | | |
| 5 | S58409946 | ACCOUPEMENT AEG (NOIR) | 1 | | |
| 6 | S58209868 | CONDENSATEUR AEG | 1 | | |
| 7 | S58084361 | MOTEUR AEG COMPLET | 1 | | |
| 8 | S58119380 | OEILLARD BRULEUR EUROPEEN | 1 | | |
| 9 | S58409954 | TURBINE FERGAS KNA-E 133x52 R N3 12,7 | 1 | | |
| 10 | S58539896 | CELLULE QRB1A A014U25B | 1 | | |
| 11 | S58084123 | VOLUTE ARRIERE | 1 | | |
| 12 | S58084362 | ENS.BOUTON DE CLAPET | 1 | | |
| 12 | S58084362 | ENS.BOUTON DE CLAPET | 1 | | |
| 13 | S58084131 | ENS.CLAPET D'AIR | 1 | | |
| 13 | S58084131 | ENS.CLAPET D'AIR | 1 | | |
| 14 | S58083796 | PLAQUE AVANT BRULEUR 700/900 | 1 | | |
| 15 | S58119397 | TUYERE | 1 | | |
| 16 | S58119394 | BRIDE BRULEUR TYPE 500 | 1 | | |
| 17 | S58390115 | JOINT PLAQUE DE FACADE | 1 | | |
| 18 | S58090007 | S/E COUPELLE/CENTREUR BR.700 | 1 | | |
| 19 | S58084518 | RESSORT ELECTRODES + VIS | 80000 | 1 | |
| 20 | S58528435 | BLOC D'ELECTRODES BR.500/700 | 1 | | |
| 21 | S50032400 | GICLEUR DELAVAN 0,65G 60°CT B(BF) | 1 | | |
| 21 | S50032399 | GICLEUR DELAVAN 0,60G 60°CT B(BF) | 1 | | |
| 21 | S50032404 | GICLEUR DELAVAN 1,00G 60°CT B(BF) | 1 | | |
| 21 | S50033127 | GICLEUR DELAVAN 0,55G 60°B | 1 | | |
| 21 | S50032402 | GICLEUR DELAVAN 0,85G 60°CT B(BF) | 1 | | |
| 21 | S50032406 | GICLEUR DELAVAN 1,25G 60°CT B(BF) | 1 | | |
| 21 | S50032405 | GICLEUR DELAVAN 1,10G 60°CT B(BF) | 1 | | |
| 21 | S50032403 | GICLEUR DELAVAN 0,90G 60°CT B(BF) | 1 | | |
| 21 | S50032401 | GICLEUR DELAVAN 0,75G 60°CT B(BF) | 1 | | |
| 22 | S58083790 | LIGNE FIOUL NON RECHAUFFEE | 1 | | |
| 22 | S58083790 | LIGNE FIOUL NON RECHAUFFEE | 1 | | |
| 22 | S58348031 | LIGNE FIOUL RECHAUF.FPBH 5 030 2083 | 1 | | |
| 22 | S58348031 | LIGNE FIOUL RECHAUF.FPBH 5 030 2083 | 1 | | |
| 23 | S58083795 | ENS.VIS REGLAGE LIGNE+EPINGLE | 1 | | |
| 24 | S58589995 | PASSE FIL HT | 1 | | |
| 25 | S58083792 | FIL HT - 817 PENET. STANDARD | 1 | | |
| 26 | S58504244 | TRANSFORMATEUR EBI DANFOSS 052F0030 | 1 | | |
| 27 | S58518511 | BOUCHON KAPSTO - NON RECHAUFFE | 1 | | |
| 27 | S58589976 | PASSE FIL DE RECHAUFFEUR | 1 | | |
| 28 | S58539895 | SOCLE AGC11.40101 CI-NON RECH | 1 | | |
| 28 | S58539894 | SOCLE AGC11.50501 CI-RECHAUFFE | 1 | | |
| 29 | S58539893 | BLOC ACTIF LMO14 (ref:111B2) | 1 | | |
| 30 | S58808356 | ENTRETOISE DE FIXATION CAPOT | 1 | | |
| 31 | S58716675 | TUBULURE POMPE LIGNE BR.700 | 1 | | |