

MURAL

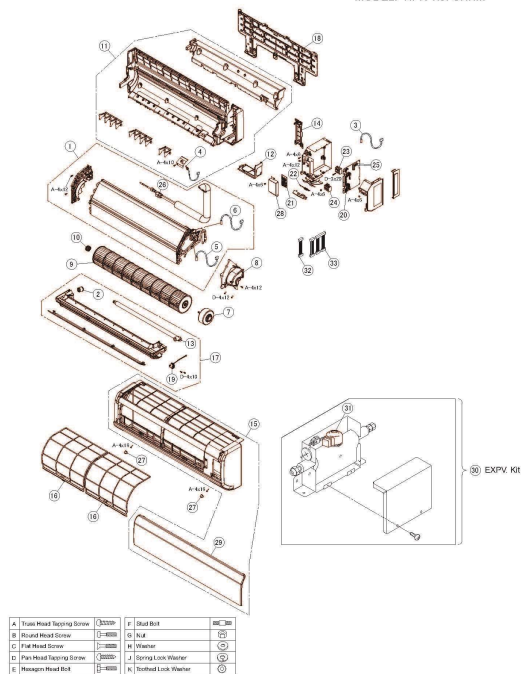
RPK-1.5FSRHM

Pièces détachées

Main view

LOCATION OF SERVICE PARTS IN THE UNIT

MODEL: RPK-1.5FSRHM



- 10 -

Rep. Référence

Description

Qté

Remarques

MURAL

RPK-1.5FSRHM

1	P31915	HEAT EXCHANGER	1	
2	P27062	Drain Cap	1	
3	P24016	THERMISTOR	1	THM1 for Air Inlet
4	P29626	Thermistor Air Outlet	1	THM2 for Air Outlet
5	P29628	Thermistor Freeze Protection	1	THM3 for Freeze Protection
6	P29627	Thermistor THM5 for Gas Line	1	THM5 for Gas Line
7	P29608	Fan Motor	1	DC, 38W
8	P29609	Motor Clamp	1	
9	P29611	Fan	1	
10	P26601	BEARING	1	
11	P29613	Bottom Base	1	
12	P29614	Corner Cover	1	
13	P29615	Drain Hose	1	
14	P29616	Pipe Cover	1	
15	P29637	Cabinet Panel Assy	1	Including part No. 29 Flat Panel
16	P31600	FILTER	2	
17	P29622	Drain Pan Assy	1	
18	P29623	Plate	1	
19	P29624	As Motor	1	for Auto Swing Louver
20	P31924	PCB-S	1	PI-151-S for Control
21	P31925	PCB-S	1	for Switch
22	P29625	PCB-S	1	for Receiver with Indicator
23	P26616	TERMINAL BLOCK	1	for Power Source Circuit
24	P26618	TERMINAL BLOCK	1	for Control Circuit
25	P27957	FUSE	2	Fuse on PI-151-S, 5A
26	R4226	Flare Nut	1	12.7
27	P29629	Screw Cap	2	
28	P29709	SWITCH COVER	1	
29	P29700	FLAT PANEL	1	with "HITACHI" Logo
30	P29781	EXPANSION VALVE	1	Fujikoki Corporation, PAM-B40YGHS-1
31	P29630	Motor for ExPV	1	Included in part No. 30 EXPV. Kit
32	P31757	CODE	1	for No.22 PCB-S