

MURAL

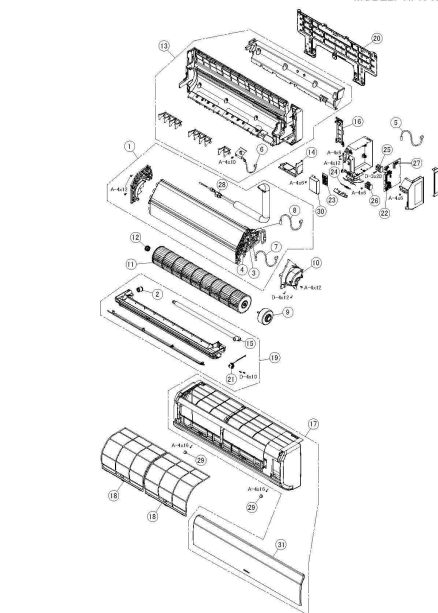
RPK-1.5FSN4M

Pièces détachées

Main view

LOCATION OF SERVICE PARTS IN THE UNIT

MODEL: RPK-1.5FSN4M



A	Truss Head Tapping Screw	3-10mm	F	Ball Nut	HC-3M
B	Round Head Screw	3-10mm	G	Nut	(2)
C	Flat Head Screw	3-10mm	H	Washer	(2)
D	Flat Head Tapping Screw	3-10mm	J	Spring Lock Washer	(2)
E	Hexagon Head Bolt	3-10mm	K	Notched Lock Washer	(2)

NOTE:
The parts without order number are the custom-ordered, and these are not mentioned in the price list.
When ordering them, the part name and the drawing number are required.
Contact your HITACHI distributor for the delivery date and price about them.

NOTE:
The parts without order number are the custom-ordered, and these are not mentioned in the price list.
When ordering them, the part name and the drawing number are required.
Contact your HITACHI distributor for the delivery date and price about them.

© 2018 Hitachi-Johnson Controls Air-Conditioning, Inc.

- 4 -

Rep.	Référence	Description	Qté	Remarques
------	-----------	-------------	-----	-----------

MURAL

RPK-1.5FSN4M

1	P31725	HEAT EXCHANGER	1	
2	P27062	Drain Cap	1	
3	P28701	EXPANSION VALVE	1	Fujikoki Corporation, PAM-B40YGHS-1
4	P29630	Motor for ExPV	1	Fujikoki Corporation, PAM-MD12HS-11
5	P24016	THERMISTOR	1	THM1 for Air Inlet
6	P29626	Thermistor Air Outlet	1	THM2 for Air Outlet
7	P29628	Thermistor Freeze Protection	1	THM3 for Freeze Protection
8	P29627	Thermistor THM5 for Gas Line	1	THM5 for Gas Line
9	P29608	Fan Motor	1	DC, 38W
10	P29609	Motor Clamp	1	
11	P29611	Fan	1	
12	P26601	BEARING	1	
13	P29613	Bottom Base	1	
14	P29614	Corner Cover	1	
15	P29615	Drain Hose	1	
16	P29616	Pipe Cover	1	
17	P29637	Cabinet Panel Assy	1	Including part No.31 Flat Panel
18	P31600	FILTER	2	
19	P29622	Drain Pan Assy	1	
20	P29623	Plate	1	
21	P29624	As Motor	1	for Auto Swing Louver
22	P31924	PCB-S	1	PI-151-S for Control
23	P31925	PCB-S	1	for Switch
24	P29625	PCB-S	1	for Receiver with Indicator
25	P26616	TERMINAL BLOCK	1	for Power Source Circuit
26	P26618	TERMINAL BLOCK	1	for Control Circuit
27	P27957	FUSE	2	Fuse on PI-151-S, 5A
28	R4226	Flare Nut	1	12.7
29	P29629	Screw Cap	2	
30	P29709	SWITCH COVER	1	
31	P29700	FLAT PANEL	1	with "HITACHI" Logo