

SPARE PARTS EXPLODED VIEW GAS BURNERS

Model

CB-NC46-61-GX2A (50/60HZ)

R8220030-02 - 01/07/2019

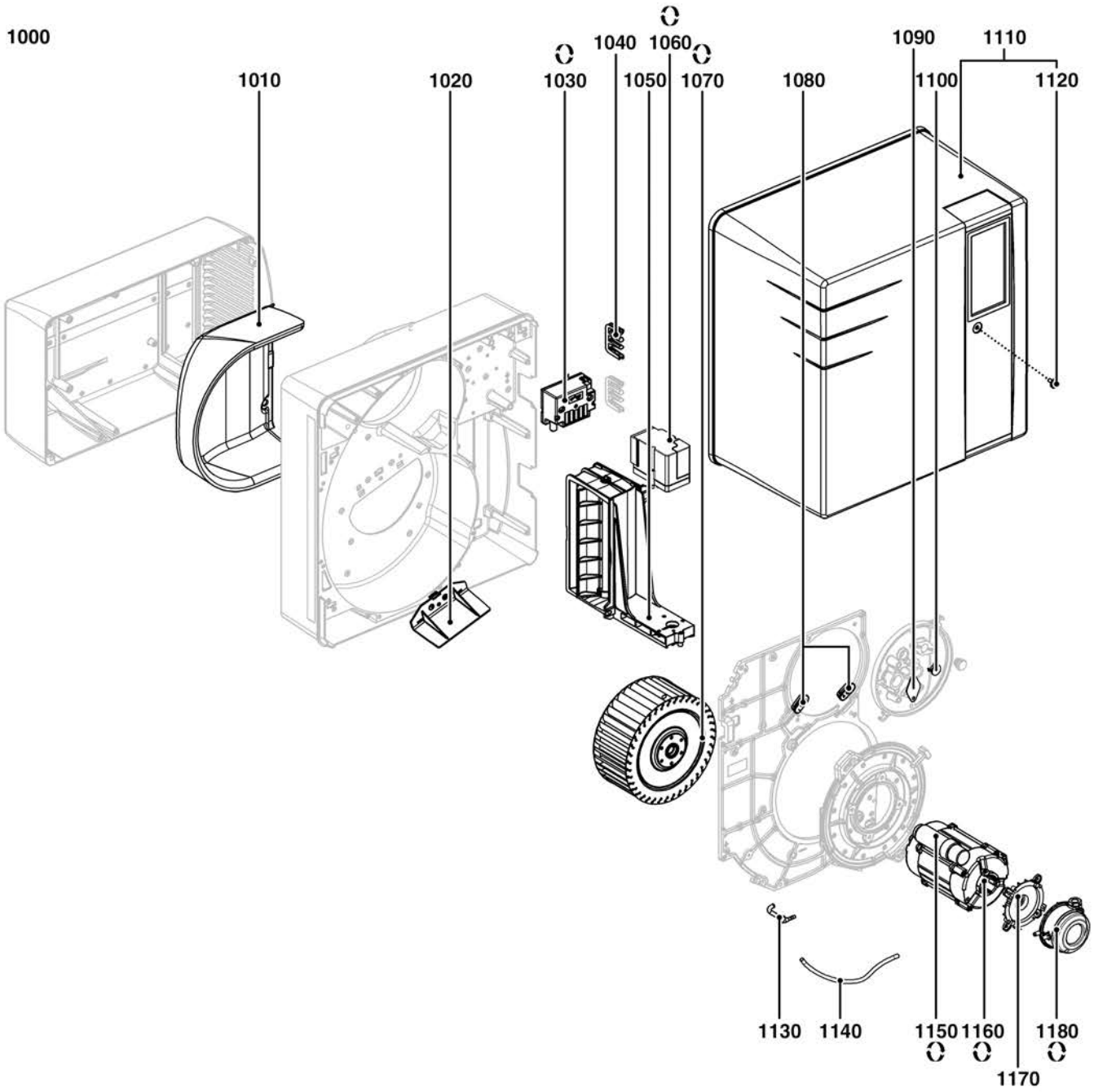
CB-NC46-61-GX2A (50/60HZ)

Gas burners

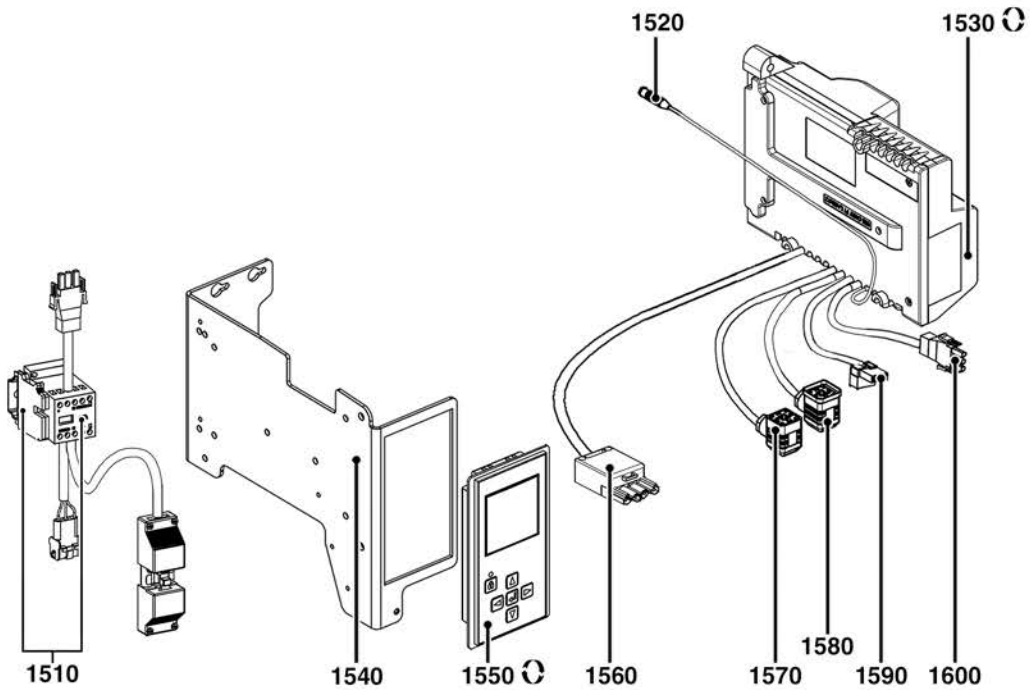
1	3833173	BB-NC46 GX207/8A	03-2011	-
2	3836540	BB-NC61 GX 207 60HZ QS /TC	04-2018	-
3	3832009	CH-G0531-T1/KN	06-2008	-
4	3833178	CH-G0531-T2/KL	01-2010	-
5	3832663	GT-D26-3/4"-RP3/4"	06-2010	-
6	3832656	GT-D25-1"1/4-RP1"1/4	06-2010	-
7	3833191	GT-D214-1"1/2"-RP2"	03-2012	-

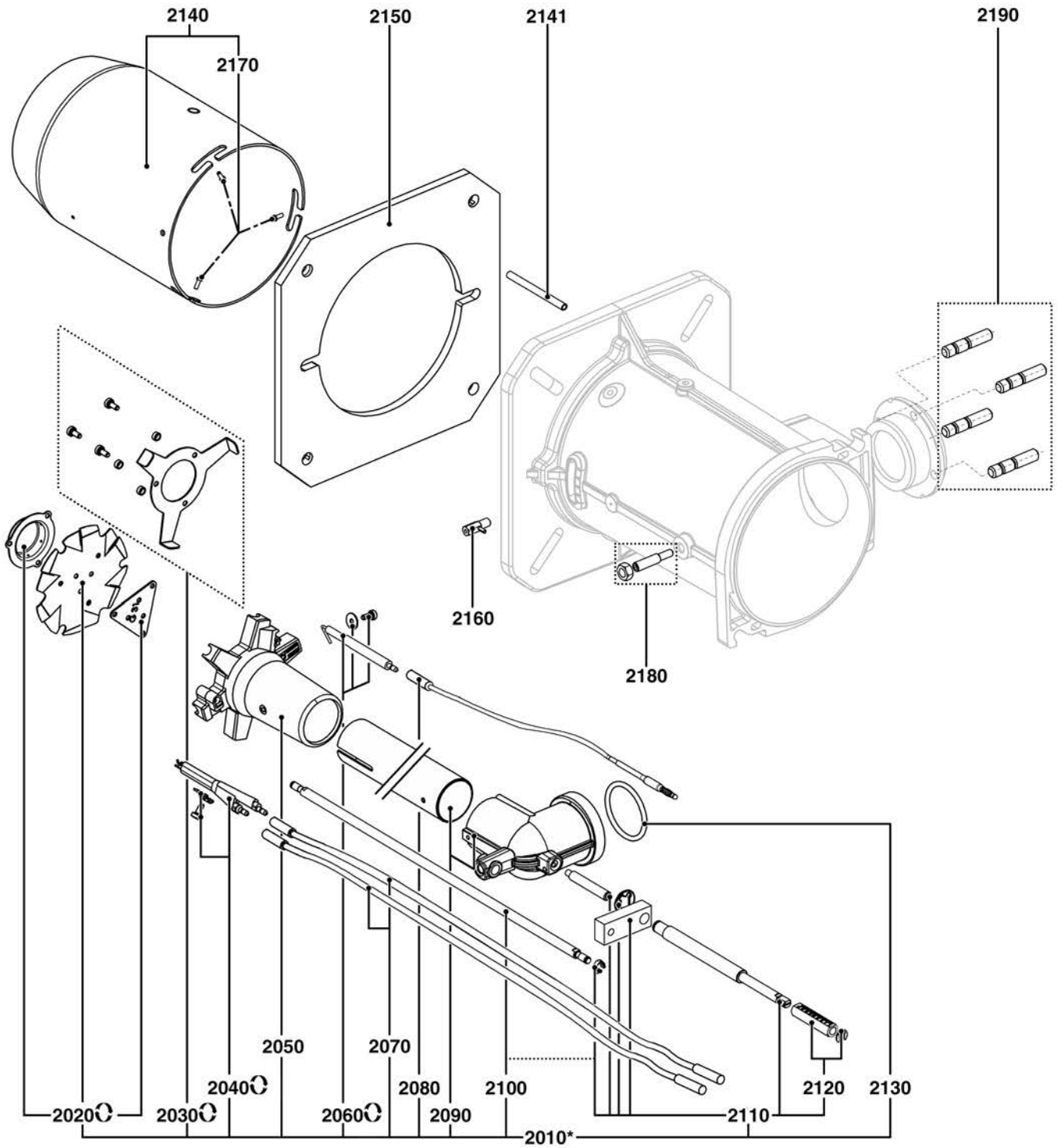
Col	Reference	Model type	Begin	End
-----	-----------	------------	-------	-----

1000



1500





☉⇒	Description	Manf. Pt. N	Type																				
				1	2	3	4	5	6	7	8	9	10	11	12	13	14	15	16	17	18	From	to
2000	COMBUSTION HEAD																						
2010	COMB.HEAD GAS L416 D100/110 CPL.	65300815					●																
	COMB.HEAD GAS L556 D100/110 CPL.	65300816						●															
2020	SET BAFFLE PLATE D100 6SL H6+NOZ.D50+CAP	13006684					●	●															
2030	PROPANE DIFFUSER	65300835					●	●															
2040	ELECTRODE BLOCK 12X46 D4 D1,2X10	65300738					●	●															
2050	GAS HEAD L107 D110/40 6 BRANCH.	13007798					●	●															
2060	IONISATION PROBE D8X80 d4 D2X27 80° F+S	13010529					●	●															
2070	IGNITION CABLE D4/D4 L850 CARBON	13020808					●	●															
2080	IONISATION CABLE MC4/D4 L650	13015121					●																
	IONISATION CABLE MC4/D4 L850	13020809						●															
2090	GAS ELBOW H57 + TUBE L317	65300817					●																
	GAS ELBOW H57 + TUBE L457	65300818						●															
2100	ADJUST ROD D6/8/6 L416+CLIPS D6	65300819					●																
	ADJUST ROD D6/8/6 L556+CLIPS D6	65300820						●															
2110	ADJUST ROD D8/12/10 L172+SPACER 45MM	65300821					●	●															
2120	ADJUST SCALE+CIRCLIPS	65300554					●	●															
2130	O-RING D45X4	13015499					●	●															
2140	FLAME TUBE D150/125/100 L277	65300822					●																
	FLAME TUBE D150/125/100 L417	65300823						●															
2141	FURNACE PRESSURE TUBE LG.200MM	65301184					●																
	FURNACE PRESSURE TUBE LG.350MM	65301185						●															
2150	GASKET/BURNER FLANGE 244X244X8 D158	13007803					●	●															
2160	FLAME TUBE ROTATION LEVER	13007802					●	●															
2170	SCREWS M6 FIX FLAME TUBE (3 PIECES)	13007804					●	●															
2180	SCREW+NUT M8X40	65300557					●	●															
2190	KIT HEXAGONAL NUT+SCREWS M10X40	13016814					●	●															

CB-NC46-61 -GX2A (50/60HZ)

Gas burners

