

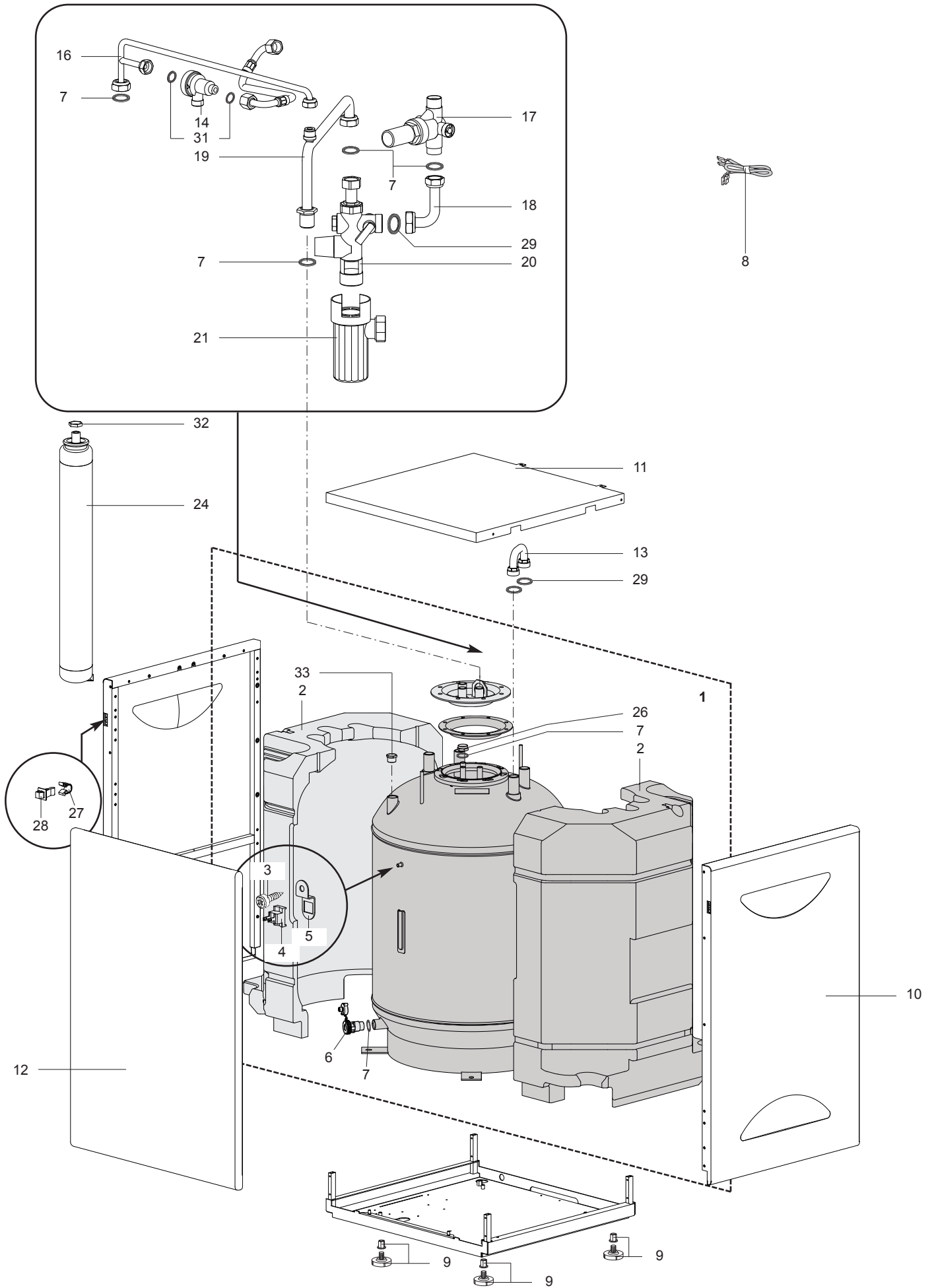
# SPARE PARTS EXPLODED VIEW BOILERS

Model

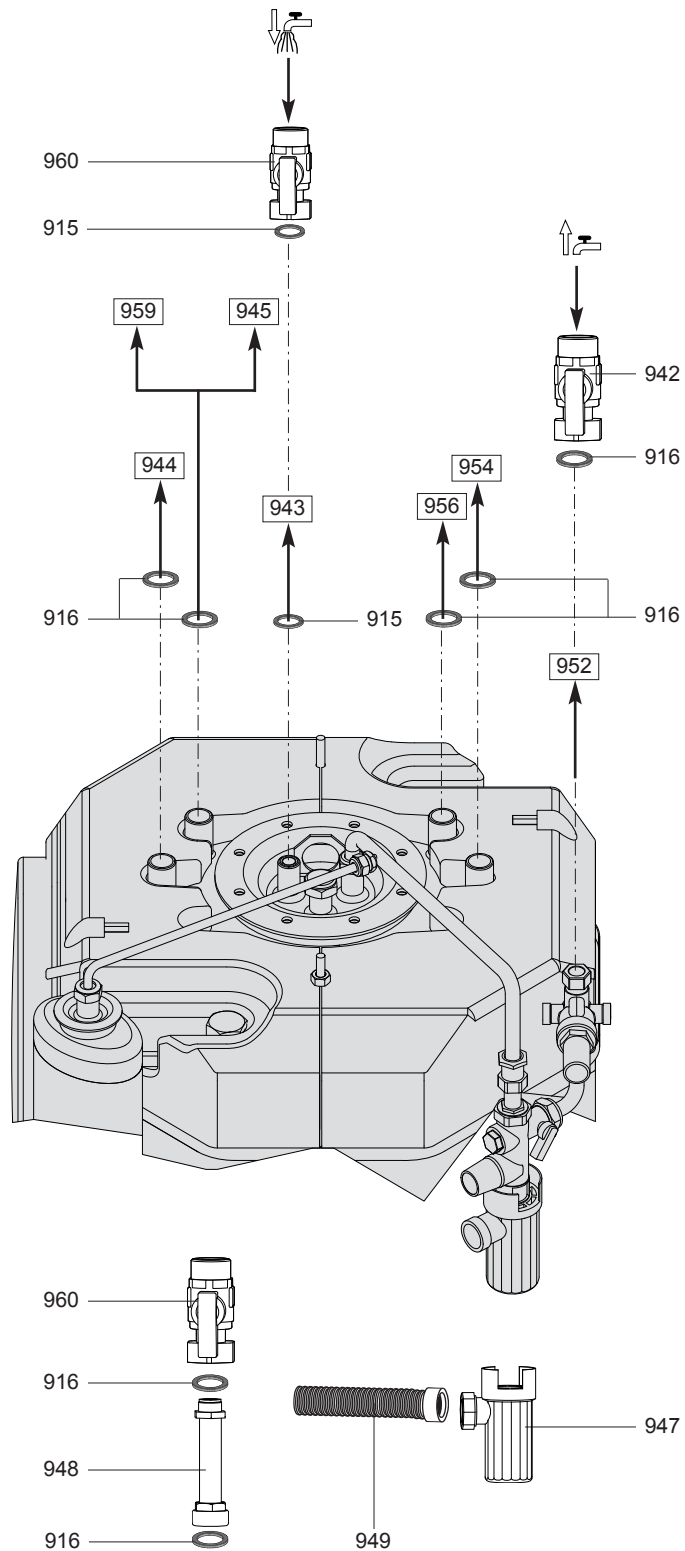
## **PHOENIX GREEN BALLON 120L**

R8215517-03 - 12/06/2012

1	3300034	PHOENIX GREEN BALLON INOX 120L	09-2005	01-2009
Col	Reference	Model type	Begin	End







☉⇒	Description	Manf. Pt. N	Type	120L																	
				1	2	3	4	5	6	7	8	9	10	11	12	13	14	15	16	17	18
0915	GASKET 1/2	573528		•																	
0916	GASKET 3/4	573520		•																	
0942	VALVE (3/4 )	65100255		•																	
0943	PIPE (D.H.W. OUTLET/LEFT)	65105287		•																	
	PIPE (D.H.W. OUTLET R.H.SIDE)	65105296		•																	
	PIPE (D.H.W. OUTLET) (COLUMN)	65105426		•																	
0944	RETURN PIPE (RIGHT)	65105286		•																	
	RETURN PIPE (R.H.SIDE)	65105295		•																	
	RETURN PIPE (COLUMN)	65105425		•																	
0945	DELIVERY PIPE	65105285		•																	
	DELIVERY PIPE (R.H.SIDE)	65105294		•																	
	DELIVERY PIPE (COLUMN)	65105424		•																	
0947	TRAP 1»	65105284		•																	
0948	GAS PIPE	65105289		•																	
0949	DISCHARGE PIPE (CONDENSATE)	65105290		•																	
0952	PIPE (COLD WATER INLET/ LEFT)	65105288		•																	
	PIPE (R.H.SIDE COLD WATER INLET)	65105297		•																	
	PIPE (COLD WATER INLET) (COLUMN)	65105427		•																	
0954	DELIVERY PIPE (L.H.SIDE SOLAR PANEL)	65105314		•																	
	DELIVERY PIPE (R.H.SIDE/SOLAR PANEL)	65105317		•																	
	DELIVERY PIPE (COLUMN + SOLAR)	65105429		•																	
0956	DELIVERY PIPE (L.H.SIDE/ TANK-SOLAR PAN.)	65105315		•																	
	DELIVERY PIPE (R.H.SIDE/TANK-SOLAR PANEL)	65105318		•																	
	DELIVERY PIPE (L.H.SIDE/TANK-SOLAR PAN.)	65105430		•																	
0959	RETURN PIPE (L.H.SIDE/ TANK-SOLAR PAN.)	65105316		•																	
	RETURN PIPE (R.H.SIDE/TANK-SOLAR PANEL)	65105319		•																	
	RETURN PIPE (L.H.SIDE/ TANK-SOLAR PAN.)	65105431		•																	
0960	GAS VALVE ASSY 3/4	65100257		•																	

## LIST OF THE ABBREVIATIONS

HW .....	: Hot water.
CW .....	: Cold water.
C .....	: Ceramic resistance (normal heating).
Ca .....	: Ceramic resistance (accelerated heating)
TP .....	: Immersion heater.
1F .....	: With fittings.
2F .....	: Without fittings.
3F .....	: With fittings and another outlet connection.
AMI .....	: With mixing valve.
SMI .....	: Without mixing valve.
PUISS .....	: Power of th appliance.
PN .....	: Appliance with normal pression.
LP .....	: Appliance with low pression.
PV .....	: Appliance with variable power.
PF .....	: Appliance with fixed power.

## IDENTIFICATION PLATE

### SERIAL NUMBER

<b>10 Characters :</b>	04 05 125 011	
		Sequential number
		Manufacturing day
		Year of manufacture
<b>11 Characters :</b>	1 95 065004 - 31	
Month of manufacture :		Technical number of the appliance
from 1 to 9 → Jan. to Sep.,		Sequential number
O → Oct., N → Nov.,		Year of manufacture
D → Dec.		
<b>19 Characters :</b>	08 05 0013199 900640031	
Year of manufacture		Product reference
Month of manufacture		Sequential number
<b>20 Characters :</b>	3675007 XX 2 07 070 00315	
Product reference		Sequential number
Millenium of manufacture		Manufacturing day
		Year of manufacture
<b>21 Characters :</b>	3675007 XX 07 070 0000315	
Product reference		Sequential number
Year of manufacture		Manufacturing day