



**ARISTON**

# SPARE PARTS EXPLODED VIEW GAS WALL BOILERS

Model

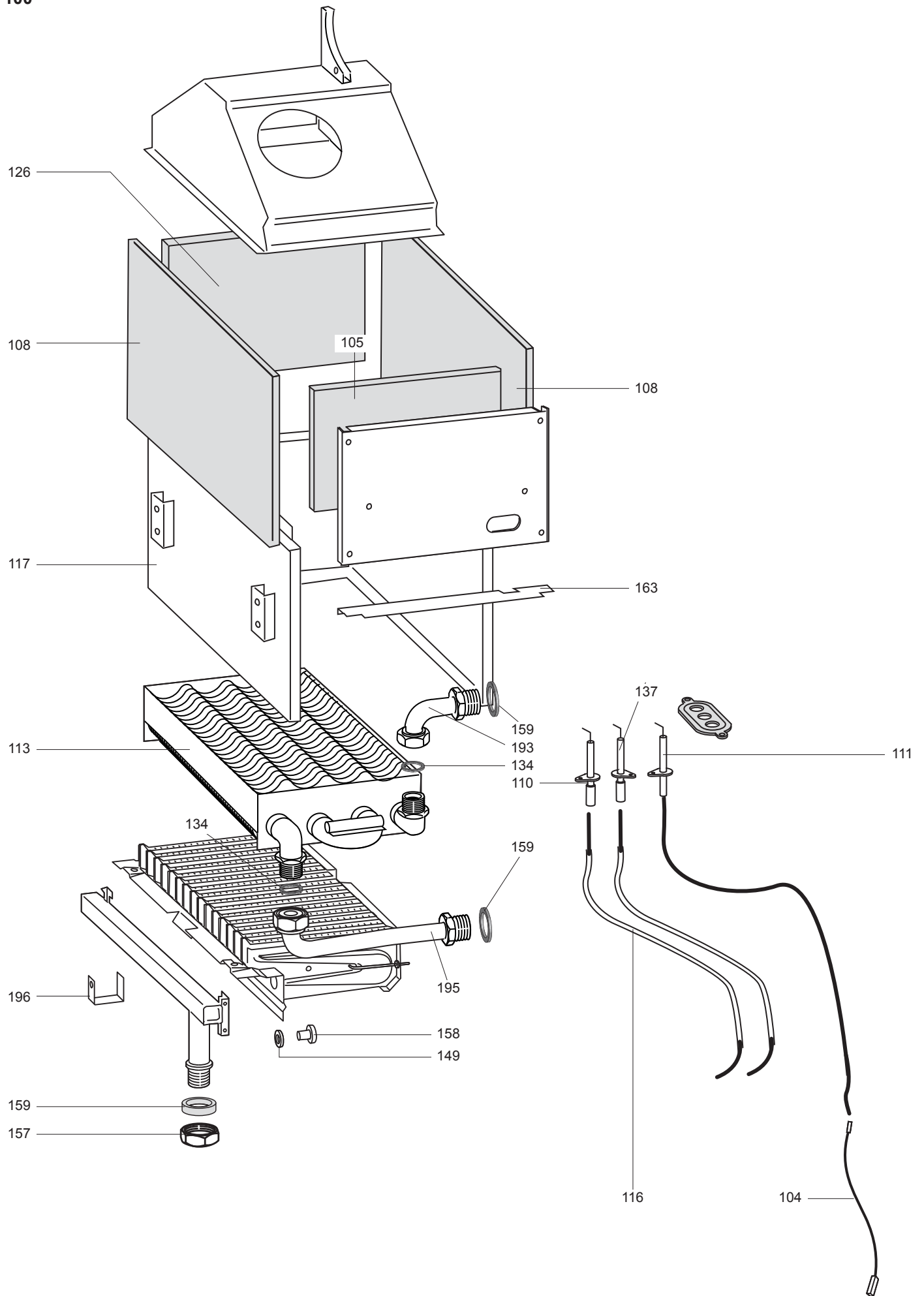
## **GENUS 27 BI/BFFI**

R8216662-02 - 30/04/2012

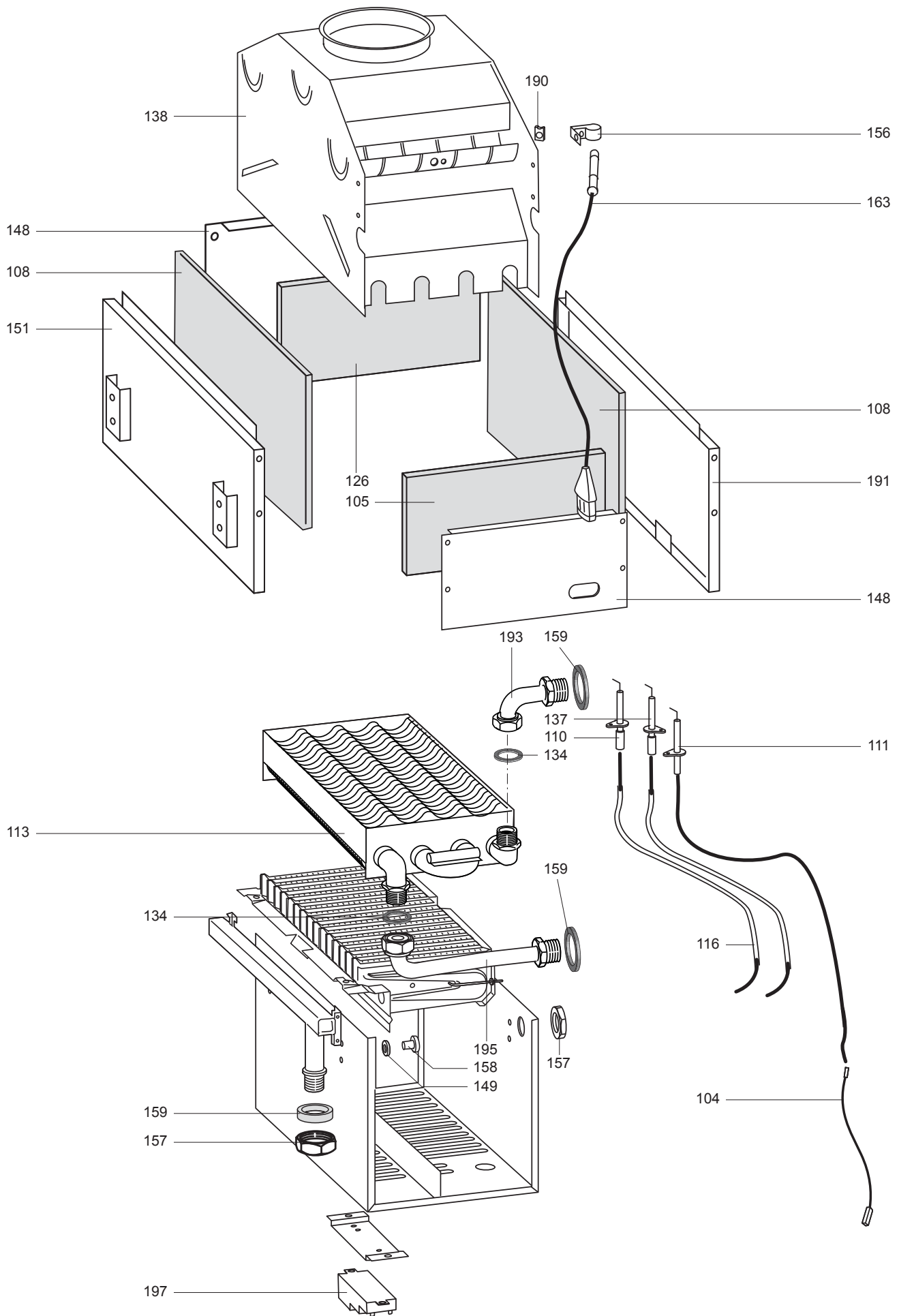
GENUS 27 BI/BFFI

Domestic Gas Boilers

1	534646	GENUS 27 BI MET FR/B	07-1997	02-2003
1	534647	GENUS 27 BI GPL FR/B	07-1997	03-2005
2	534648	GENUS 27 B FFI MET FR/B	07-1997	03-2005
2	534649	GENUS 27 B FFI GPL FR/B	07-1997	05-2005
Col	Reference	Model type	Begin	End





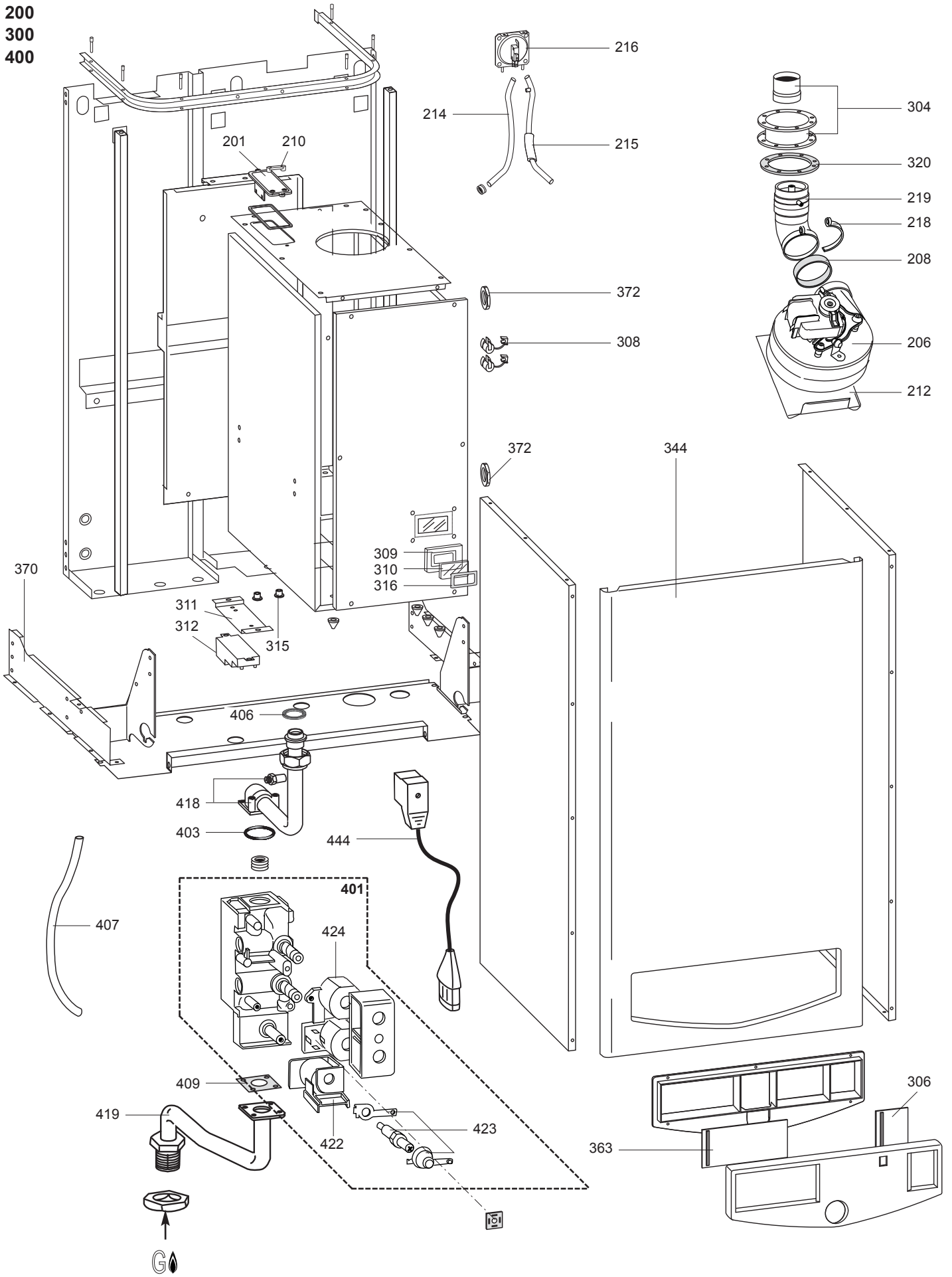


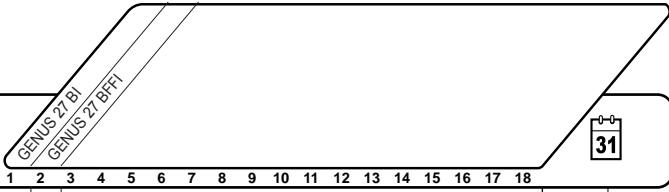
☉⇒	Description	Manf. Pt. N	Type	GENUS 27 BI GENUS 21 BFFI																	
				1	2	3	4	5	6	7	8	9	10	11	12	13	14	15	16	17	18
0100	SEALED CASE																				
0104	CABLE (DETECTION ELECTRODE/P.C.B.)	571657		●																	
0105	PANEL (INSULATION - FRONT)	998133		●																	
0108	PANEL (INSULATION - SIDE)	998136		●																	
0110	ELECTRODE (IGNITION L.H.)	569561		●																	
0111	ELECTRODE (DETECTION)	573441		●																	
0113	MAIN EXCHANGER	573435		●																	
0116	CABLE (IGNITION ELECTRODE)	569558		●																	
0126	PANEL (INSULATION - REAR)	998148		●																	
0134	GASKET 3/4	573520		●																	
0137	ELECTRODE (IGNITION R.H.)	569560		●																	
0138	FLUE HOOD	573221		●																	
0149	BURNER JET WASHER	572138		●																	
0156	SPRING (FLUE CONTROL PROBE)	573349		●																	
0157	LOCK NUT (BRASS) 3/4	569446		●																	
0158	BURNER JET (L.P.G. 0.72)	570251	LG	●																	
	BURNER JET (NG 1.25)	570248	NG	●																	
0159	GASKET 37X26X2	569413		●																	
0163	FLUE CONTROL PROBE	995345		●																	
0190	SPRING (FASTENING)	570717		●																	
0193	PIPE (FLOW - MAIN EXCHANGER)	570585		●																	
0195	PIPE (RETURN - MAIN EXCHANGER)	570584		●																	
0197	SPARK GENERATOR	573023		●																	

200  
300  
400

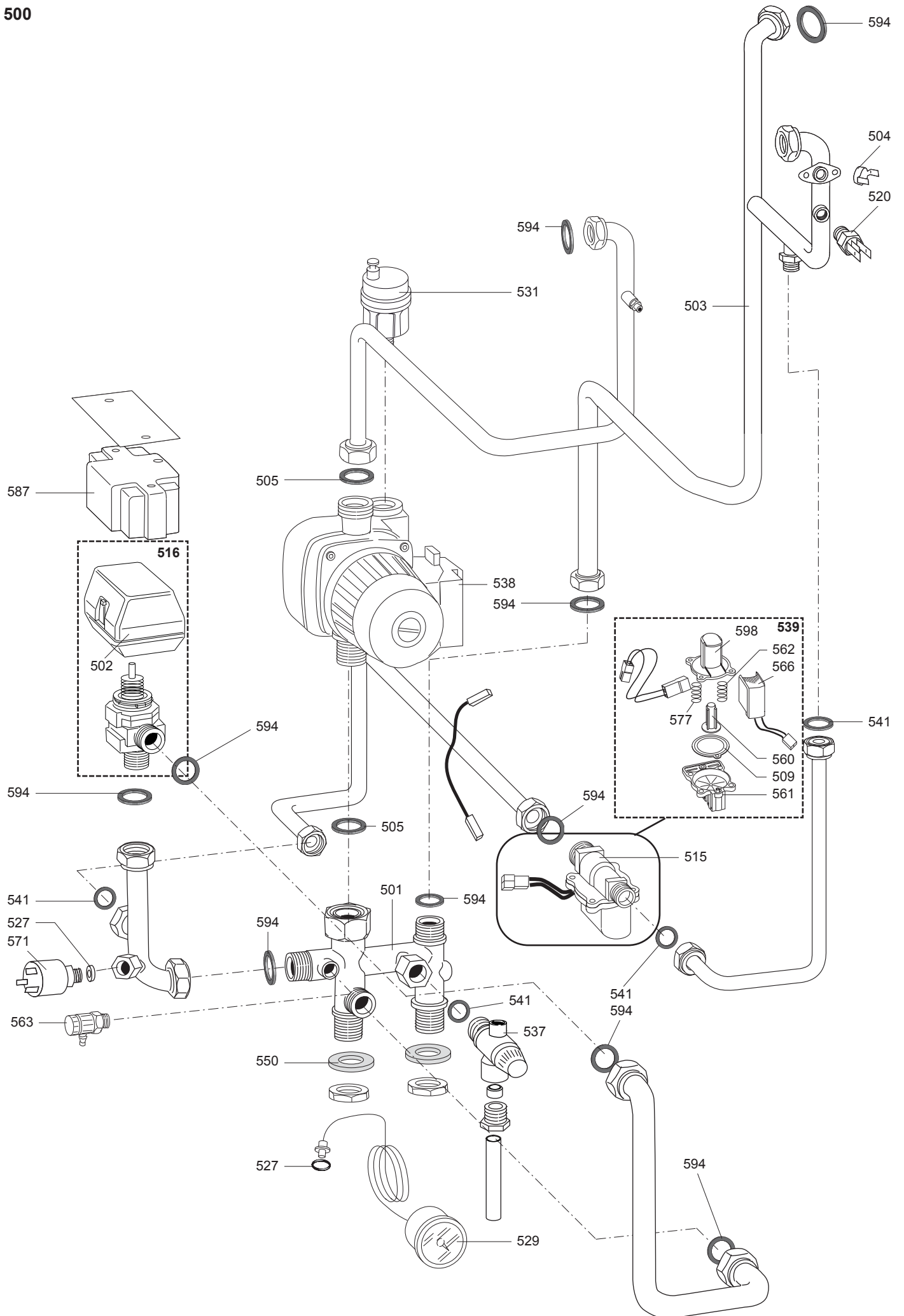
GENUS 27 BI/BFFI

Domestic Gas Boilers



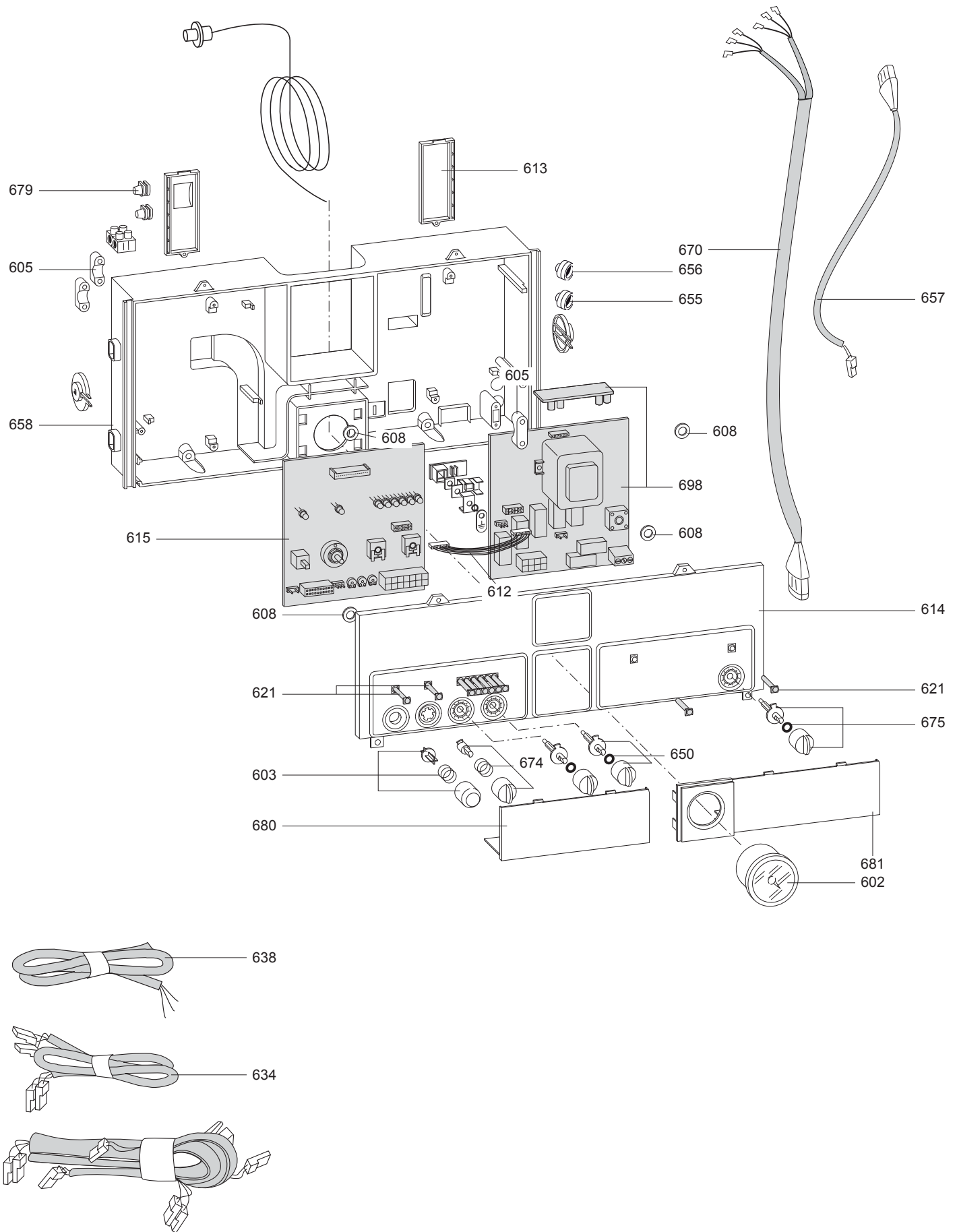


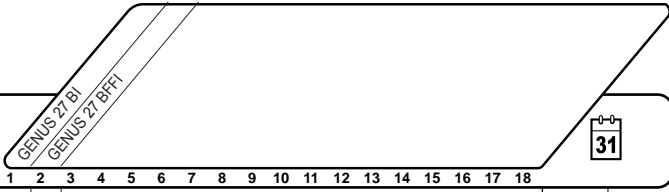
☉⇒	Description	Manf. Pt. N	Type	GENUS 27 BI / GENUS 27 BFFI																	
				1	2	3	4	5	6	7	8	9	10	11	12	13	14	15	16	17	18
<b>0200</b>	<b>FAN ASSEMBLY</b>																				
0201	SUPPORT PLATE	997203			•																
0206	FAN	573434			•																
0208	FAN SEAL (SILICONE)	573446			•																
0210	AIR INTAKE COVER	573329			•																
0212	SUPPORT PLATE (FAN)	573049			•																
0214	COMPENSATION TUBE	573576			•																
0215	SILICONE PIPE (NEGATIVE SIGNAL)	571819			•																
0216	AIR PRESSURE SWITCH 76 Pa	571652-01			•																
0218	COLLAR (VENTURI)	569434			•																
0219	VENTURI	572382			•																
<b>0300</b>	<b>CHASSIS-FRONT CASE</b>																				
0304	FLUE (COAXIAL TURRET)	571166			•																
0306	ON/OFF DOOR	571609			•																
0308	CABLE CLAMP	570561			•																
0309	SIGHT GLASS HOLDER	573566			•																
0310	SIGHT GLASS	573567			•																
0311	SPARK GENERATOR SUPPORT BRACKET	573493			•																
0312	SPARK GENERATOR	573023			•																
0315	CABLE HOLDER	570772			•	•															
0316	SIGHT GLASS - GASKET	569442			•																
0320	GASKET NEOPRENE D:126-95 (4 trous D:5)	573447			•																
0363	REGULATION DOOR	571608			•																
	REGULATION DOOR	572405			•																
0370	CONTROL PANEL BRACKET HOLDER (L/H)	573104			•	•															
0372	LOCK NUT (BRASS) 3/4	569446			•																
<b>0400</b>	<b>GAS SECTION</b>																				
0401	GAS VALVE (TANDEM)	573457			•	•															
0403	O-RING	571965			•	•															
0407	COMPENSATION TUBE	573576			•																
0409	GASKET (GAS VALVE)	569254			•	•															
0418	PIPE (GAS VALVE/BURNER)	573189			•	•															
0419	PIPE (GAS INLET)	573057			•	•															
0422	MODUREG COIL (SIT 24V GAS VALVE)	573740			•	•															
0423	GAS MODULATOR CARTRIDGE	573745			•	•															
0424	OPERATOR COILS (SIT TANDEM)	570712			•	•															
0444	GAS VALVE CABLE	999177			•	•															



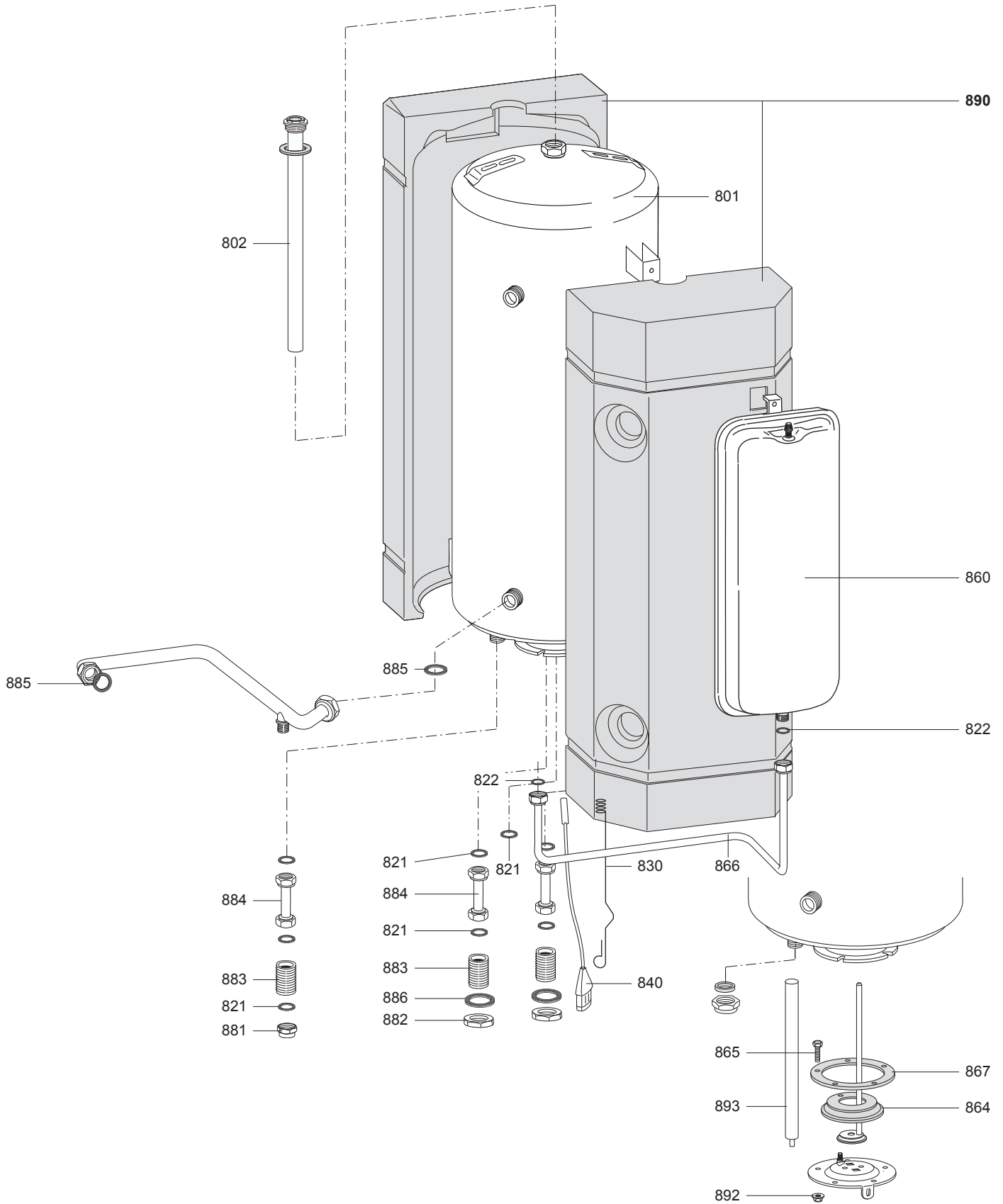




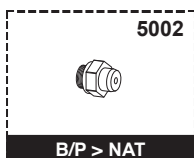
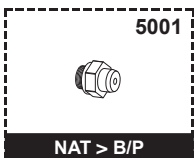


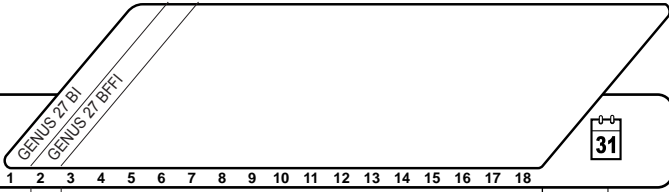


☉⇒	Description	Manf. Pt. N	Type	GENUS 27 BI / GENUS 21 BFFI																	
				1	2	3	4	5	6	7	8	9	10	11	12	13	14	15	16	17	18
0600	ELECTRICAL BOX																				
0602	PRESSURE GAUGE	571649		•	•																
0603	RESET BUTTON	571982		•	•																
0605	CABLE CLAMP	571562		•	•																
0608	NYLON BUSH (10MM)	569711		•	•																
0612	CABLE (P.C.B.)	952610		•	•																
0613	CABLE HOLDER COVER (R.H.)	571967		•	•																
0614	CONTROL PANEL COVER	572674		•	•																
0615	P.C.B. (EB C-MI/FFI)	953083		•	•																
0621	POWER INDICATOR L.E.D. LENS	571550		•	•																
0634	LOW VOLTAGE WIRING	998723		•	•																
0638	CABLE (POWER SUPPLY)	998012		•	•																
0650	CONTROL KNOB KIT	571984		•	•																
0655	CABLE HOLDER	569458		•	•																
0656	CABLE HOLDER	573534		•	•																
0657	CABLE (FLUE CONTROL PROBE)	573186		•																	
0670	CABLE (FAN/AIR PRESSURE SWITCH)	573193			•																
0674	SUMMER/WINTER SELECTOR KIT	571983		•	•																
0675	ON/OFF PUSH BUTTON KIT	571985		•	•																
0679	BLIND GROMMET	569720		•	•																
0680	INSPECTION COVER (L.H.)	571627		•	•																
0681	INSPECTION COVER (R.H.)	571623		•	•																
0698	PRINTED CIRCUIT BOARD (E A MI)	952910		•																	
	PRINTED CIRCUIT BOARD (EA FFI)	952930			•																



5000





☉⇒	Description	Manf. Pt. N	Type	GENUS 27 BI/BFFI																	
				1	2	3	4	5	6	7	8	9	10	11	12	13	14	15	16	17	18
<b>0800</b>	<b>HOT WATER TANK</b>																				
0801	D.H.W. CYLINDER 60 L	995467		•	•																
0802	ANODE (D.20,4 L:450)	469004		•	•																
0821	GASKET 1/2	573528		•	•																
0822	GASKET 3/8	573521		•	•																
0830	SPRING (D.H.W. PROBE)	990483		•	•																
0840	TEMPERATURE PROBE (D.H.W.)	573015		•	•																
0860	8 L. STANDARDISED EXPANSION VESSEL	65101718		•	•																
0864	98X37MM GASKET WITH HOLE	469068		•	•																
0865	SNUG SCREW	241506		•	•																
0866	PIPE (EXPANSION VESSEL C.H.)	570587		•	•																
0867	GASKET WITH 8X23 SCREW	990020		•	•																
0881	1/2 BRASS CAP	570571		•	•																
0882	LOCK NUT 1/2	573530		•	•																
0883	NIPPLE (1/2 BRASS)	573531		•	•																
0884	PIPE (SECONDARY RETURN)	573187		•	•																
0885	GASKET 3/4	573520		•	•																
0886	GASKET (30X22X2)	569415		•	•																
0890	POLYURETHANE SHELL (KIT)	65102081		•	•																
0892	NUT M8	570127		•	•																
0893	ANODE (D.21 L:350 M6)	469001		•	•																
<b>5000</b>	<b>ACCESSORIES</b>																				
5001	BURNER JET FULL KIT (LPG)	569282	LG	•	•																
5002	BURNER JET FULL KIT (NG)	573237	NG	•	•																

## LIST OF THE ABBREVIATIONS

HW .....	: Hot water.
CW .....	: Cold water.
C .....	: Ceramic resistance (normal heating).
Ca .....	: Ceramic resistance (accelerated heating)
TP .....	: Immersion heater.
1F .....	: With fittings.
2F .....	: Without fittings.
3F .....	: With fittings and another outlet connection.
AMI .....	: With mixing valve.
SMI .....	: Without mixing valve.
PUISS .....	: Power of th appliance.
PN .....	: Appliance with normal pression.
LP .....	: Appliance with low pression.
PV .....	: Appliance with variable power.
PF .....	: Appliance with fixed power.

## IDENTIFICATION PLATE

### SERIAL NUMBER

<b>10 Characters :</b>	04 05 125 011	Sequential number Manufacturing day Year of manufacture
<b>11 Characters :</b>	1 95 065004 - 31	Technical number of the appliance Sequential number Year of manufacture
Month of manufacture : from 1 to 9 → Jan. to Sep., O → Oct., N → Nov., D → Dec.		
<b>19 Characters :</b>	08 05 0013199 900640031	Product reference Sequential number
Year of manufacture Month of manufacture		
<b>20 Characters :</b>	3675007 XX 2 07 070 00315	Sequential number Manufacturing day Year of manufacture
Product reference Millenium of manufacture		
<b>21 Characters :</b>	3675007 XX 07 070 0000315	Sequential number Manufacturing day
Product reference Year of manufacture		

The indications mentioned on the prices, commercial or technical literature and the scheme are written for your guidance and are available at a given time. The CONSTRUCTOR retains the power to modify the presentation, the form, the size, the conception or the material of the products.