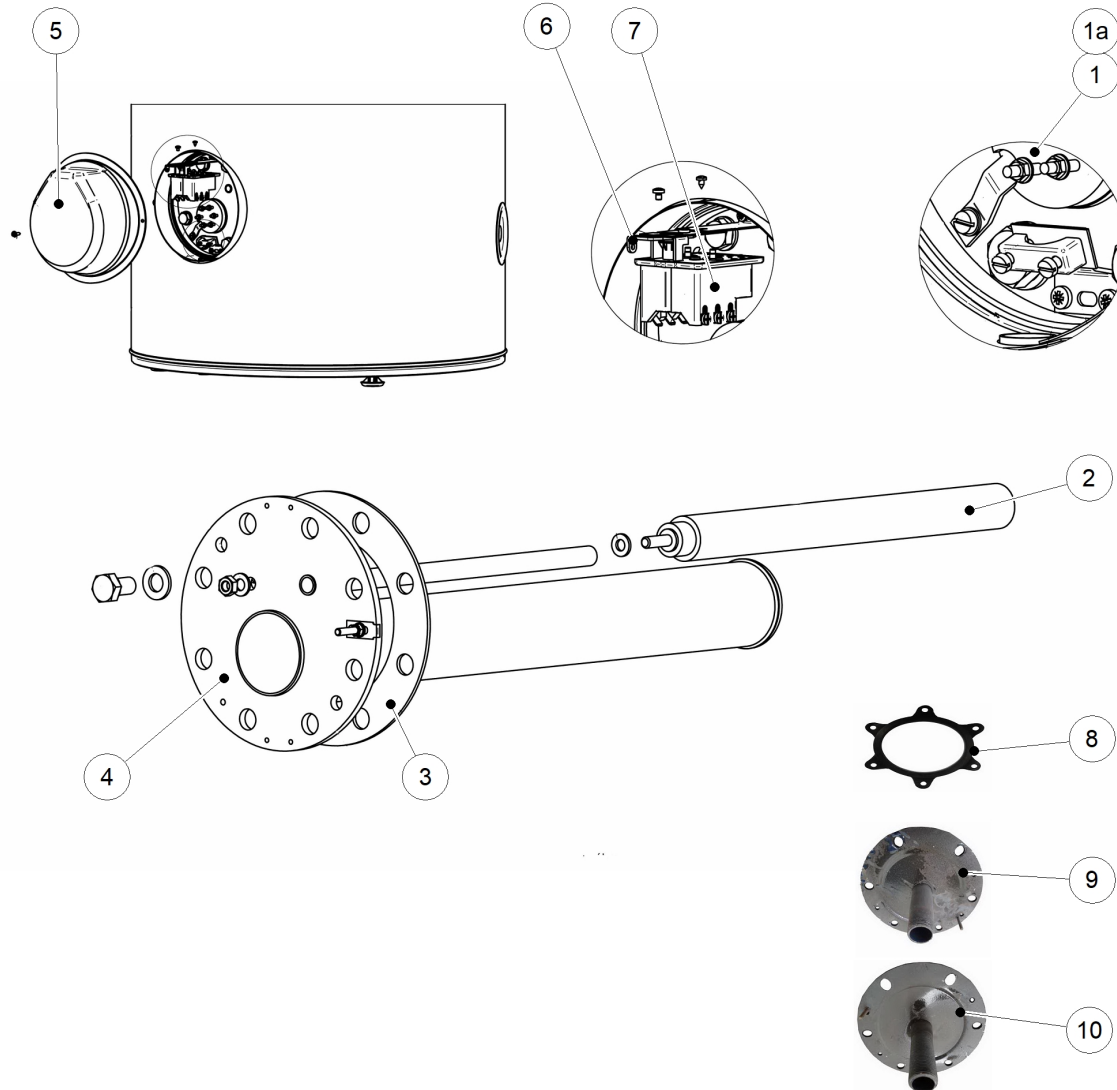










Glass ST-S Tri (floor) V17





Glass ST-S Tri (floor) V17

Code	Code GA	Quant.	Photo	Description	De --- A ---	Remarque
1a	90041730	785372	1	 Resist.chauff.ST 3200W tri	01-05-18-	300 Lit
1	A1005381	590058	1	Resist.chauff.ST 2400W tri Glass ERP	01-05-18-	150-200 Lit
2	90021033	785358	1	 Anode (32x270)+joint Glass150-200-300	01-05-18-	
3	90044502	785374	1	 Joint de bride montage socle Glass	01-05-18-	
4	A1005382	787447	1	Bride ST sol Glass ERP	01-05-18-	not compatible prev.version
5	A1005379		1	Capot BL-ST vertical blanc Glass ERP	01-05-18-	not compatible prev.version
6	A1005380		1	Support T-stat BTS Glass ERP	01-05-18-	
7	90057626	785379	1	 T-stat (tri) BTS5005 Glass	01-05-18-	
8	90027044	785360	1	 Joint de bride emboutie Glass	01-05-18-	
9	90009007	785347	1	 Tuyau/bride dép.ECS Glass 150-200S	01-05-18-	
10	90009010	785348	1	 Tuyau/bride dép.ECS Glass 300 S	01-05-18-	
	A1006353	780152	1	 Barre de liaison étoile électrique (tri)	07-08-20-	