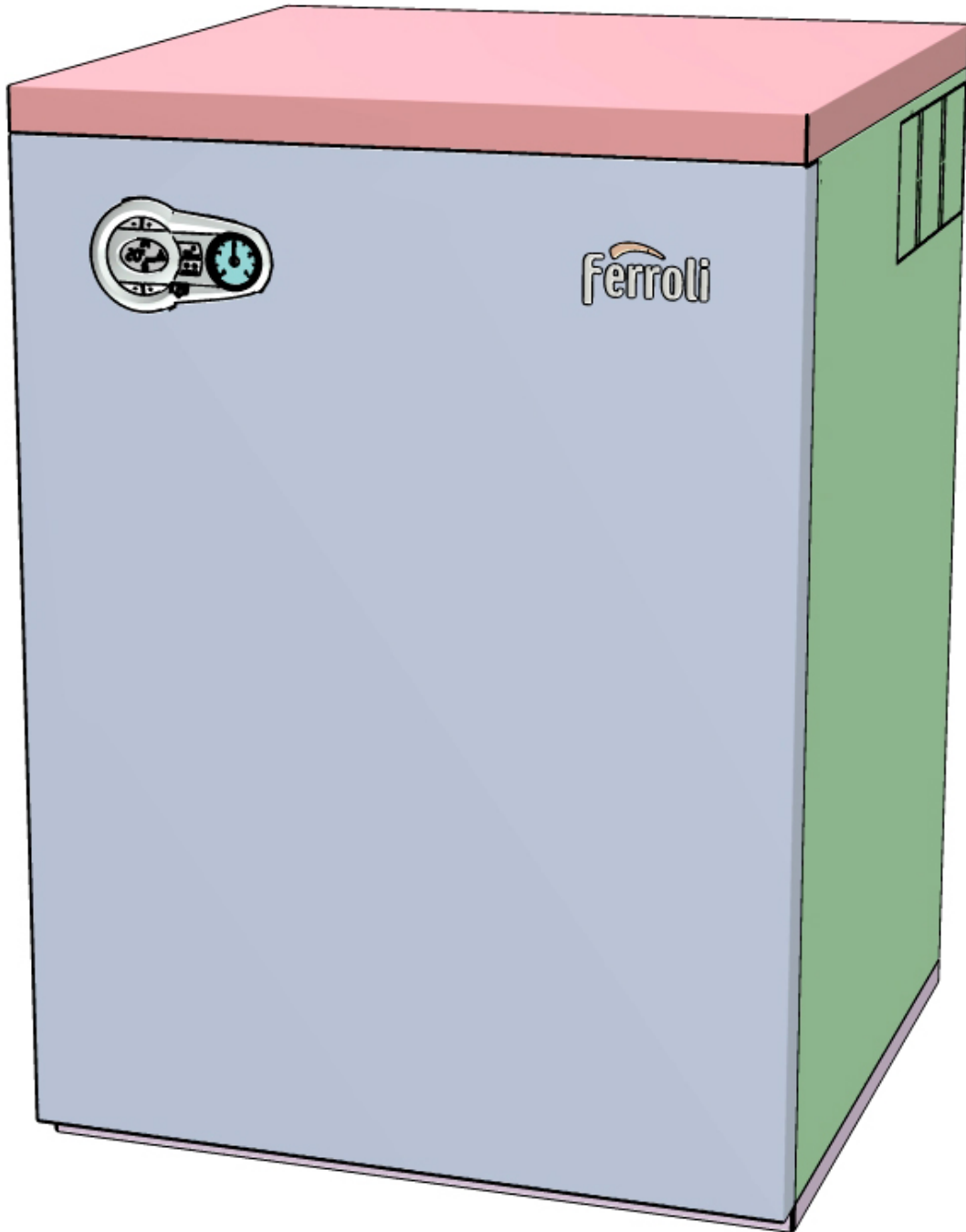




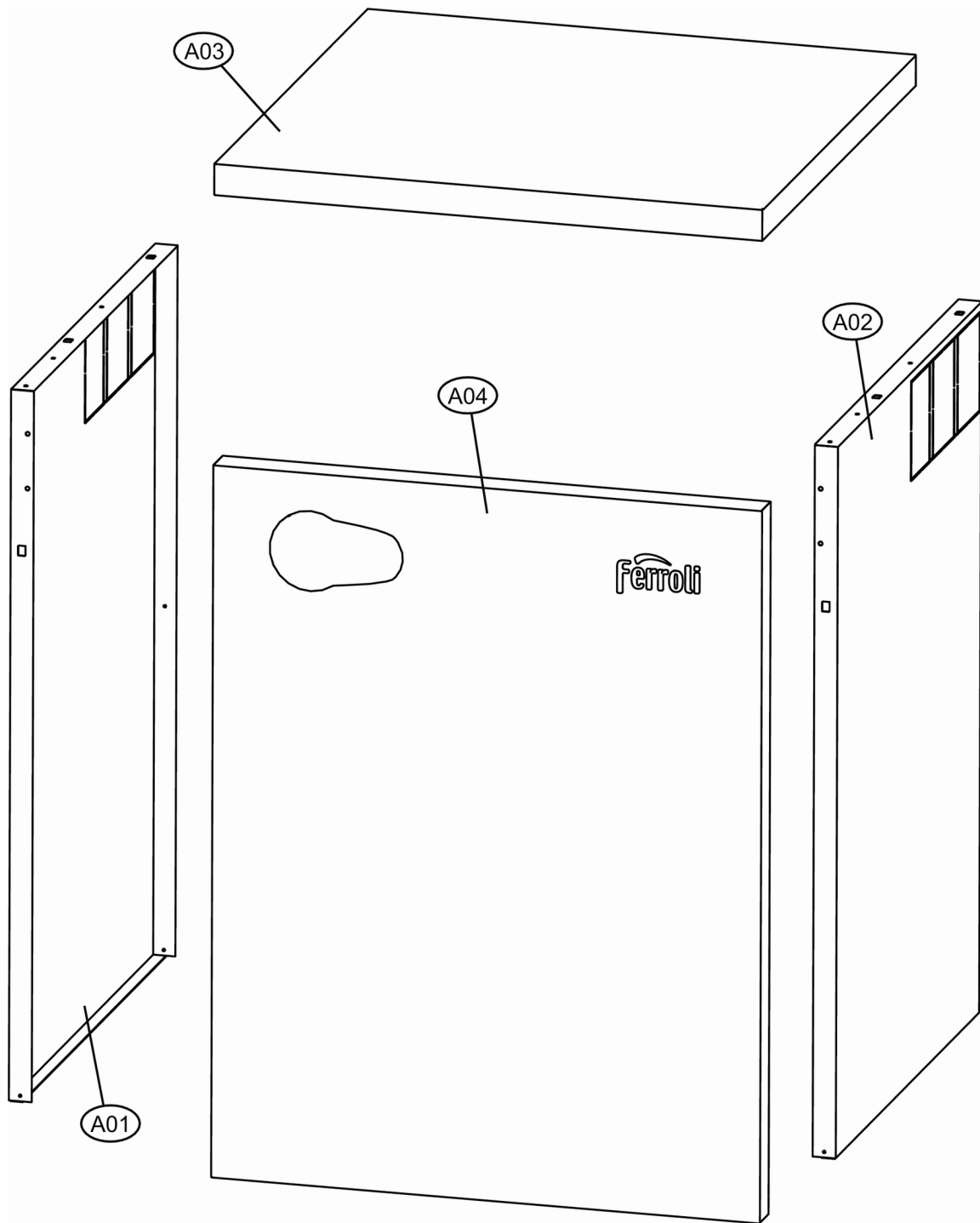
Lista Pezzi / Spare Parts / Ersatzsteile
List Onderdelen / Liste Pieces Detaches / Lista Piezas De Repuesto

BLUEHELIX B 32 K 50

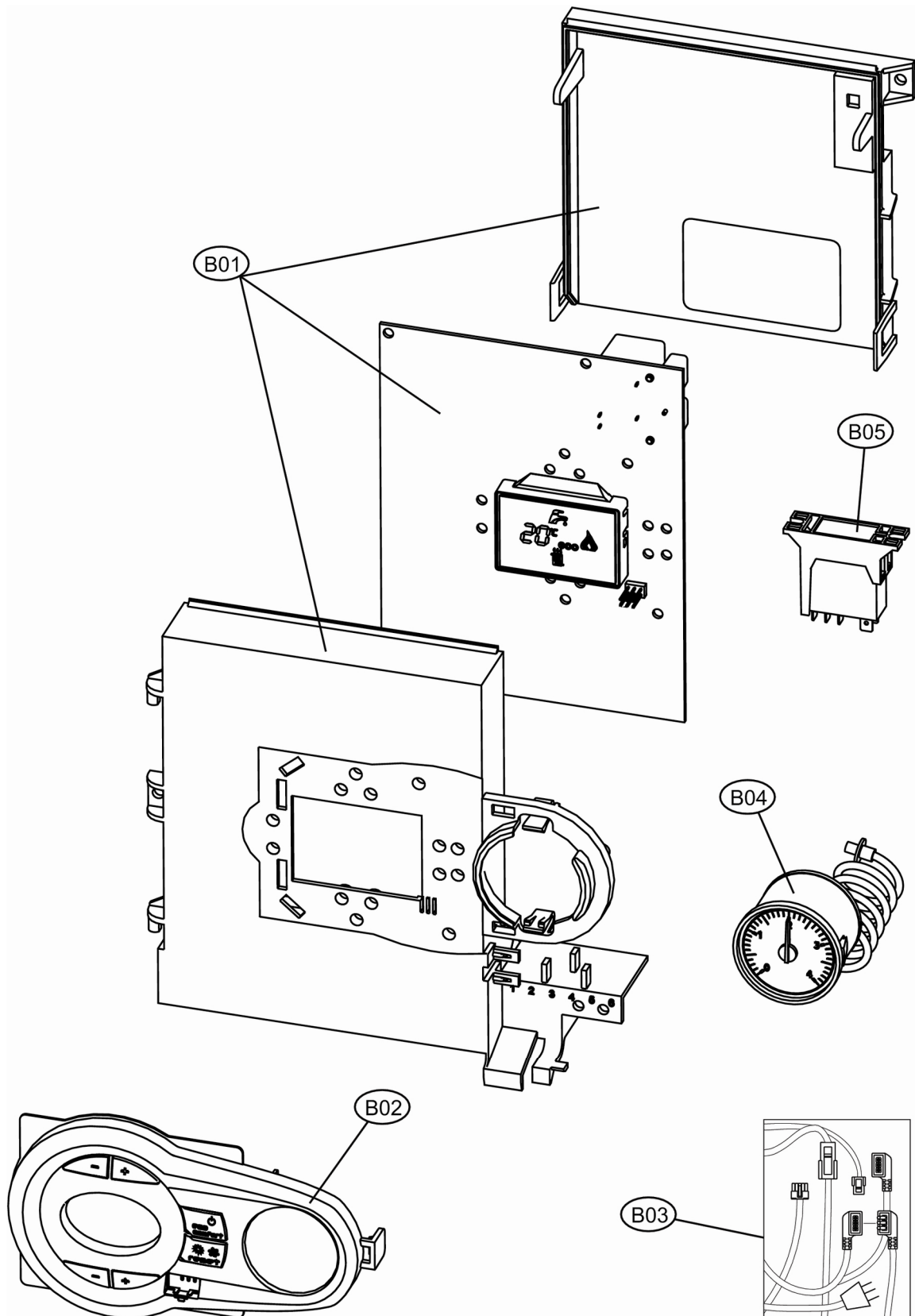


CODICE	EDIZIONE	MERCATO
30K1220000	01/02/2014	WN

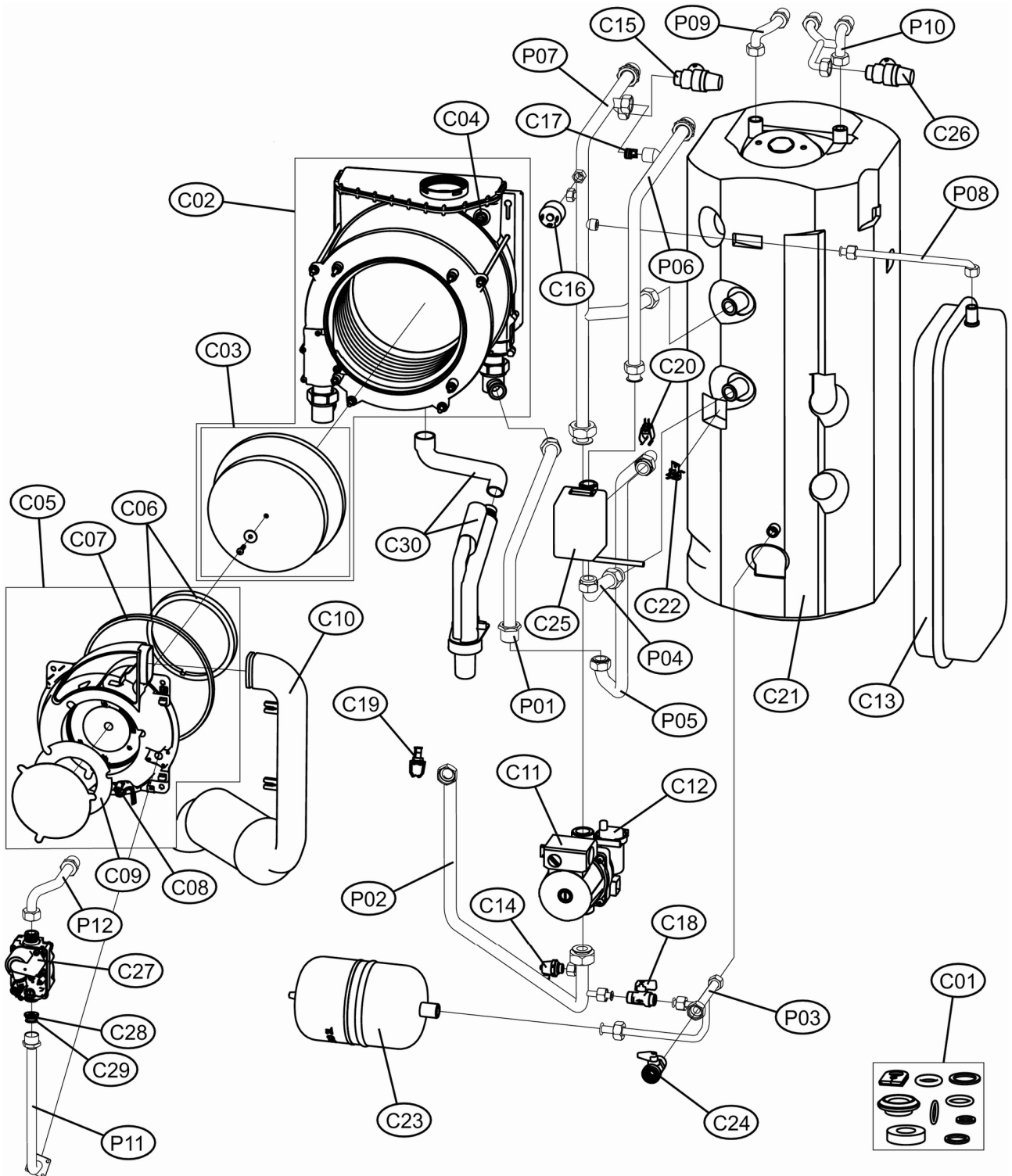
BLUEHELIX B 32 K 50



BLUEHELIX B 32 K 50



BLUEHELIX B 32 K 50



BLUEHELIX B 32 K 50

LISTA PEZZI

POS.	CODICE	DESC.	QT.
A01	39848770	KIT FIANCO SX Fm.TA (3110S351)	1.000
A02	39848780	KIT FIANCO DX Fm.TA (3110S371)	1.000
A03	39848800	KIT PORTA Fm.TA (3110S310)	1.000
A04	39848790	KIT COPERCHIO Fm.TA (3110S330)	1.000
B01	39845841	KIT CENTRAL.ABM03A (38326221)	1.000
B02	39846490	KIT MASCH.ABM03 9007(35015400)	1.000
B03	3980A760	KIT CAVI CABL. (38327130)	1.000
B04	39806330	KIT IDROMETRO (36400190)	1.000
B05	39843330	KIT SCHEDA CAR.H2O (36509180)	1.000
C01	39848810	KIT GUARN.CALD. SR.TAS3	1.000
C02	39846940	KIT SCAMB.T.12.6 M. (37406010)	1.000
C03	39845900	KIT ISOL.CENTR.+MATERAS.FM.T1	1.000
C04	39845890	KIT SONDA TEMP.FUMI (36200831)	1.000
C05	39846061	KIT BRUC-VENT-SILENZ. 0470304	1.000
C06	39846080	KIT GUARNIZIONI BRUC.SIT FM.T1	1.000
C07	39847430	KIT GUARN.B.GRAPH. (35015450)	1.000
C08	39846091	KIT GRUPPO ELETT.BRUC.SIT R1K	1.000
C09	39846100	KIT SCHEDA VENT. (36509230)	1.000
C10	39846110	KIT SILENZ.BRUC.T1 (35015170)	1.000
C11	3980A510	KIT POMPA RSL15/6 (36602380)	1.000
C12	39818220	KIT V.ARIA (39404380-39404730)	1.000
C13	39843440	KIT VASO ESP.10LT.AT(36803460)	1.000
C14	39810320	KIT RUBIN.SCARICO (36901630)	1.000
C15	39800130	KIT VALV.SIC.MF1/2" (36900660)	1.000
C16	39806180	KIT PRESSOSTATO H2O (36401930)	1.000
C17	39818790	KIT 10 VALV.N/R. (36902190)	1.000
C18	39808980	KIT RUB.3/8" Tp.5014(36901470)	1.000
C19	39819550	KIT SONDA TEMP. (36200730)	1.000
C20	39810220	KIT SONDA TEMP.RISC.(36200540)	1.000
C21	3980A770	KIT BOILER 50Lt. (37705020)	1.000
C22	39808560	KIT SONDA BOILER (36200560)	1.000
C23	39818200	KIT VASO ESP.2Lt. (36803250)	1.000
C24	39809010	KIT RUBIN.1/2" (36900700)	1.000
C25	39810940	KIT VALV.3V.3/4"M. (36900451)	1.000
C26	39809950	KIT VALV.SIC.9bar (36900460)	1.000
C27	39846140	KIT VALV.GAS VK8205V(36803320)	1.000
C28	39846150	KIT 5 DIAFR.GAS D5.0(34015650)	1.000
C29	39846900	KIT 5 DIAFR.GAS D3.8(34015890)	1.000
C30	39847570	KIT SIFONE Fm.T1 (35104750)	1.000
P01	3841H690	TUBAZ.RIT.SCAMB.SR.TAS3	1.000
P02	3841H670	TUBAZ.MAND.IMP-POMPA.SR.TAS3	1.000
P03	3841H700	TUBAZ.CARICO-SCARICO SR.TAS3	1.000
P04	3841H660	TUBAZ.RIT.IMP-BOLL.SR.TAS3	1.000
P05	3841H720	TUBAZ.RIT.SCAMB.-V.DEV.SR.TAS3	1.000
P06	3841H650	TUBAZ.RIT.IMP.SR.TAS3	1.000
P07	3841H680	TUBAZ.MAND.IMP-BOLL.SR.TAS3	1.000
P08	3841H710	TUBAZ.COLL.VASO IMP.SR.TAS3	1.000
P09	3841I210	TUBAZ.USCITA SANIT.SR.TAS3	1.000
P10	3841I220	TUBAZ.INGR.SANIT.+ RIC.SR.TAS3	1.000
P11	3841H730	TUBAZ.GAS VALV-BRUC.SR.TAS3	1.000
P12	3841I200	TUBAZ.ENTR.GAS SR.TAS3	1.000