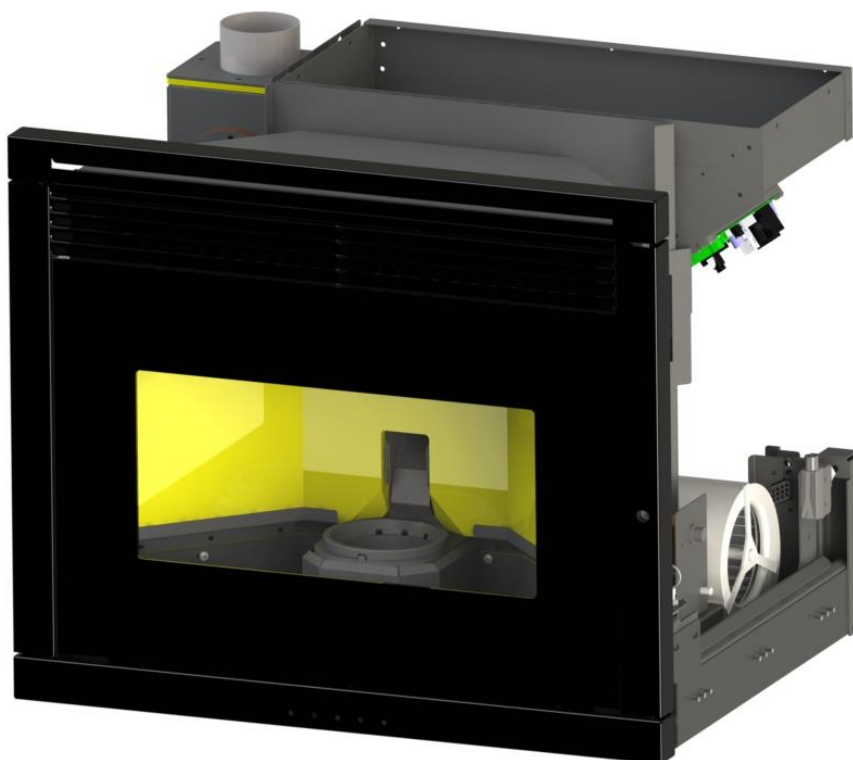


# FENICE 70 LL13A00A00 Vers.00



<b>Codice Prodotto-Vers.</b>	<b>Data Validità</b>	<b>Mercato</b>
<b>LL13A00A00</b>	<b>01/06/2013</b>	<b>WS</b>

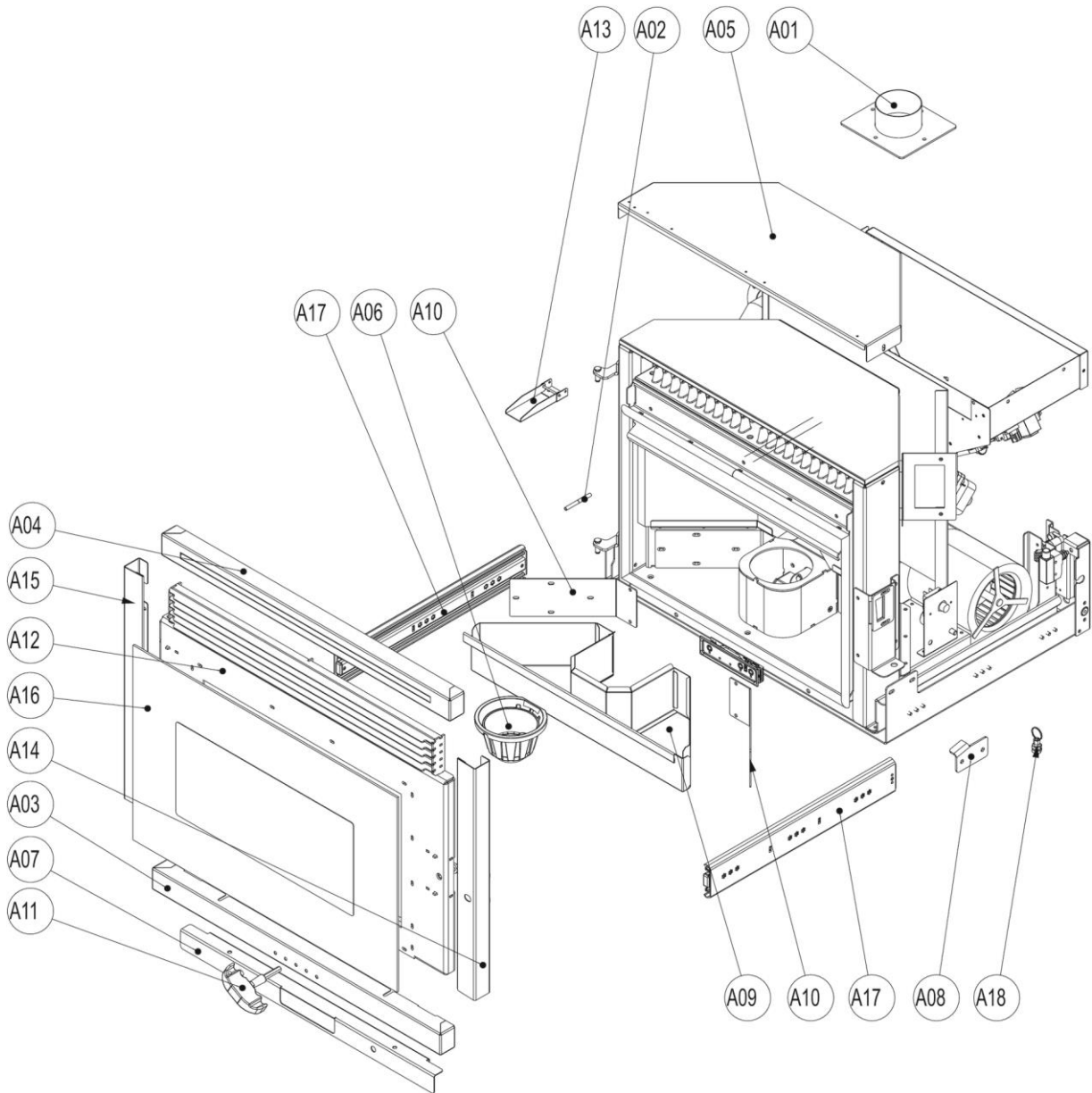
La ditta si riserva di apportare in qualsiasi momento, senza preavviso alcuno, eventuali modifiche tecniche od estetiche ai prodotti.  
 U.T. COLA - Diritti riservati - Riproduzione vietata



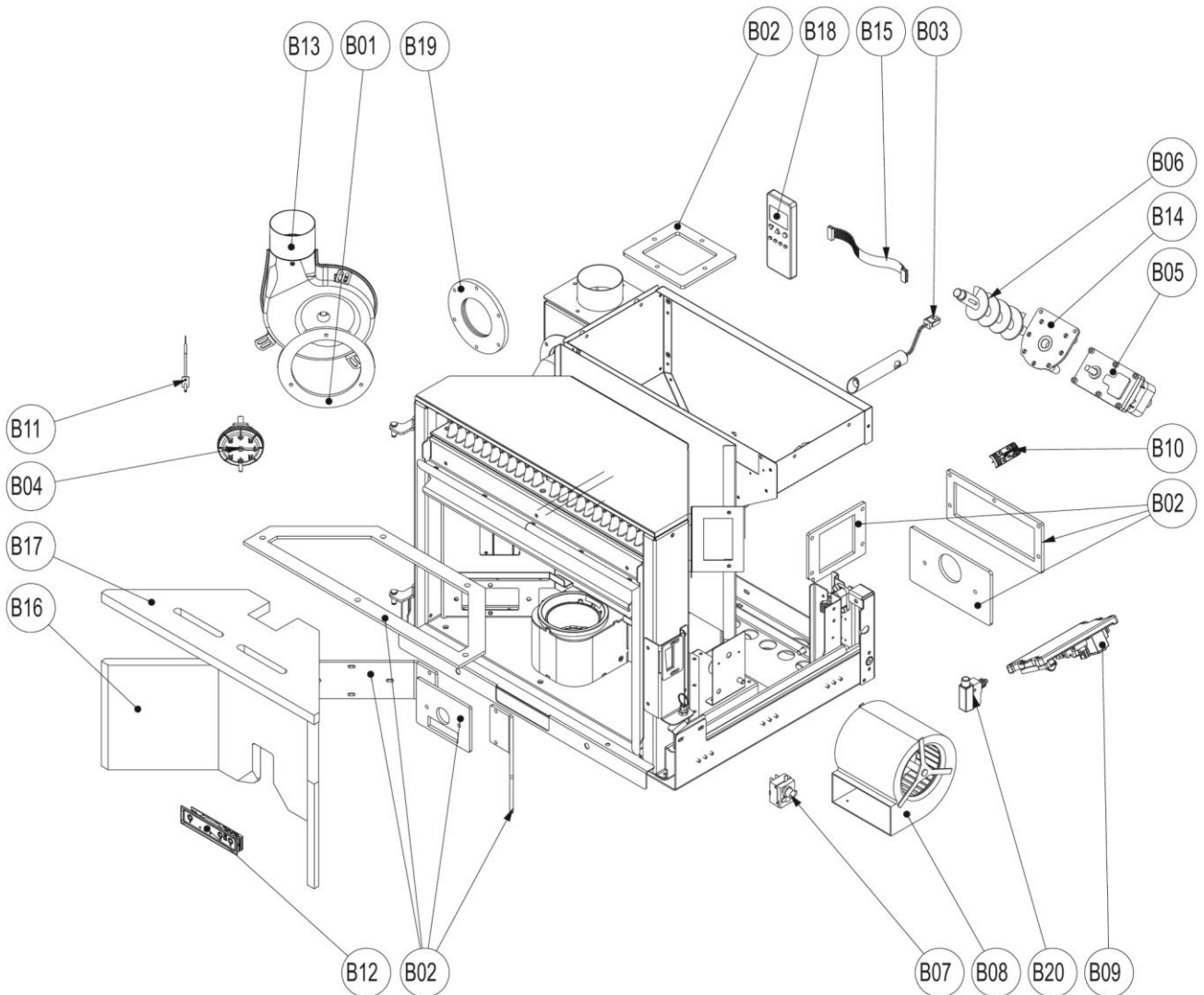
**COLA s.r.l.** - Viale del Lavoro 7/9 - 37040 Arcole (VR) Italy - Tel. 045.7635780 - 045.6144043  
 Cod. Fisc. - P.IVA e Iscr. Reg. Impr. 02990180230 - Capitale Sociale Euro 52.000,00 i.v. R.E.A. VR-301021 - Socio Unico  
 Fax Amministrazione 045.6100317 - Fax Commerciale 045.7639032 - Fax Assistenza 045.7639030 - Fax Logistica 045.6144048  
 email: info@anselmocola.com - on line: www.colastufe.com

"direzione e coordinamento della Ferrolì spa"

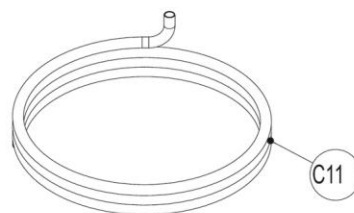
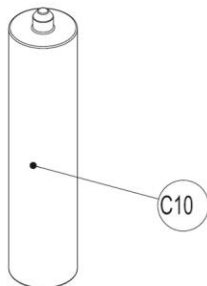
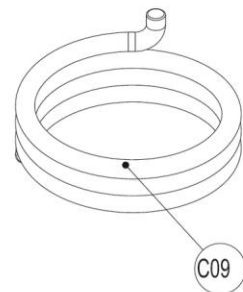
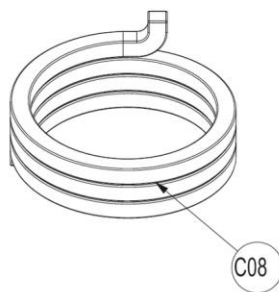
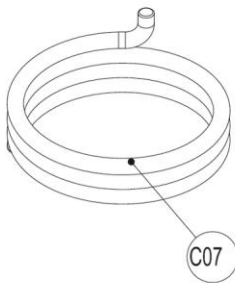
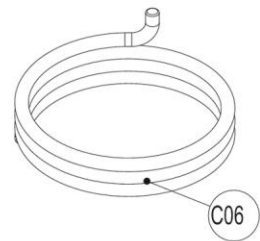
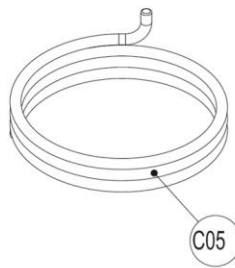
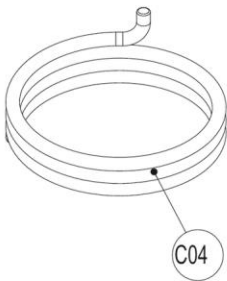
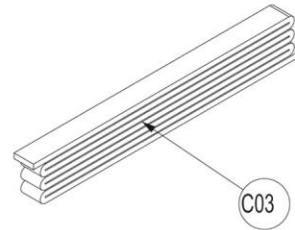
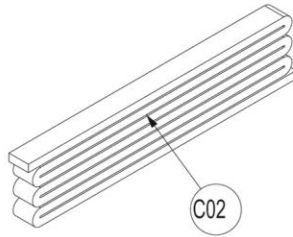
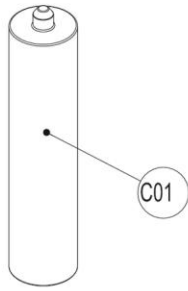
# FENICE 70 LL13A00A00 Vers.00



# FENICE 70 LL13A00A00 Vers.00



# FENICE 70 LL13A00A00 Vers.00



## FENICE 70 LL13A00A00 Vers.00

### LISTA PEZZI LL13A90A INSERTO FENICE 70 NERO

<b>POS.</b>	<b>CODICE</b>	<b>DESC.</b>	<b>QT.</b>
A01	30620272091	COP.ESTR.FUMI FISSO SALD.INSERTO700 NERO	1
A02	306601660	TUBO PREL.ARIA VACUOST. BEAUTY	1
A03	30860595191	PANNELLO ANT.INF.INSERTO 700 NERO MT 1°	1
A04	30860596191	PAN.L.ANT.SUP. STD INSERTO700 1°NERO MT	1
A05	30980407091	LAM.CONT.STD PROTEZ.SUP. INSERTO NERO	1
A06	31100007171	BRACERE PELLETS PICC.G.M.A.SI.GLAMOUR 1°	1
A07	35260443195	STAF.SOST.DISPLAY INSERTO700 NERO2012 1°	1
A08	35260444095	STAFFA SERR.FINE CORSA INSERTO700 NERO	1
A09	36120050191	CASSETTO CEN.PUNTATO INSERTO 700 1° NERO	1
A10	37400016191	TAPPO ISP.DX/SX CAMERA INS.700 1° NERO	2
A11	599001700	GR.RIC.CHIAVE DI MANOVRA PORTA	1
A12	51510085091	GR.PORTA FUOCO INSERTO 700 NERO	1
A13	599001720	GR.RIC.VALVOLA SICUREZZA 5 KW	1
A14	37000077091	CORNICE DX PORTA FUOCO INSERTO700 A.TEMP	1
A15	37000078091	CORNICE SX PORTA FUOCO INSERTO700 A.TEMP	1
A16	599003710	GR.RIC. VETRO SERIG.CERAM.640X408X4 INS	1
A17	421721010	GUIDA LINEARE 3 ELEM. ROLLON LFS 70 450	2
A18	482080030	PISTONCINO POSIZ. ELESA COD.GN.717.AK.ST	1
B01	365200021	GUARNIZIONE CONVOGL.- CAMERA COMBUST. 1°	1
B02	365200860	GUARNIZIONI TOPFIRE 70	1
B03	599000251	GR.RICAMBI RESIST+TUBO '08 D16 466810242	1
B04	599000260	GR.RICAMBIO PRESSOSTATO ARIA 454064010	1
B05	599000370	GR.RIC. MOTORIDUTTORE 1,3 RPM 428002013	1
B06	599000450	GR.RIC.COCLEA MODIF.CANALE ALL 333600020	1
B07	599000630	GR RIC.TERMOSTATO SICUREZZA 454052015	1
B08	599000980	RIC.VENT.CENTR.EBM D2E120-AA01 453522050	1
B09	599001150	GR.RIC.SCHEDA MICRONOVA L023 470521040	1
B10	599001170	GR.RICAMBIO DEBIMETRO 466510010	1
B11	599001190	GR.RIC.SONDA FUMI MICR. L=1500 467010115	1
B12	599001610	RIC.PANN.CONSOLE COMANDI L026 473010170	1
B13	599001630	GR.RIC.ESTR.FUMI EBM+CONV.LAM. 453562001	1
B14	599001710	GR.RIC.FLANGIA FERMA MOTORIDUTTORE	1
B15	599001750	GR.RIC.CAVO FLAT PIATTO L=1700	1
B16	599003620	GR.RIC.KIT MANTELLO VERM. INSERTO 700	1
B17	599003630	GR.RIC.KIT DEVIAT. VERM. INSERTO 700	1
B18	599003640	GR.RIC.KIT TELECOM.MICRONOVA BID.+DISPL	1
B19	457701120	GUARNIZ.GR.ESTR.FUMI FISSO INSERTO 700	1
B20	599003720	GR.RIC.MICROINTER. INSERTO CAMINO	1
C03	599001900	GR.RIC. NASTRO BLACK TEX 8X2	1
C09	599001960	GR.RIC. TRECCIA ARTICA D=14 NERA	1
C10	599001970	GR.RIC. SILICONE TERMORESISTENTE NERO	1
C11	599001980	GR.RIC. TUBO SILICONE TRASP. D.EST 8	1