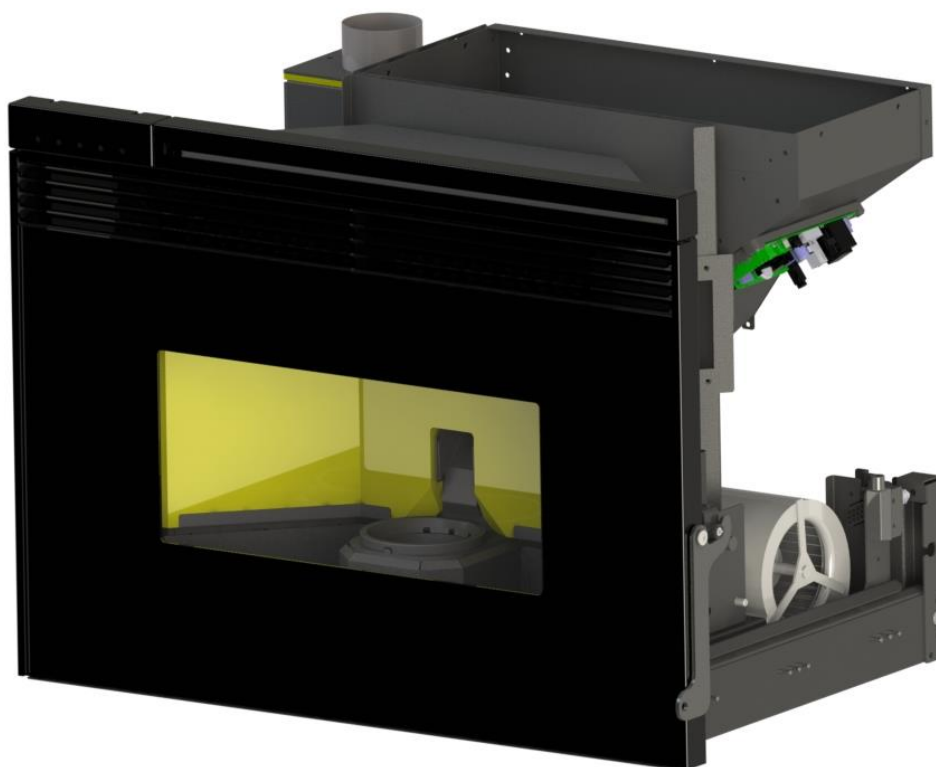


FENICE 80 LL13B00A00 Vers.00



La ditta si riserva di apportare in qualsiasi momento, senza preavviso alcuno, eventuali modifiche tecniche od estetiche ai prodotti.

Codice Prodotto-Vers.	Data Validità	Mercato
LL13B00A00	01/06/2013	WS

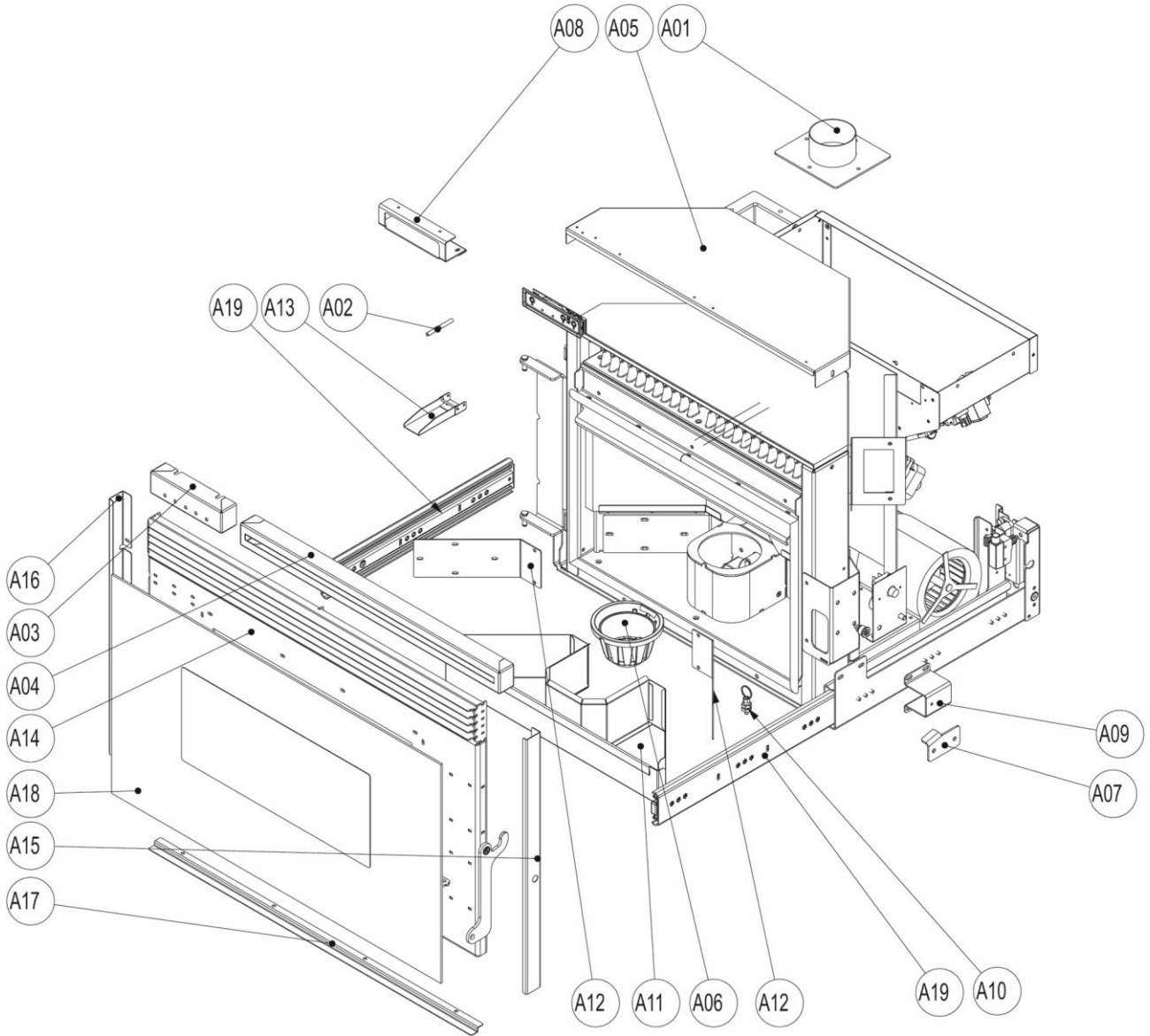
U.T. COLA - Diritti riservati - Riproduzione vietata



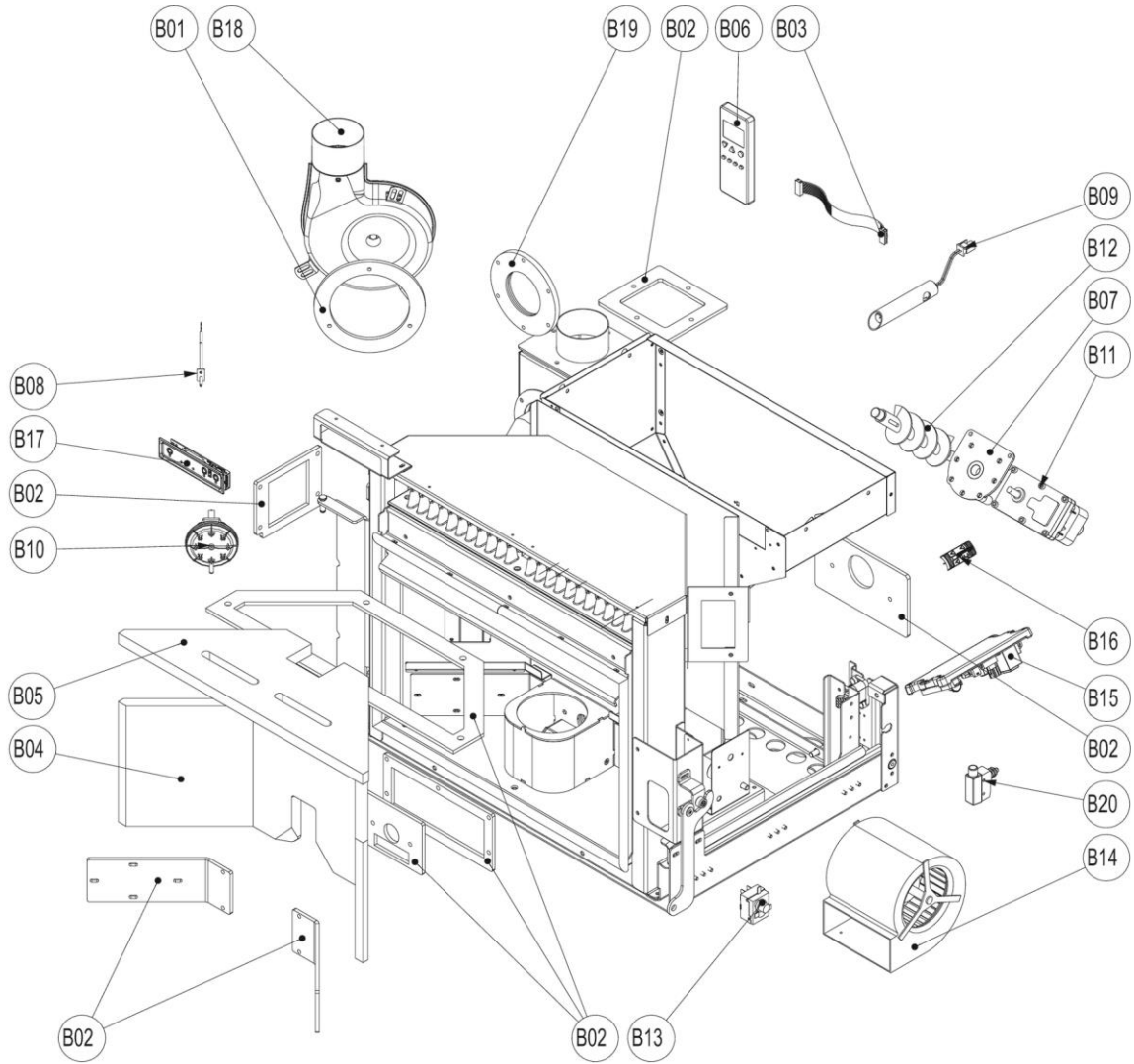
COLA s.r.l. - Viale del Lavoro 7/9 - 37040 Arcole (VR) Italy - Tel. 045.7635780 - 045.6144043
 Cod. Fisc. - P.IVA e Iscr. Reg. Impr. 02990180230 - Capitale Sociale Euro 52.000,00 i.v. R.E.A. VR-301021 - Socio Unico
 Fax Amministrazione 045.6100317 - Fax Commerciale 045.7639032 - Fax Assistenza 045.7639030 - Fax Logistica 045.6144048
 email: info@anselmocola.com - on line: www.colastufe.com

"direzione e coordinamento della Ferrolì spa"

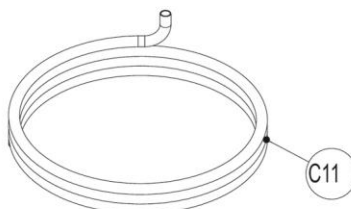
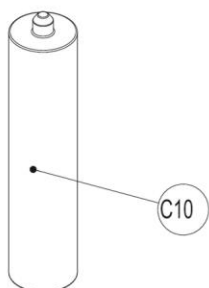
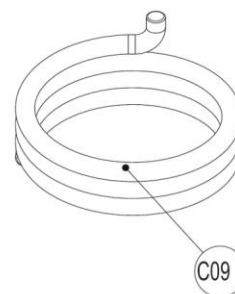
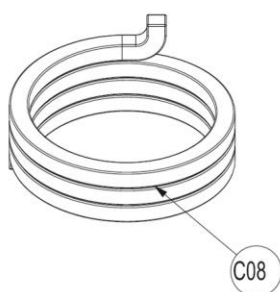
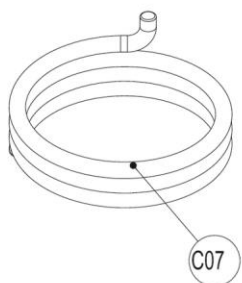
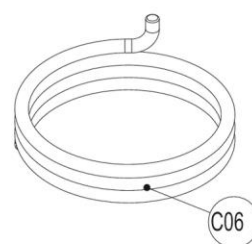
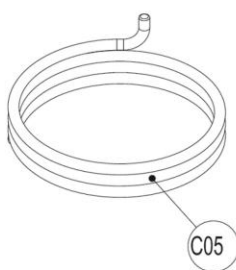
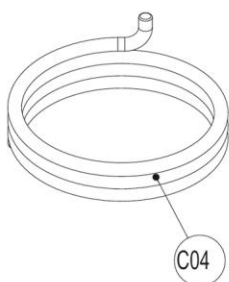
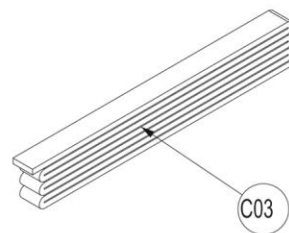
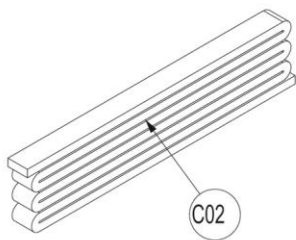
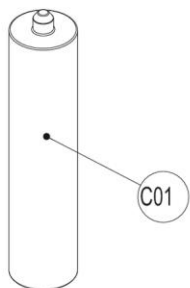
FENICE 80 LL13B00A00 Vers.00



FENICE 80 LL13B00A00 Vers.00



FENICE 80 LL13B00A00 Vers.00





FENICE 80 LL13B00A00 Vers.00

LISTA PEZZI LL13B90A INSERTO FENICE 80 NERO

POS.	CODICE	DESC.	QT.
A01	30620272091	COP.ESTR.FUMI FISSO SALD.NERO	1
A02	306601660	TUBO PREL.ARIA VACUOST.	1
A03	30860627091	PANN. ANT.SUP.SX STD NERO	1
A04	30860628091	PANN. ANT.SUP.STD NERO	1
A05	30980407091	LAM.CONT.STD PROTEZ.SUP. NERO	1
A06	31100007171	BRACERE PELLETS PICC.G.M.A.	1
A07	35260444095	STAFFA SERR.FINE CORSA NERO	1
A08	35260492095	STAF.SOST.DISPLAY NERO	1
A09	35260493091	STAFFA REGOL.BUSS. AGG. NERO	1
A09	352604931	ST. REGOL.BUSSOLA AGGANCIO 1°	1
A10	482080030	PISTONCINO POSIZIONE ELESA	1
A11	3612005191	CASSETTO CENERE PUNTATO	1
A12	37400016191	TAPPO ISP.DX/SX CAMERA NERO	2
A13	599001720	GR.RIC.VALVOLA SICUREZZA 5 KW	1
A14	51510093091	PORTA FUOCO NERO	1
A15	36640343091	PROF.LAT.DX P.FUOCO NERO	1
A16	36640344091	PROF.LAT.SX P.FUOCO NERO	1
A17	36640345091	PROFILO INF.P. FUOCO NERO	1
A18	599003680	VETRO SERIG.CERAM.794X457X4	1
A19	421721010	GUIDA LINEARE 3 ELEM. ROLLON	2
B01	365200021	GUARNIZIONE CONVOGL.- CAMERA C	1
B02	365200860	GUARNIZIONI	1
B03	599001750	GR.RIC.CAVO FLAT PIATTO L=1700	1
B04	599003620	MANTELLINO VERMIC. INSERTO 700	1
B05	599003630	DEVIAT. VERMIC. INSERTO 700	1
B06	599003640	TELECOM.MICRONOVA BIDIR.+DISP	1
B07	599001710	GR.RIC.FLANGIA FERMA MOTORID.	1
B08	599001190	GR.RIC.SONDA FUMI MICR. L=1500	1
B09	599000251	GR.RICAMBI RESIST+TUBO '08 D16	1
B10	599000260	GR.RICAMBIO PRESSOSTATO ARIA	1
B11	599000370	GR.RIC. MOTORIDUTTORE 1,3 RPM	1
B12	599000450	GR.RIC.COCLEA CANALE	1
B13	599000630	GR RIC.TERMOSTATO SICUREZZA	1
B14	599000980	VENT.CENTR.EBM D2E120-AA01-04	1
B15	599001150	GR.RIC.SCHEDA MICRONOVA L023	1
B16	599001170	GR.RICAMBIO DEBIMETRO	1
B17	599001610	RIC.PANN.CONSOLE COMANDI L026	1
B18	599001630	RIC.ESTR.FUMI EBM+CONV.LAMIERA	1
B19	457701120	GUARNIZ.GR.ESTR.FUMI FISSO	1
B20	599003720	MICROINTERRUTTORE	1
C03	599001900	NASTRO BLACK TEX ADESIVO 8X2	1
C09	599001960	TRECCIA ARTICA D=14 NERA	1
C10	599001970	SILICONE TERMORESISTENTE NERO	1
C11	599001980	TUBO SILIC. D.E. 8 - D.I 4,5	1